

TRAVERSE CLOSURE

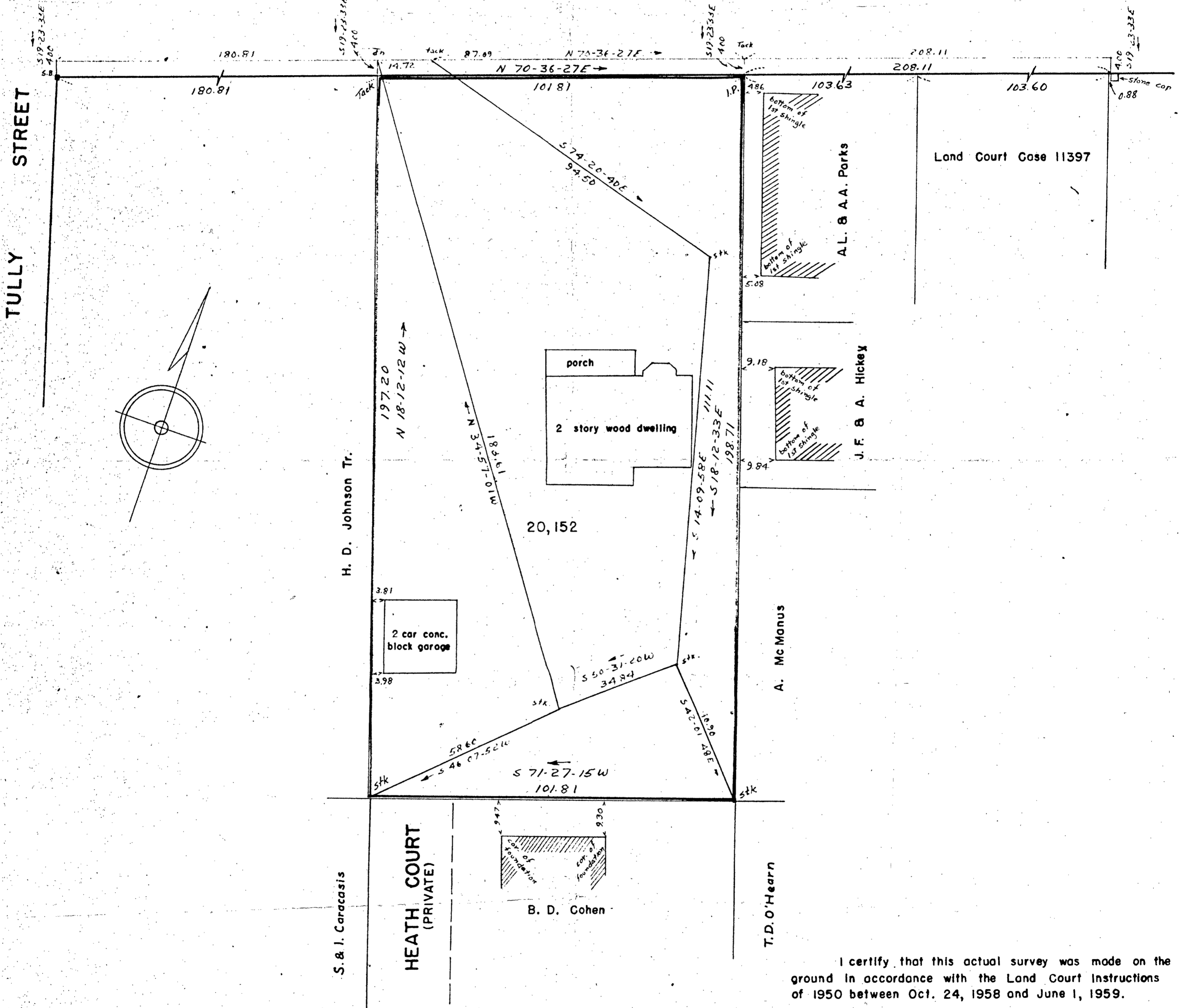
Dist.	Bearing	N	S	E	W
14.72	N 70-36-27E	4.89		13.89	
94.50	S 74-20-40E		25.50	90.99	
111.11	S 14-09-58E		107.73	27.19	
34.84	S 50-31-20W		22.15		26.89
183.61	N 34-57-01W	150.49			105.18
Totals		155.38		132.07	

LOT CLOSURE

Dist.	Bearing	N	S	E	W
101.81	N 70-36-27E	33.806		96.034	
198.71	S 18-12-33E		188.757	62.093	
101.81	S 71-27-15W		32.381		96.523
197.20	N 18-12-12W	187.332			61.604
Totals		221.138		158.127	

BOYLSTON (ROUTE 9) STREET

PUBLIC - STATE HIGHWAY - VARIABLE WIDTH



BROOKLINE PLANNING BOARD

Approval under the subdivision control law not required.

Date June 2, 1959
Walter D. Flinn
 Secretary & Engineer

PLAN OF LAND
 IN

BROOKLINE MASS.

I certify that this actual survey was made on the ground in accordance with the Land Court Instructions of 1950 between Oct. 24, 1958 and June 1, 1959.

Date June 2, 1959

John Regan
 Surveyor for Everett M. Brooks Co.
 259 Walnut St. Newtonville

SCALE 1 IN = 20 FT
 EVERETT M. BROOKS CO.
 NEWTONVILLE, WAYLAND AND ACTON

JUNE 3, 1959
 CIVIL ENGRS
 MASS.

