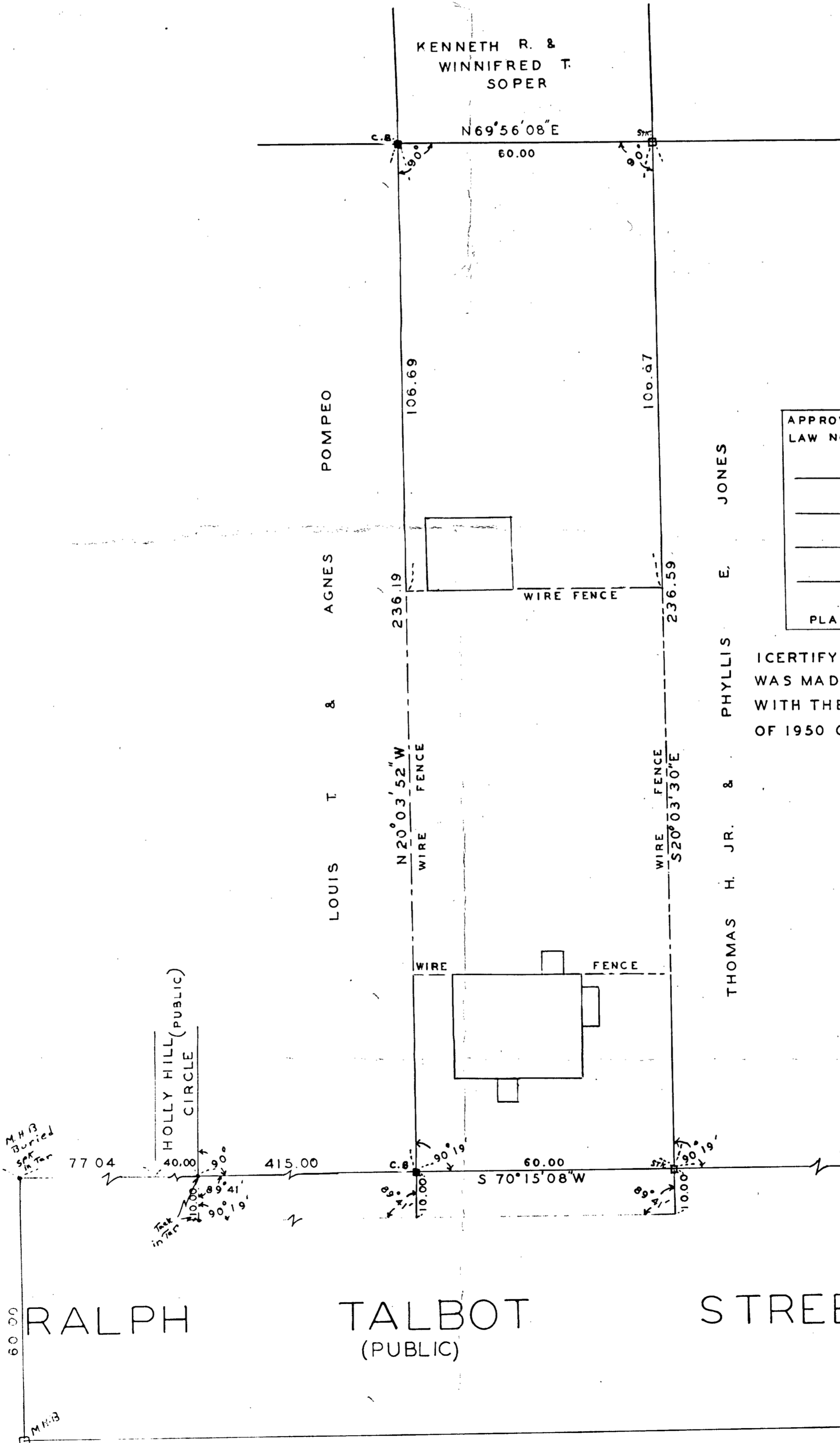
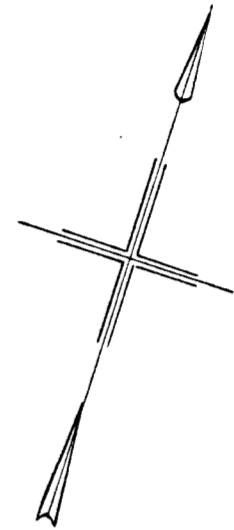
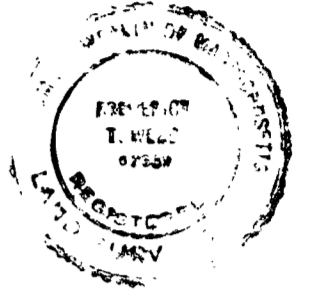


# PLAN OF LAND IN WEYMOUTH NORFOLK CO. MASS.

SCALE: 1" = 20'      MARCH 24, 1959.

THE SCHUYLER CLAPP COMPANY  
BRAintree, MASS.



APPROVAL UNDER THE SUBDIVISION CONTROL  
LAW NOT REQUIRED. \_\_\_\_\_, 1959

---



---



---

PLANNING BOARD : TOWN OF WEYMOUTH

JONES  
E.  
PHYLLIS  
&  
THOMAS H. JR.

I CERTIFY THAT THIS ACTUAL SURVEY  
WAS MADE ON THE GROUND IN ACCORDANCE  
WITH THE LAND COURT INSTRUCTIONS  
OF 1950 ON MARCH 1959.

*Frederick T. Welt*

4/6/59  
Approved by the Planning Board  
*[Signature]*

RALPH TALBOT STREET  
(PUBLIC)

M.H.B.

247.36

M.H.B. Buried

77.04

HOLLY HILL (PUBLIC)  
CIRCLE

415.00

60.00

S 70°15'08" W

100.00

194.52

M.H.B. M&T Found