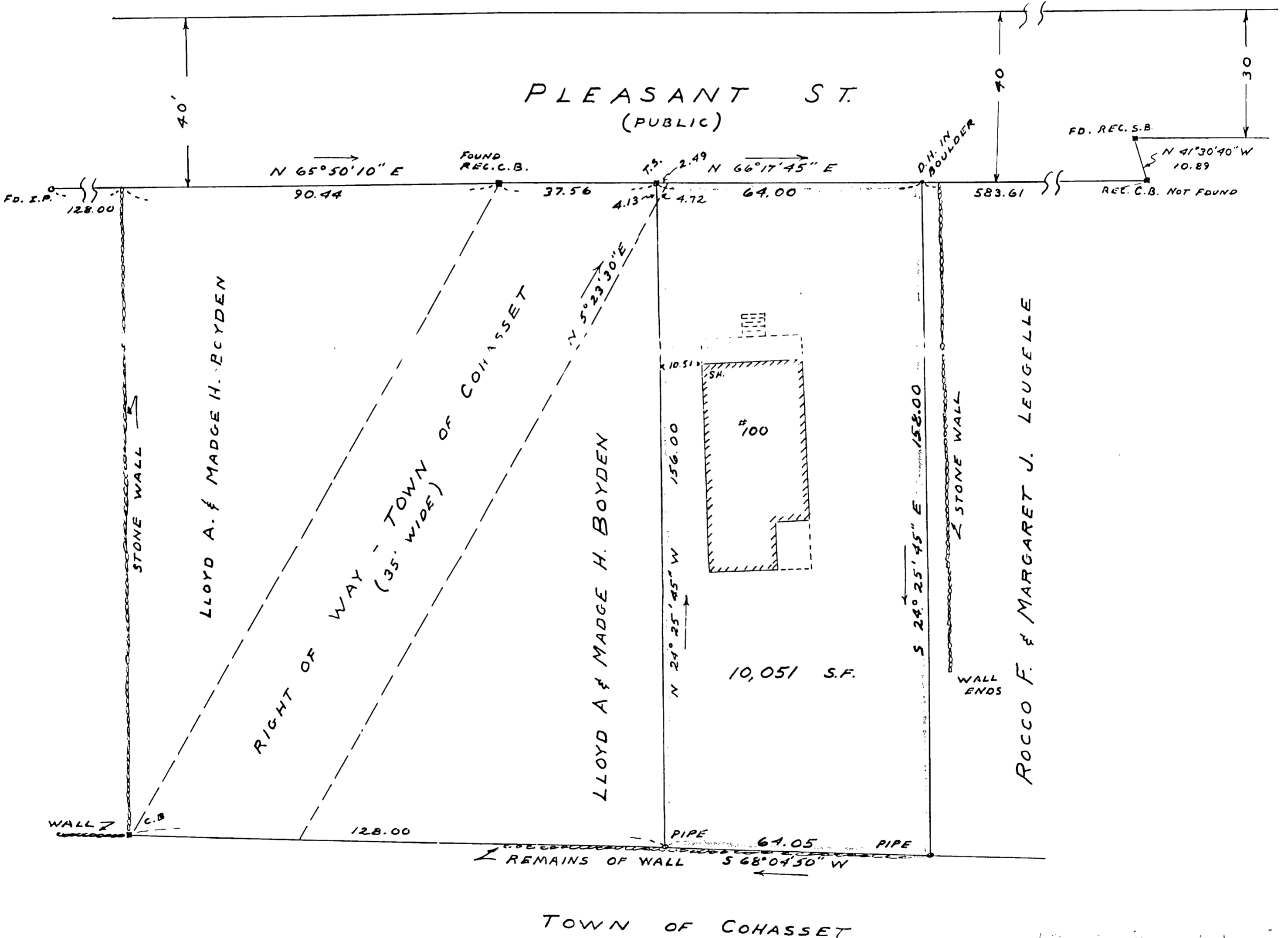
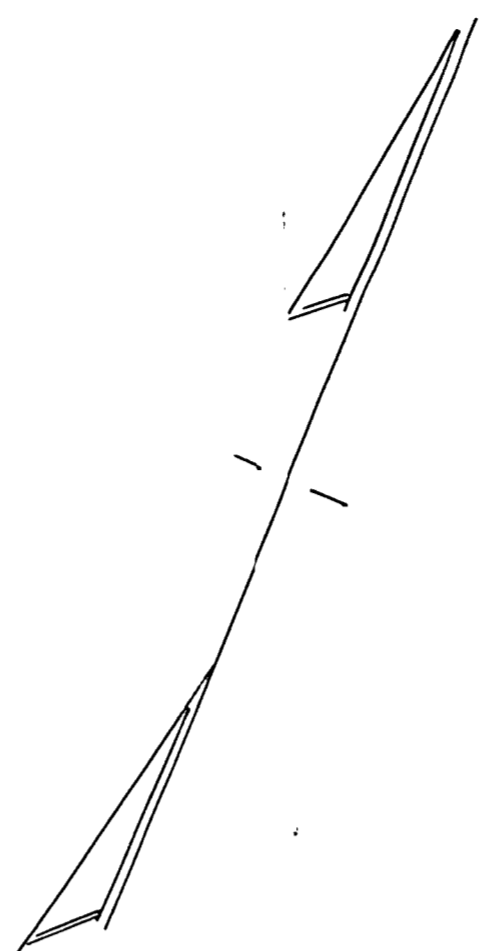
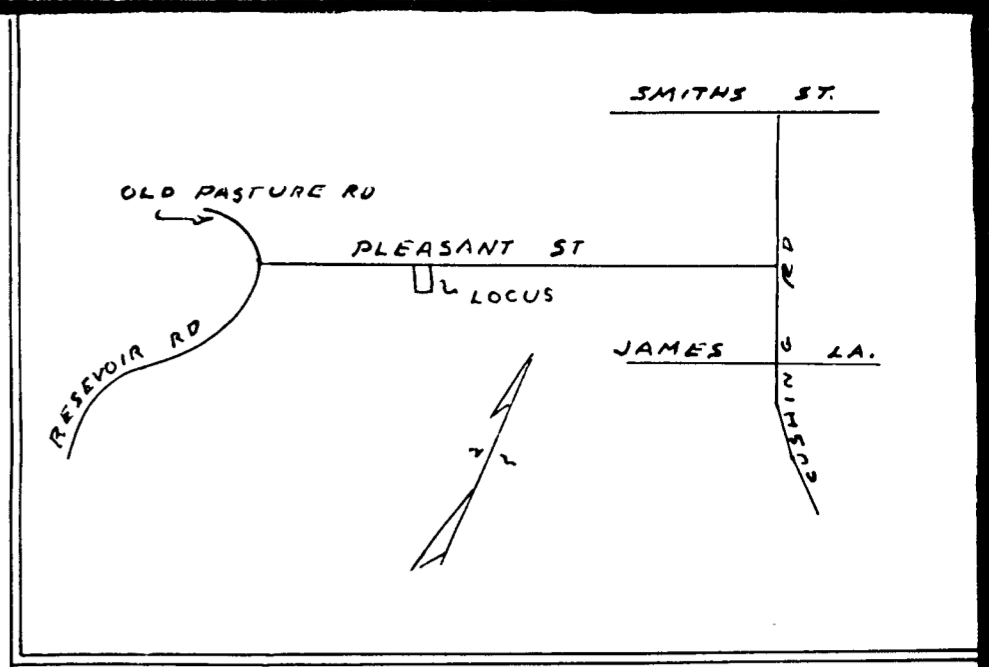


BEARING	DIST	N	S	E	W
N 66°17'45" E	64.00	25.73	-	58.60	-
S 24°25'45" E	156.00	-	143.85	65.34	-
S 68°04'50" W	64.05	-	23.91	-	59.42
N 24°25'45" W	156.00	142.03	-	-	64.52
		167.76	167.76	123.94	123.94

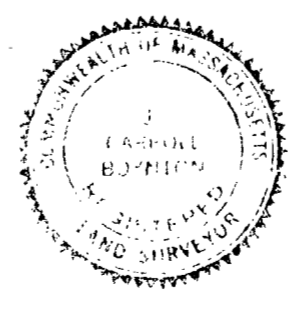


29052
 Cohasset
 P. 39
 4-17-59 WES

John A. Boynton
 Feb. 9, 1959

I CERTIFY THAT THIS ACTUAL SURVEY WAS MADE ON THE GROUND IN ACCORDANCE WITH THE LAND COURT INSTRUCTIONS OF 1950 ON JANUARY 28, 1959.

JANUARY 30, 1959 *J. S. Boynton*
 ENGINEER



LAND COURT
 PLAN OF LAND IN COHASSET
 BELONGING TO
 LLOYD A. & MADGE H. BOYDEN
 SCALE 1"=20'
 JAN 30, 1959
 HAYWARD-HAYWARD & BOYNTON ENGRS.
 68 MAIN ST. BROCKTON