

PLAN OF LAND

IN

AVON, MASS.

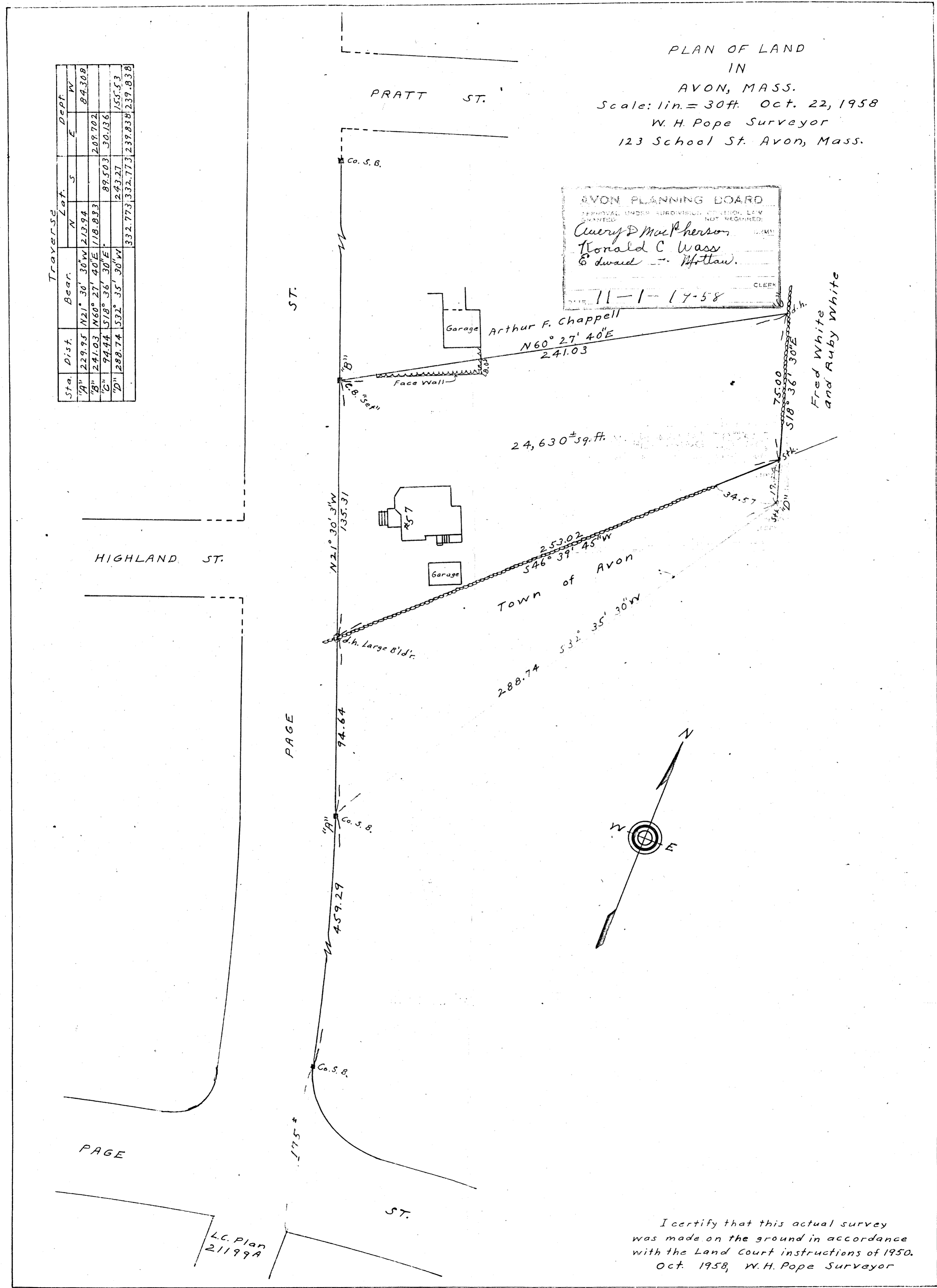
Scale: 1 in. = 30 ft. Oct. 22, 1958

W. H. Pope Surveyor

123 School St. Avon, Mass.

Traverse				
Sta.	Dist.	Bear.	N	Dept.
"A"	229.95	N21° 30' 30" W	213.94	E
"B"	241.03	N60° 27' 40" E	118.833	209.702
"C"	94.44	S18° 36' 30" E	89.503	30.136
"D"	288.74	S32° 35' 30" W	243.27	155.53
			332.773	239.838

AVON PLANNING BOARD
 PERMIT UNDER SUPERVISORY CONTROL LAW
 GRANTED NOT REQUIRED
 Query D MacPherson
 Ronald C Wass
 Edward Hottel
 DATE 11-1-17-58
 CLERK



I certify that this actual survey was made on the ground in accordance with the Land Court instructions of 1950. Oct. 1958, W.H. Pope Surveyor