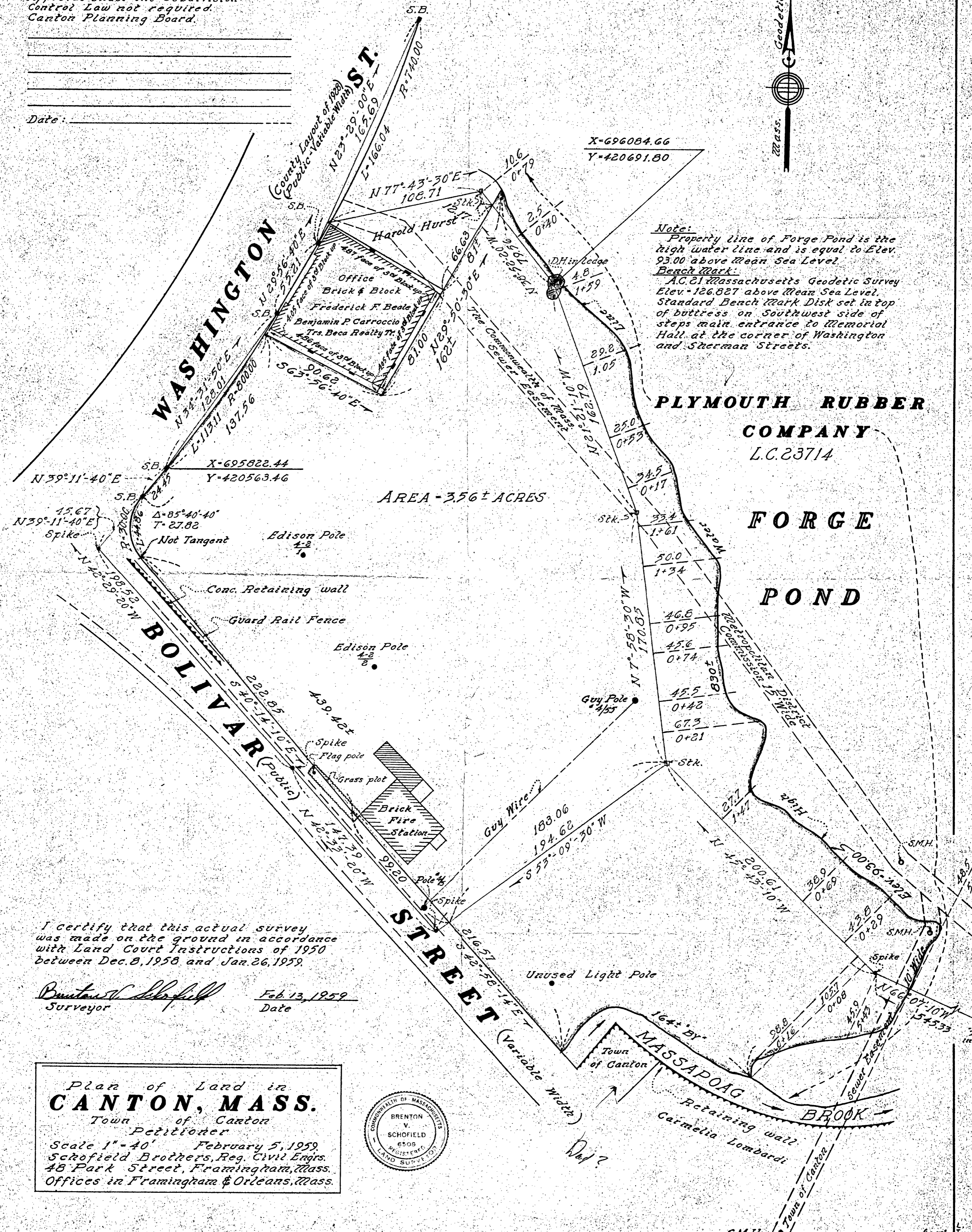


Approval under the Subdivision Control Law not required.  
Canton Planning Board.

Date: \_\_\_\_\_



5346

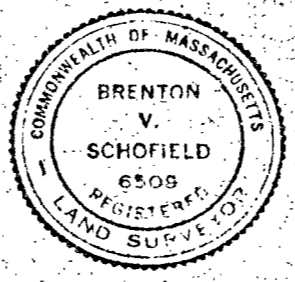


**Note:**  
 Property line of Forge Pond is the high water line and is equal to Elev. 93.00 above Mean Sea Level.  
**Bench Mark:**  
 A.C. 21 Massachusetts Geodetic Survey Elev. = 126.827 above Mean Sea Level. Standard Bench Mark Disk set in top of buttress on Southwest side of steps main entrance to Memorial Hall at the corner of Washington and Sherman Streets.

I certify that this actual survey was made on the ground in accordance with Land Court Instructions of 1950 between Dec. 8, 1958 and Jan. 26, 1959.

*Brenton V. Schofield* Surveyor  
 Feb. 13, 1959 Date

Plan of Land in  
**CANTON, MASS.**  
 Town of Canton  
 Petitioner  
 Scale 1" = 40' February 5, 1959  
 Schofield Brothers, Reg. Civil Engrs.  
 48 Park Street, Framingham, Mass.  
 Offices in Framingham & Orleans, Mass.



5346