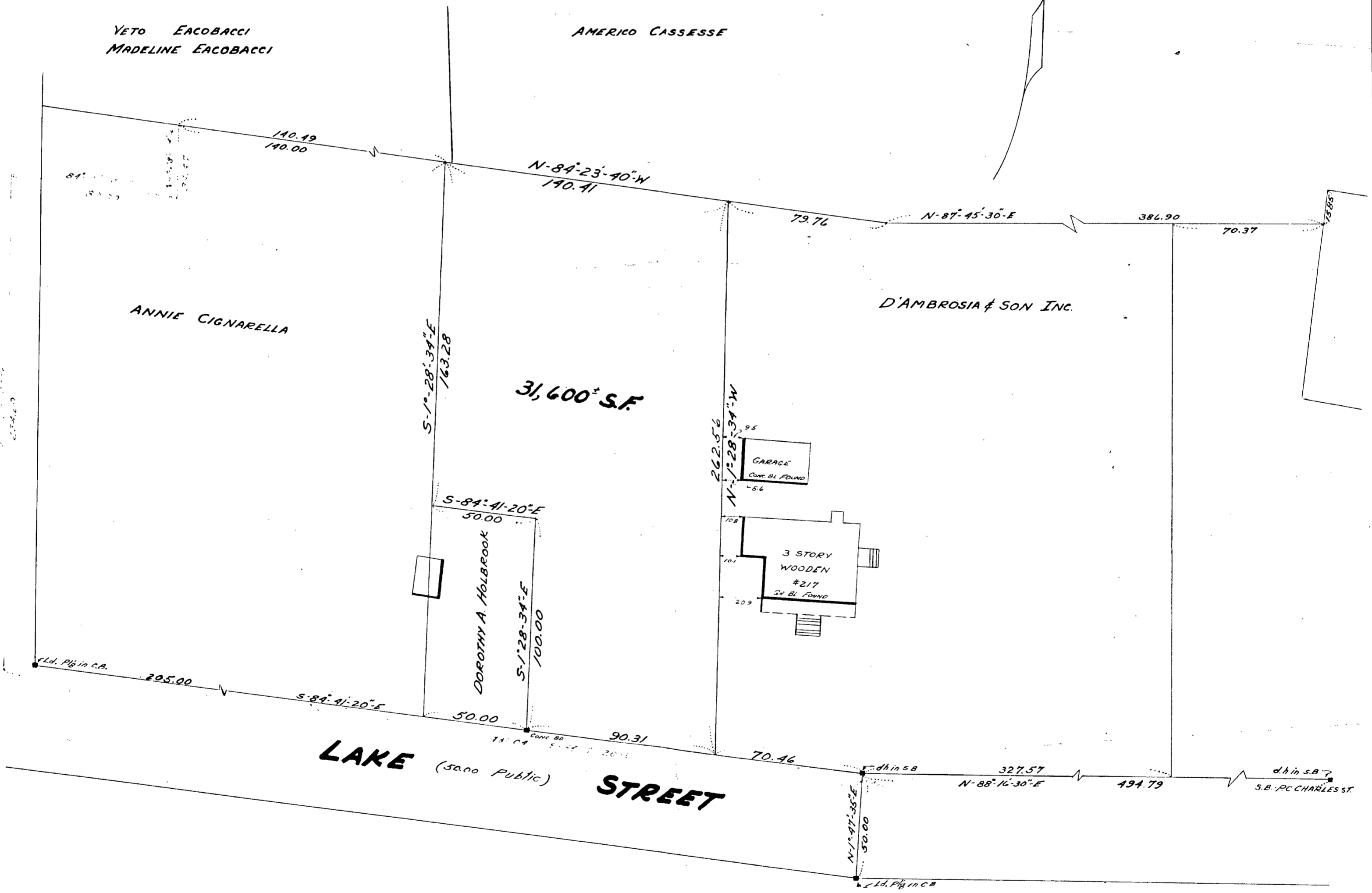
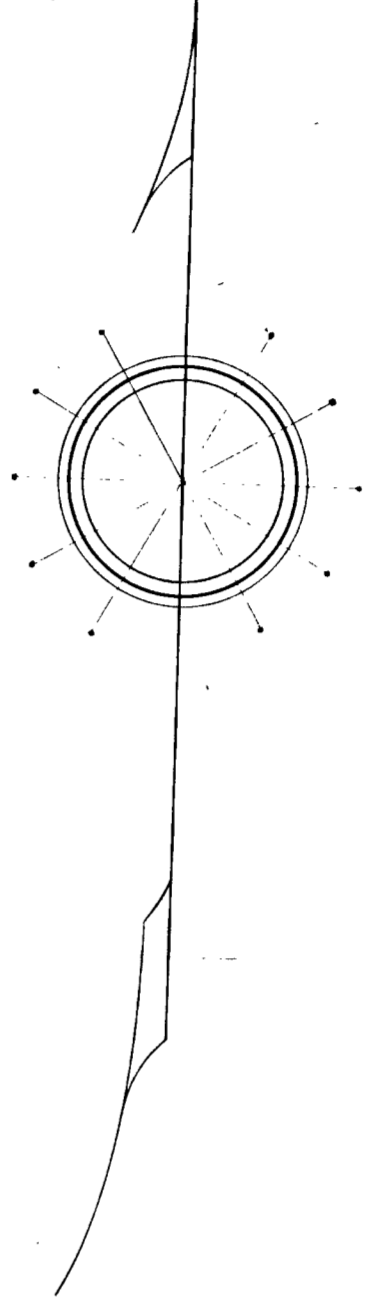


PLAN OF LAND WEYMOUTH (NORFOLK) MASS.

SCALE: 1 IN = 40 FT.
DATE: DEC 15, 1958
HAROLD P. MORRILL SURVEYOR
CANTON MASS.

CLASS B SURVEY

LINE	BEARING	DEFL. ANGLE	INT. ANGLE	IN	LAT	DEP	—W
163.28	S 1° 28' 34" E	83° 12' 46" L	96° 47' 14" R		163.28	4.20	
50.00	S 84° 41' 20" E	83° 12' 46" R	263° 12' 46" L		4.63	49.79	
100.00	S 1° 28' 34" E	83° 12' 46" L	96° 47' 14" R		99.97	2.58	
90.31	S 84° 41' 20" E	82° 47' 14" L	83° 12' 46" R		8.36	89.92	
262.56	N 1° 28' 34" W	82° 55' 04" L	97° 04' 54" R	262.47			6.76
140.41	N 84° 23' 40" W	77° 04' 54" L	82° 55' 04" R	13.72			139.74
		360° 00' 00"	720° 00' 00"	276.19	276.19	146.49	146.50



I certify that this Survey was made on the ground in accordance with the Land Court Instructions of 1950 between Oct 7, 1958 and Dec 20, 1958

Dec 22, 1958
Harold P. Morrill

12/10/58