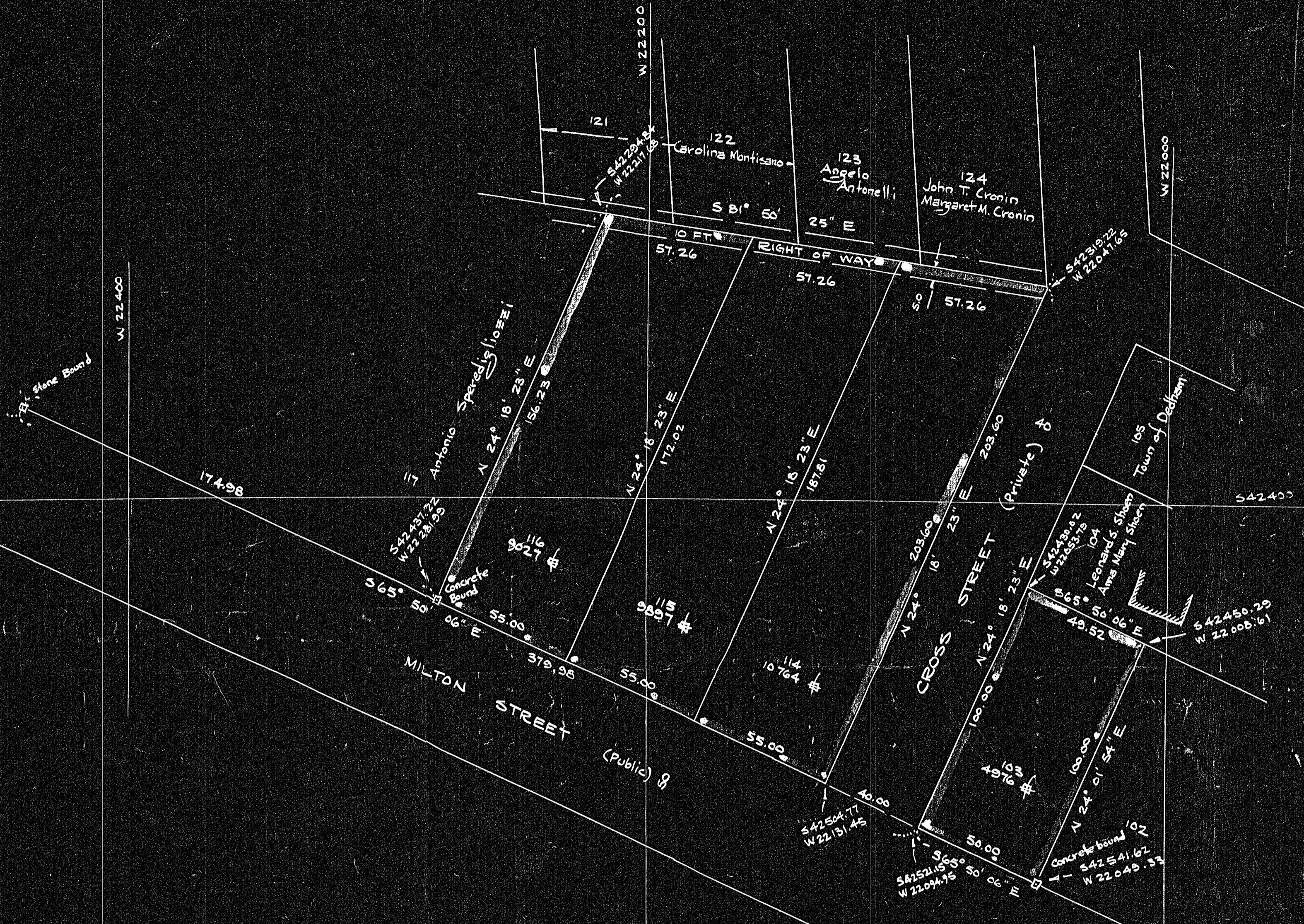


Dedham (1936 Series)
State House



PLAN OF LAND IN
DEDHAM, MASS.

Scale: 1 inch = 30 feet

Pilling Engineering Company, Inc.
26 Norfolk St. Dedham, Mass.

September 30, 1958

I certify that this actual survey was made on the ground
in accordance with the Land Court Instructions of 1950 on
July 30, 1958

Howard L. Millard Civil Engineer

Approval under Subdivision Control Law
not required

Henry T. Deane Feb. 18, 1959

Charles B. Sackett Corp.

Robert O. Julia

DEDHAM PLANNING BOARD

28951

MAY BE
FILED
2-26-59
Date By WES

Dedham
Sh. 20