

LOT CLOSURE

Dist.	Bearing	N	S	E	W
50.00	N 71-44-00W	15.672			47.480
60.20	N 18-16-00E	57.162		18.868	
96.44	N 71-03-03W	31.320			91.214
21.52	N 20-38-00E	20.140		7.583	
43.14	N 25-43-01E	38.870		18.721	
111.41	S 69-41-41E		38.662	104.487	
21.67	S 19-25-33W		20.436		7.207
29.05	S 71-44-00E		9.105	27.586	
100.00	S 18-16-00W		94.961		31.344
Totals		163.164		177.245	

TRAVERSE CLOSURE

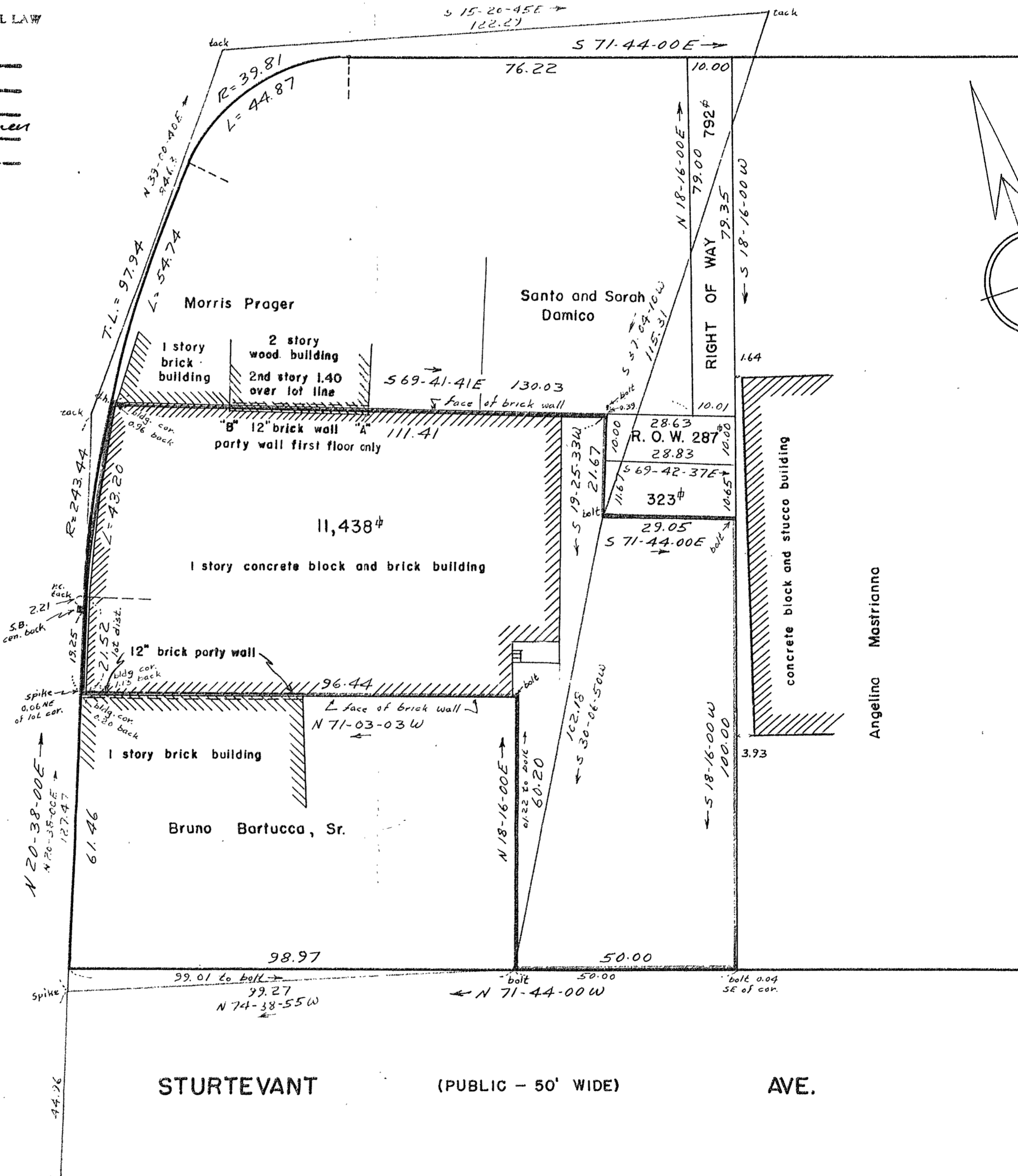
Dist	Bearing	N	S	E	W
127.47	N 20-38-00E	119.30		44.92	
84.63	N 39-00-40E	65.76		53.27	
122.29	S 75-20-45E		30.94	118.31	
115.31	S 37-04-10W		92.01		69.51
102.18	S 30-06-50W		88.39		51.26
99.27	N 74-38-55W	26.28			95.73
Totals		211.34		216.50	

DEAN (PUBLIC - 50' WIDE) ST.

APPROVAL UNDER SUBDIVISION CONTROL LAW NOT REQUIRED

Albert W. Thompson
 Town Engineer
 For
 NORWOOD PLANNING BOARD
 NORWOOD, MASS.
 Feb. 4, 1959

WASHINGTON ST. (PUBLIC - 60' WIDE)



I certify that this actual survey was made on the ground in accordance with the Land Court Instructions of 1950 on January 12, 1959.

Date Jan. 16, 1959

PLAN OF LAND
 IN
 NORWOOD MASS.

John J. Regan
 Surveyor for Everett M. Brooks Co.
 259 Walnut St. Newtonville

SCALE 1 IN = 20 FT
 EVERETT M. BROOKS CO.
 NEWTONVILLE & WAYLAND

JAN. 16, 1959
 CIVIL ENGRS
 MASS.

