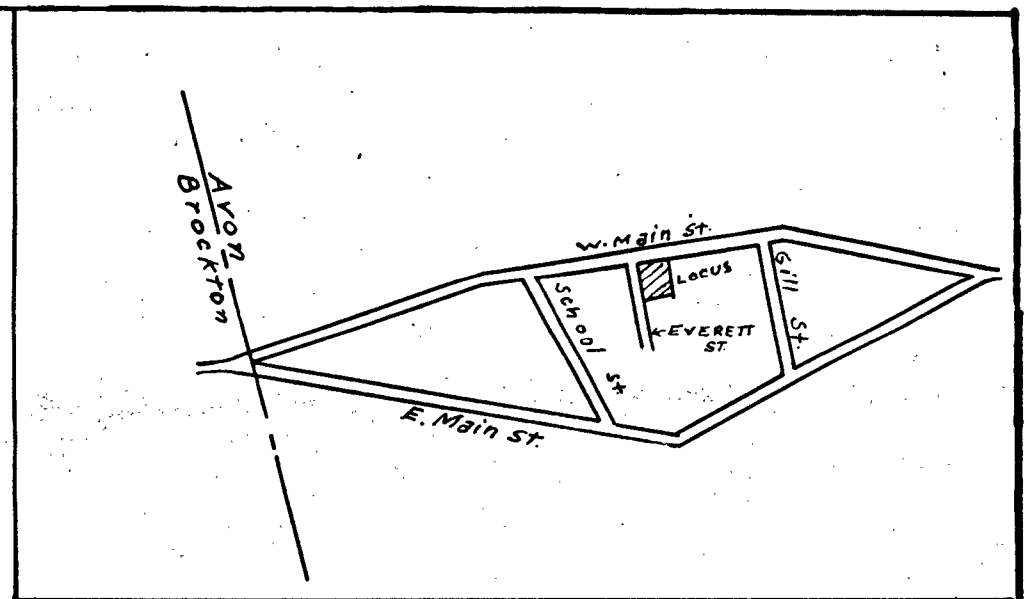
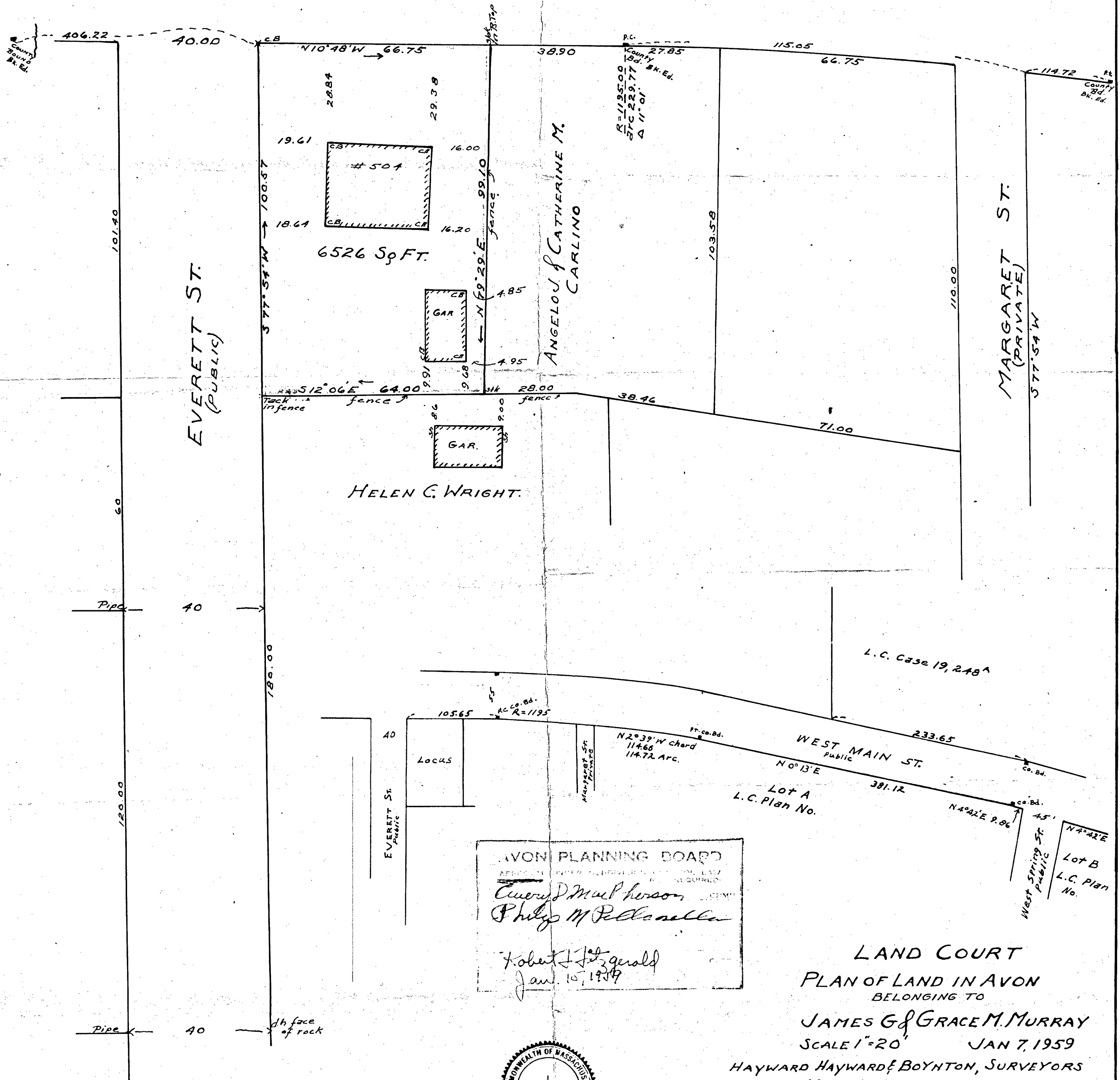


BEARING	DIST	NORTH	SOUTH	EAST	WEST
S 12° 06' E	64.00		62.58	13.42	
S 77° 54' W	100.57		21.08		98.34
N 10° 48' W	66.75	65.57			12.51
N 79° 29' E	99.10	18.09		97.43	
	330.42	83.66	83.66	110.85	110.85



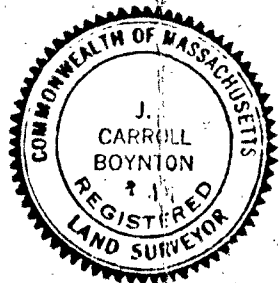
W. MAIN ST
(PUBLIC)

55



AVON PLANNING BOARD
APPROVED BY THE AVON PLANNING BOARD
Cary D. Mulherson
Philip M. Pedersella
Robert J. Fitzgerald
Jan. 15, 1959

LAND COURT
PLAN OF LAND IN AVON
BELONGING TO
JAMES G. & GRACE M. MURRAY
SCALE 1"=20' JAN 7, 1959
HAYWARD HAYWARD & BOYNTON, SURVEYORS
68 MAIN STREET BROCKTON, MASS.



I certify that this actual survey was made on the ground in accordance with the Land Court instructions of 1950, on Jan 7, 1959
Jan 7, 1959 J. C. Boynton