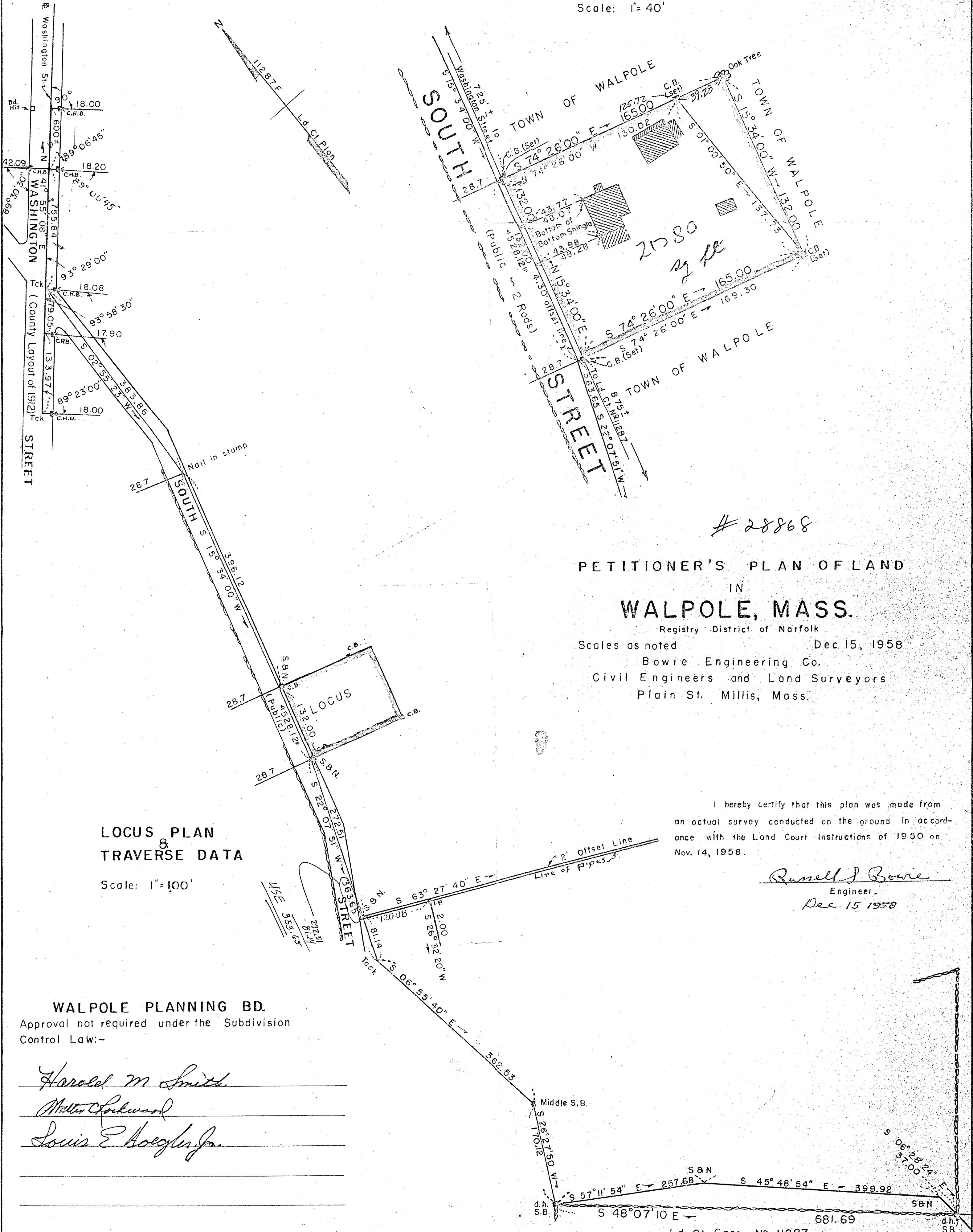


Scale: 1" = 40'



**LOCUS PLAN
TRAVERSE DATA**

Scale: 1" = 100'

**PETITIONER'S PLAN OF LAND
IN
WALPOLE, MASS.**

Registry District of Norfolk
Scales as noted Dec. 15, 1958
Bowie Engineering Co.
Civil Engineers and Land Surveyors
Plain St. Millis, Mass.

I hereby certify that this plan was made from an actual survey conducted on the ground in accordance with the Land Court Instructions of 1950 on Nov. 14, 1958.

Russell S. Bowie
Engineer.
Dec. 15 1958

WALPOLE PLANNING BD.
Approval not required under the Subdivision Control Law:-

Harold M. Smith
Milton Chalkwood
Louis E. Hoegler, Jr.

Ld. Ct. Case No. 11287

DATE: _____