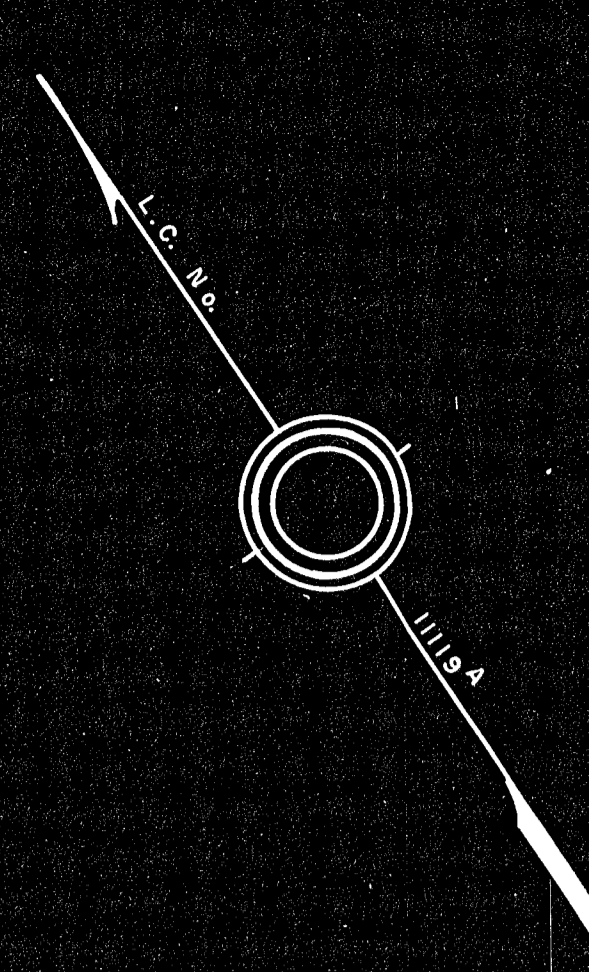


CLYDE ST.



ST.

FORMERLY COUNTRY ROAD (PRIVATE)

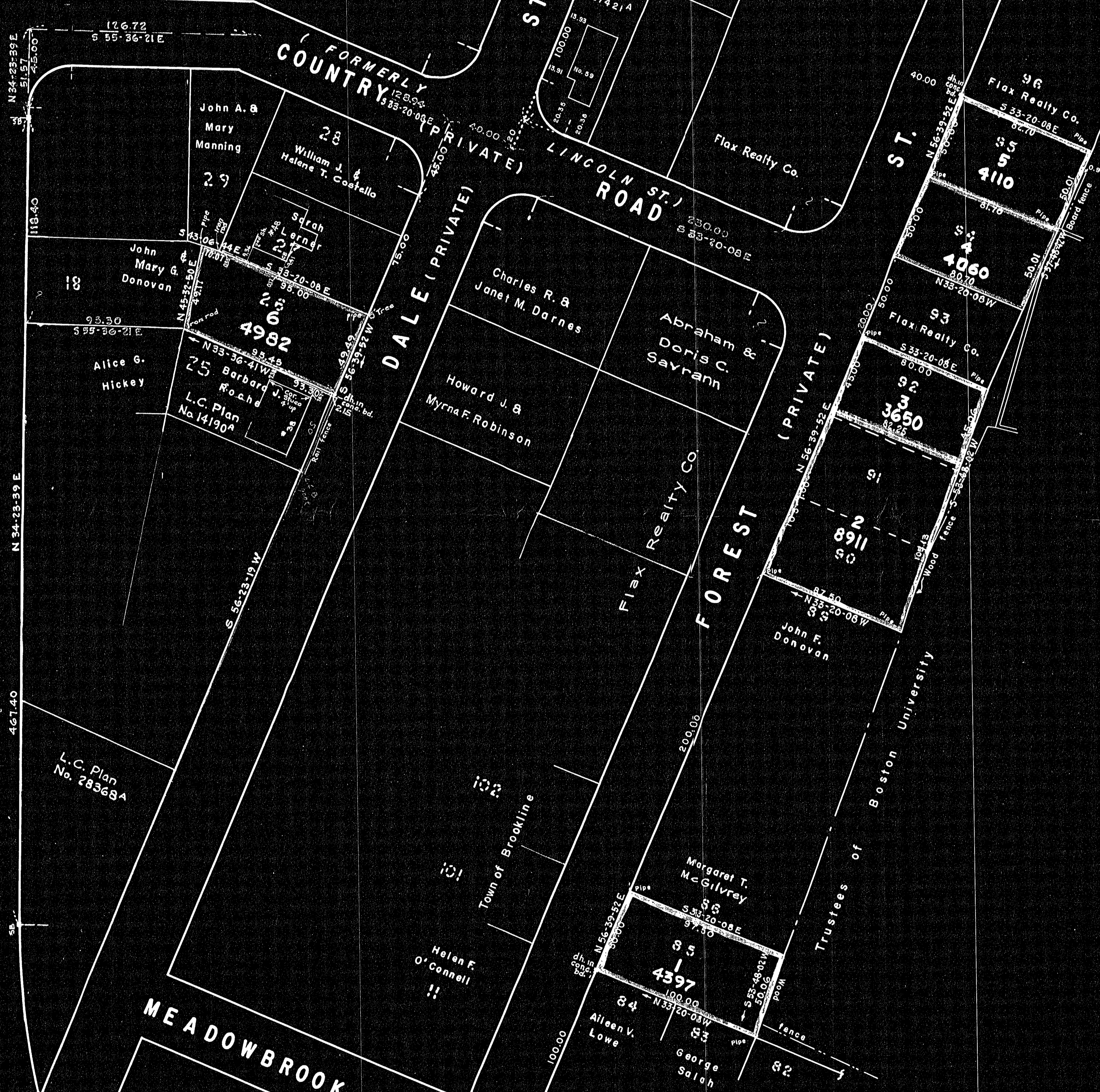
LINCOLN ST. ROAD

DALE (PRIVATE)

FOREST (PRIVATE)

MEADOWBROOK (formerly GARARDUS AVE.)

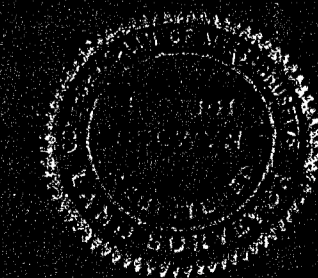
LARKIN RD.



Note: Dotted lot numbers refer to Plan by W.O. Badger, C.E., dated May 1893, Recorded in Norfolk Registry of Deeds Book 694 Page 640.

BROOKLINE PLANNING BOARD
Date: APPROVAL UNDER THE SUBDIVISION CONTROL LAW NOT REQUIRED
Secretary & Engineer Planning Board
Town of Brookline

PLAN OF LAND
BROOKLINE, MASS.
Scale: 40 Feet to an inch
DEC. 17, 1958
Joseph Selwyn - Civil Engineer
14 Linden Ave., Belmont, Mass.



NOTE: I certify that this actual survey was made on the ground in accordance with the Land Court Instructions of 1950 on DEC. 17, 1958.
Date DEC. 17, 1958. Joseph Selwyn, C.E.