

Note:
An attempt was made to tie into Land Court Plan No. 13828 A located on Chapel St., - 157.85' to P.I. @ Washington St., but nothing could be found on the ground.

PLAN OF LAND CANTON, MASS.

SCALE: 1"=40' OCT. 28, 1958
L.W. DeCelle Surveyors Inc.
CIVIL ENGINEERS
285 UNION ST., RANDOLPH

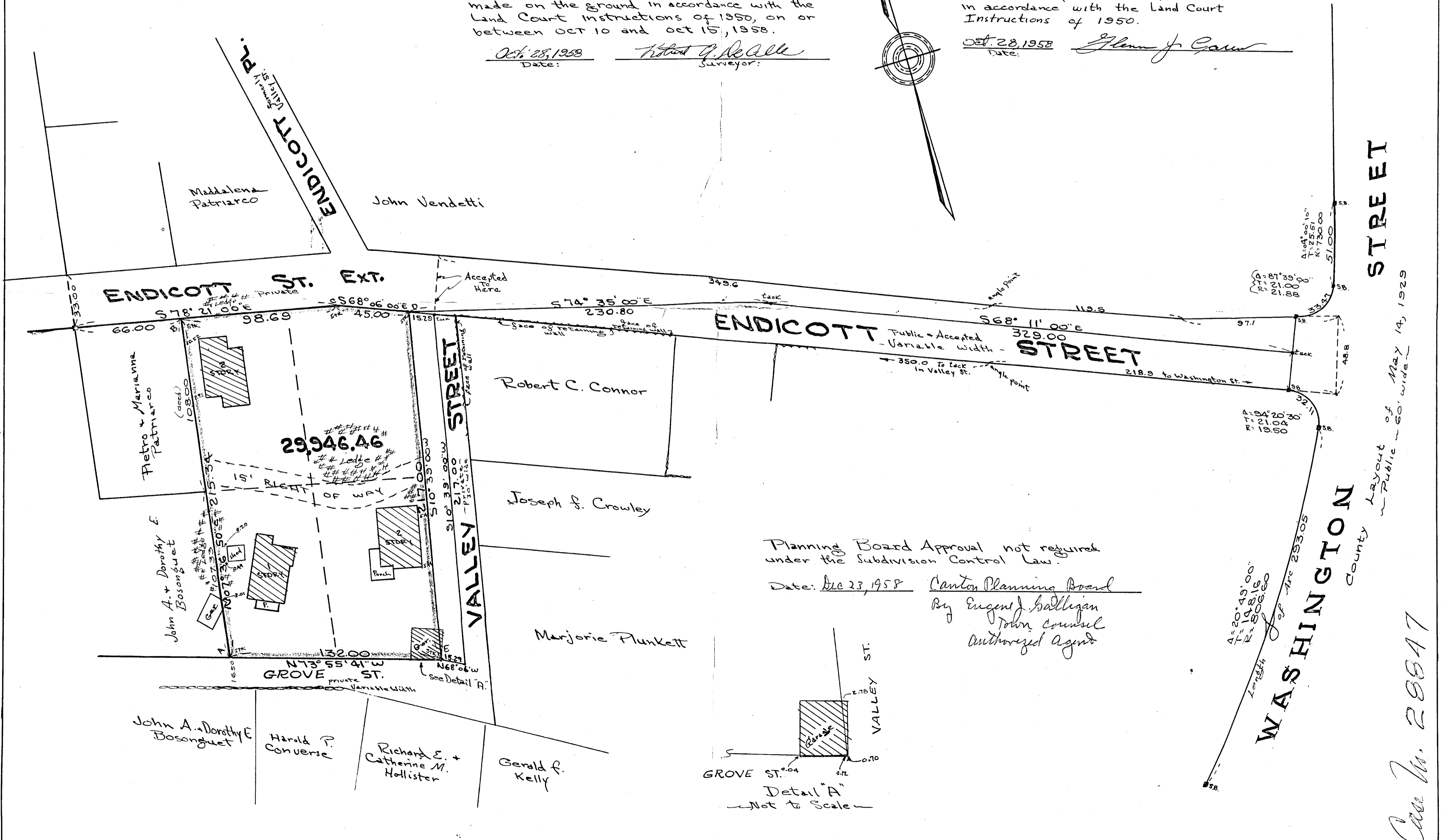
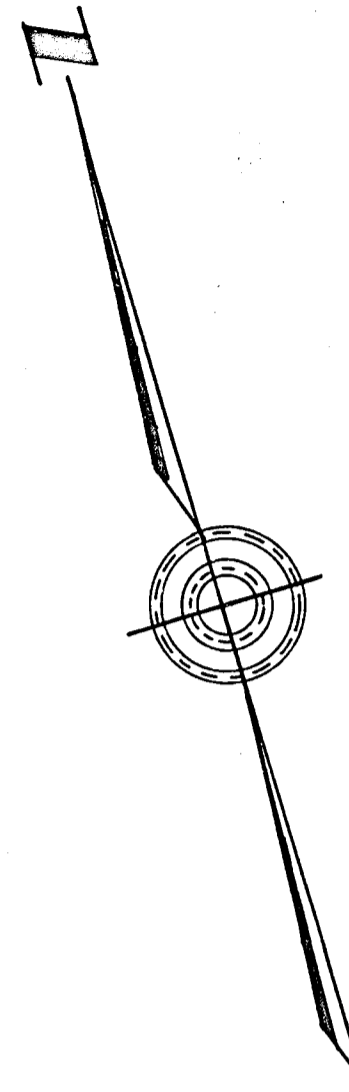
	Bearing	distance	East	West	North	South
A ^B	N 67° 36' 50" E	215.34	28.53		213.44	
B ^C	S 78° 21' 00" E	98.69	96.66			19.93
C ^D	S 68° 06' 00" E	45.00	41.75			16.78
D ^E	S 10° 39' 00" W	217.00		40.10		213.76
E ^A	N 73° 55' 41" W	132.00		176.84	36.54	
			166.94	166.94	249.98	249.97

I certify that this actual survey was made on the ground in accordance with the Land Court instructions of 1950, on or between OCT 10 and OCT 15, 1958.

Oct. 28, 1958
Date: Robert G. DeCelle
Surveyor:

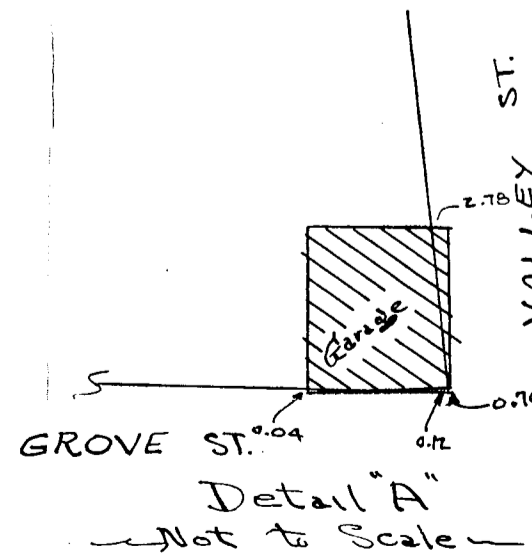
I certify that this plan was made in accordance with the Land Court Instructions of 1950.

Oct. 28, 1958
Date: Glenn J. Casw



Planning Board Approval not required under the Subdivision Control Law.

Date: Dec 23, 1958
Canton Planning Board
By Eugene J. Halligan
Town Council
Authorized Agent



STREET

WASHINGTON STREET
County
Layout of May 14, 1929
Public - 60' wide

Case No. 28847