

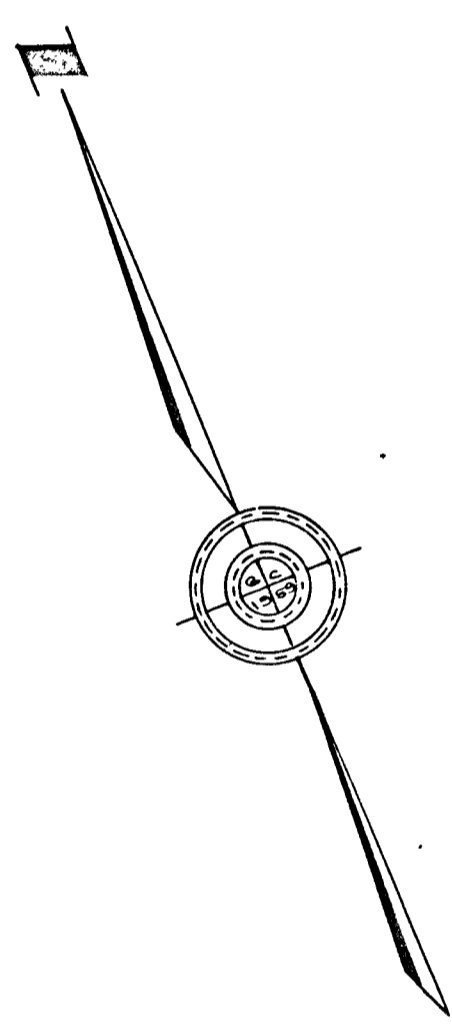
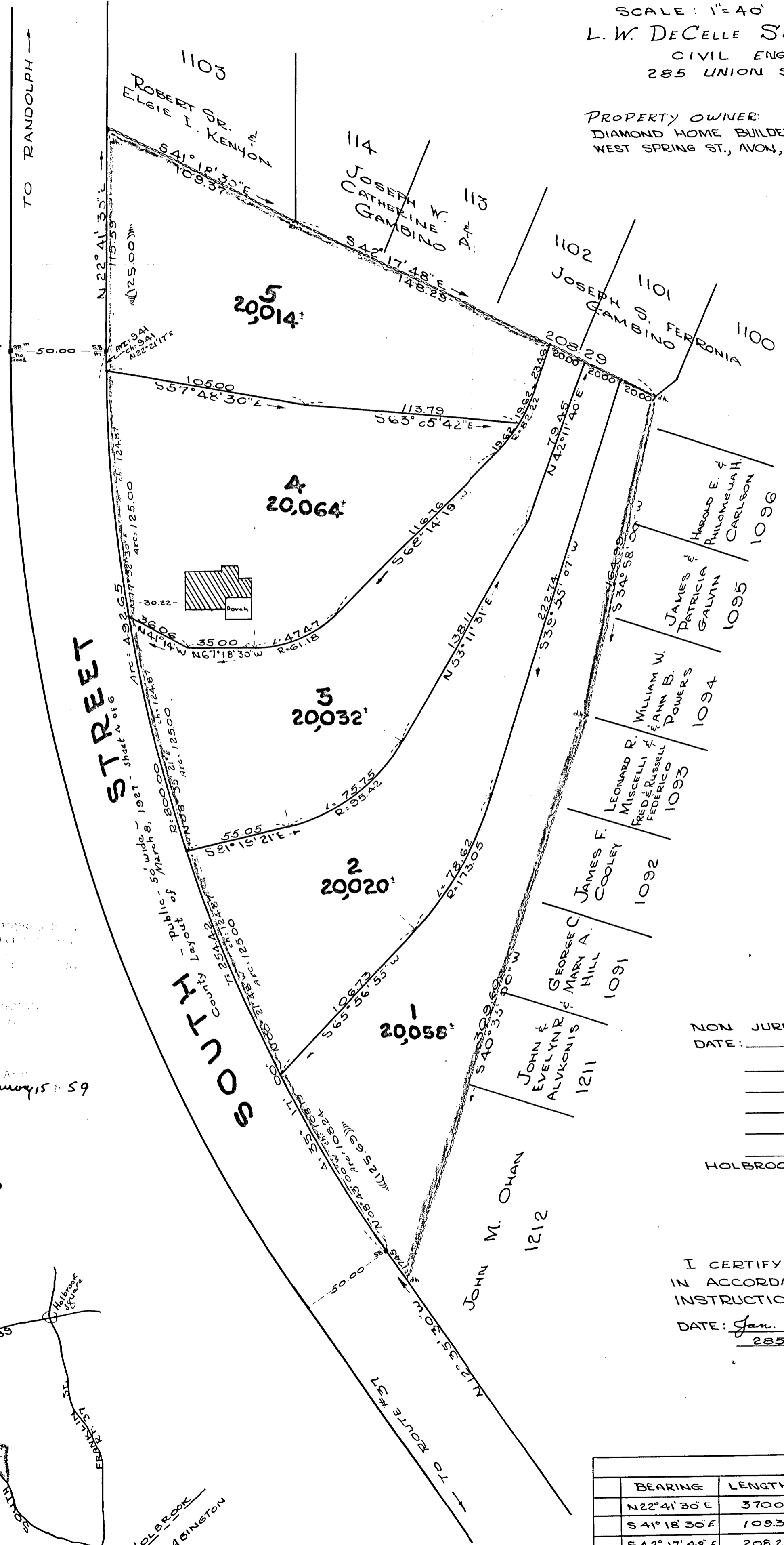
APPLICATION UNDER CHAPTER 584
 FILED DEC. 26, 1958 PENDING.
Lawrence W. DeCelle Jan 4/1959

BEING A SUBDIVISION OF LAND
 SHOWN ON LAND COURT PLAN NO. 28845A

PLAN OF LAND HOLBROOK, MASS.

SCALE: 1" = 40' JAN. 13, 1959
 L. W. DECELLE SURVEYORS INC.
 CIVIL ENGINEERS
 285 UNION ST., RANDOLPH

PROPERTY OWNER:
 DIAMOND HOME BUILDERS INC.
 WEST SPRING ST., AVON, MASS.

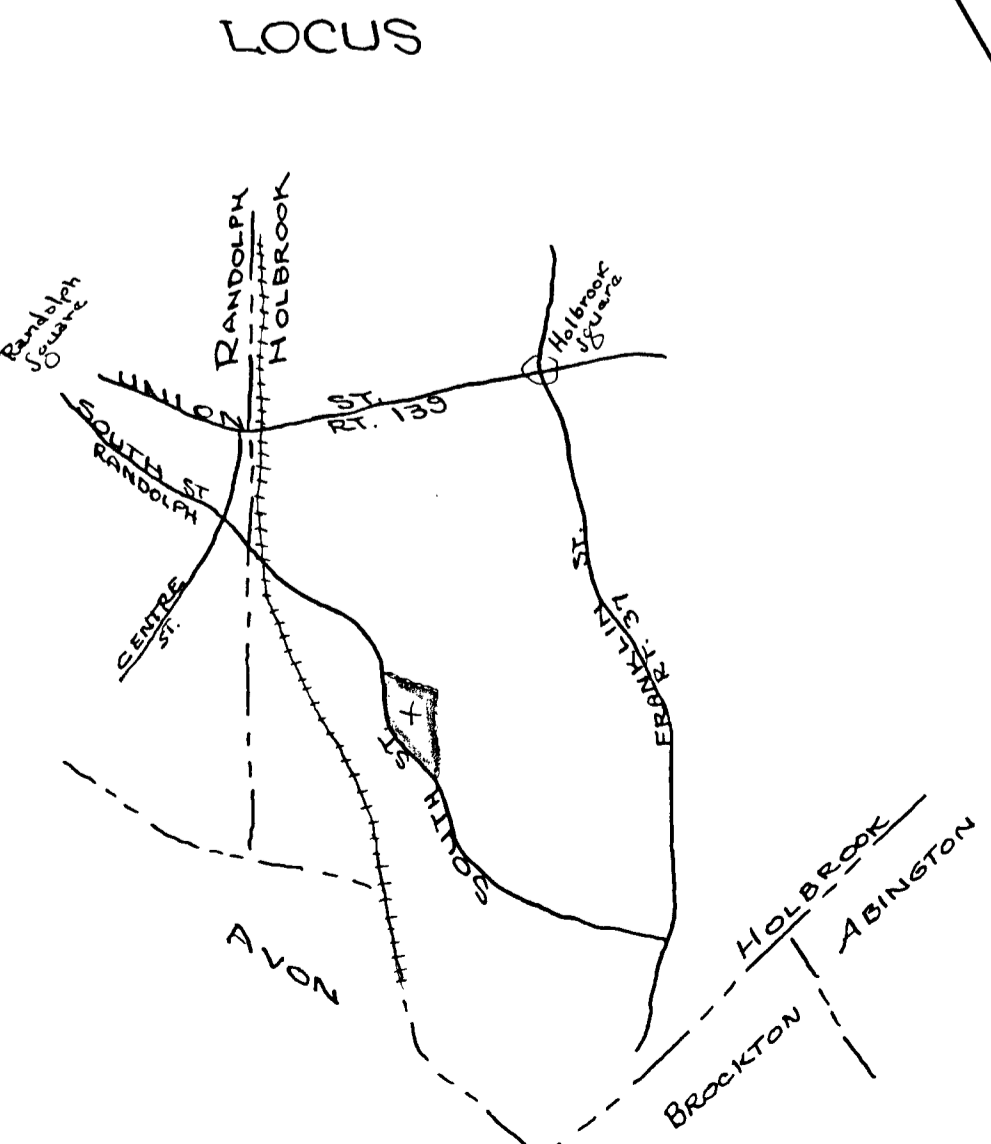


CERTIFICATION OF THE PLANNING BOARD
 AS TO THE ENFORCEMENT OF THE
 ZONING REGULATIONS OF THE
 TOWN OF HOLBROOK, MASSACHUSETTS
 IN CONNECTION WITH THE
 SUBDIVISION OF LAND SHOWN
 ON LAND COURT PLAN NO. 28845A
 DATED JANUARY 13, 1959
Glenn J. Carew
Charles E. Steg
 HOLBROOK PLANNING BOARD
 FILE NO. 219 Date January 15, 1959

NON JURISDICTION APPROVAL
 DATE: _____

 HOLBROOK PLANNING BOARD

I CERTIFY THAT THIS PLAN WAS MADE
 IN ACCORDANCE WITH THE LAND COURT
 INSTRUCTIONS OF 1950.
 DATE: *Jan. 13, 1959* *Glenn J. Carew*
285 Union St., Randolph, Mass.



BEARING	LENGTH	DEPARTURES		LATITUDES	
		EAST	WEST	NORTH	SOUTH
N22°41'30"E	370.01	142.74		341.37	
S41°18'30"E	109.37	72.20			82.16
S42°17'48"E	208.29	140.17			154.07
S34°58'00"W	164.99		94.56		135.21
S40°33'00"W	309.60		201.27		235.25
N12°35'30"W	271.87		59.27	265.33	
		355.11	355.10	606.70	606.69

PLAN OF LAND HOLBROOK, MASS.

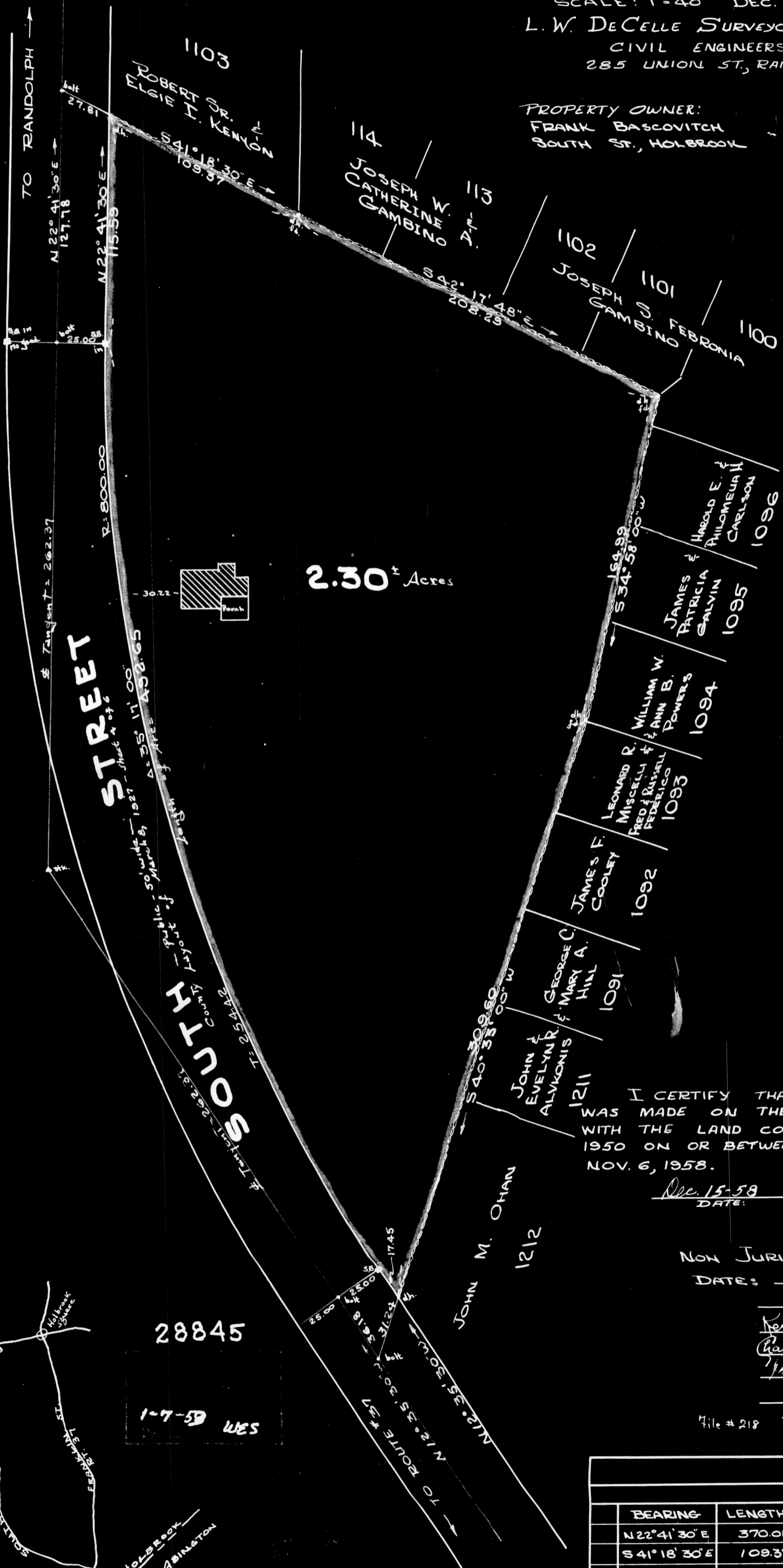
SCALE: 1"=40' DEC. 15, 1958

L. W. DeCelle SURVEYORS INC.

CIVIL ENGINEERS

285 UNION ST., RANDOLPH

PROPERTY OWNER:
FRANK BASCOVITCH
SOUTH ST., HOLBROOK



2.30± Acres

I CERTIFY THAT THIS ACTUAL SURVEY
WAS MADE ON THE GROUND IN ACCORDANCE
WITH THE LAND COURT INSTRUCTIONS OF
1950 ON OR BETWEEN NOV. 3, 1958 AND
NOV. 6, 1958.

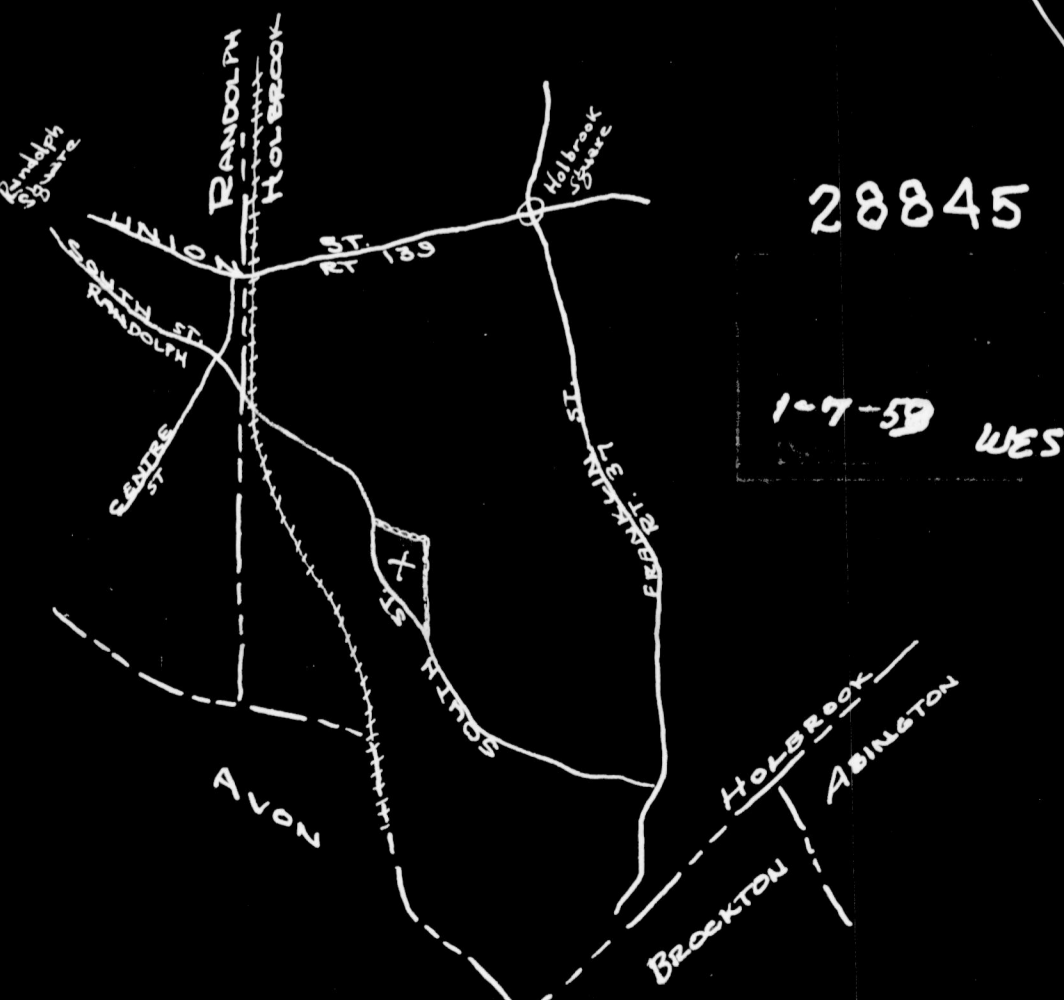
Dec. 15-58 DATE: Charles W. Letto SURVEYOR:

NON JURISDICTION APPROVAL
DATE: _____

Kenneth Bawie, Clerk
Charles E. Lee
Peter George

File # 218 December 20, 1958

LOCUS



BEARING	LENGTH	DEPARTURES		LATITUDES	
		EAST	WEST	NORTH	SOUTH
N 22° 41' 30" E	370.01	142.74		341.37	
S 41° 18' 30" E	109.37	72.20			82.16
S 42° 17' 48" E	208.29	140.17			154.07
S 34° 58' 00" W	164.99		94.56		135.21
S 40° 33' 00" W	309.60		201.27		235.25
N 12° 35' 30" W	271.87		59.27	265.33	
		355.11	355.10	606.70	606.69