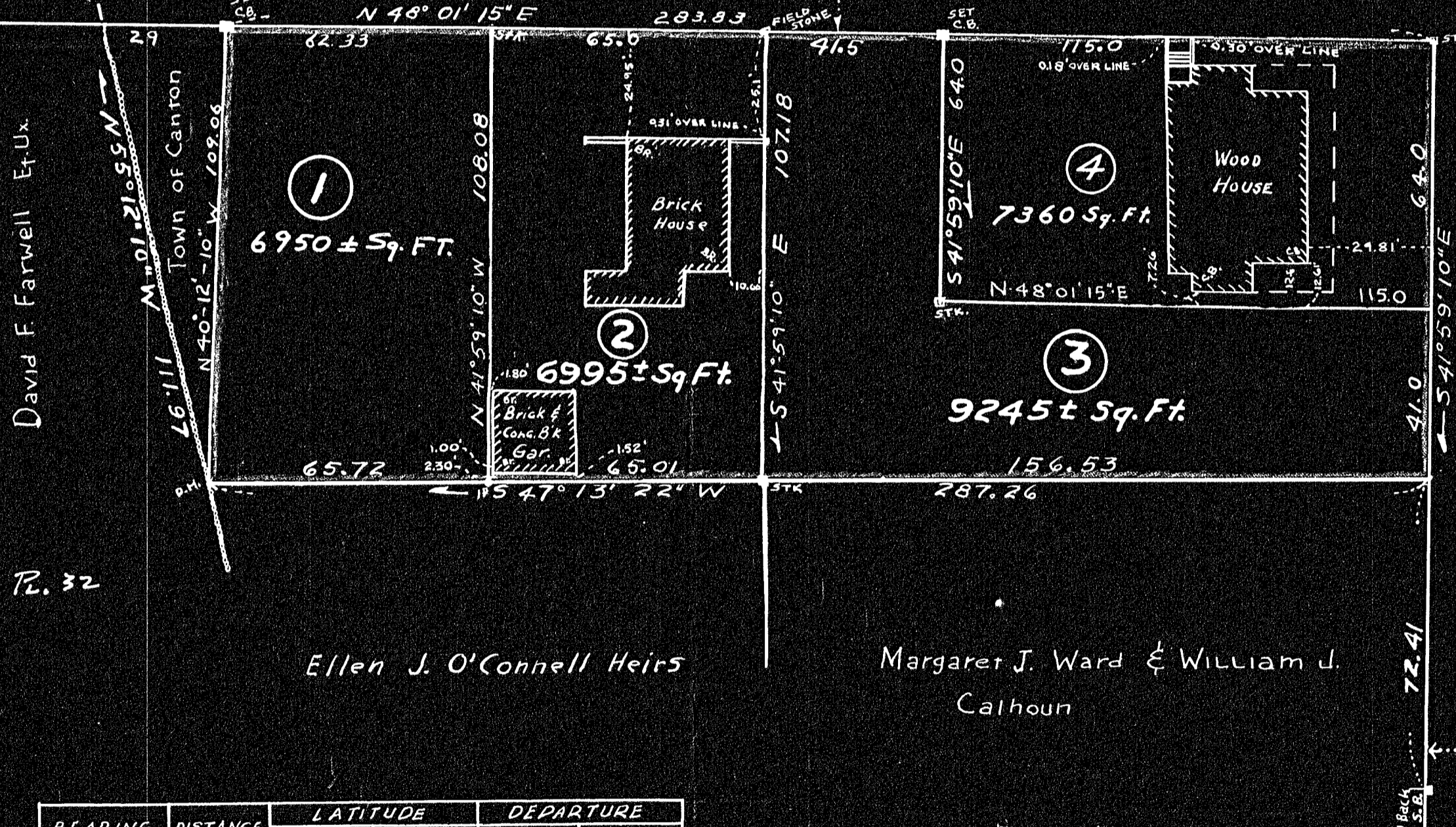


WALNUT STREET  
(PUBLIC)

ROCKLAND STREET  
(PUBLIC)

BELCHER STREET  
(PUBLIC)



28799  
12-16-58  
Date... WES

BEARING	DISTANCE	LATITUDE		DEPARTURE	
		NORTH	SOUTH	EAST	WEST
N48°01'15"E	283.83	189.84		211.00	
S41°59'10"E	105.40		78.05	70.24	
S47°13'22"W	287.26		195.09		210.85
N40°12'10"W	109.06	83.30			70.40
		273.14	273.14	281.24	281.25

Dec 2, 1958  
Approval under subdivision  
control is not required  
Canton Planning Board  
by Eugene J. ...  
Town Council  
William ...



I certify that this actual survey was made on the ground in accordance with the Land Court Instructions of 1950 on or between 5 NOV. 1958 and 5 NOV. 1958  
Date November 5, 1958  
J. C. Boynton

LAND COURT  
DEC 16 1958

PLAN OF LAND  
IN  
CANTON MASS.  
SCALE 1" = 30' NOVEMBER 5, 1958  
HAYWARD HAYWARD & BOYNTON ENGINEERS  
68 MAIN ST. BROCKTON