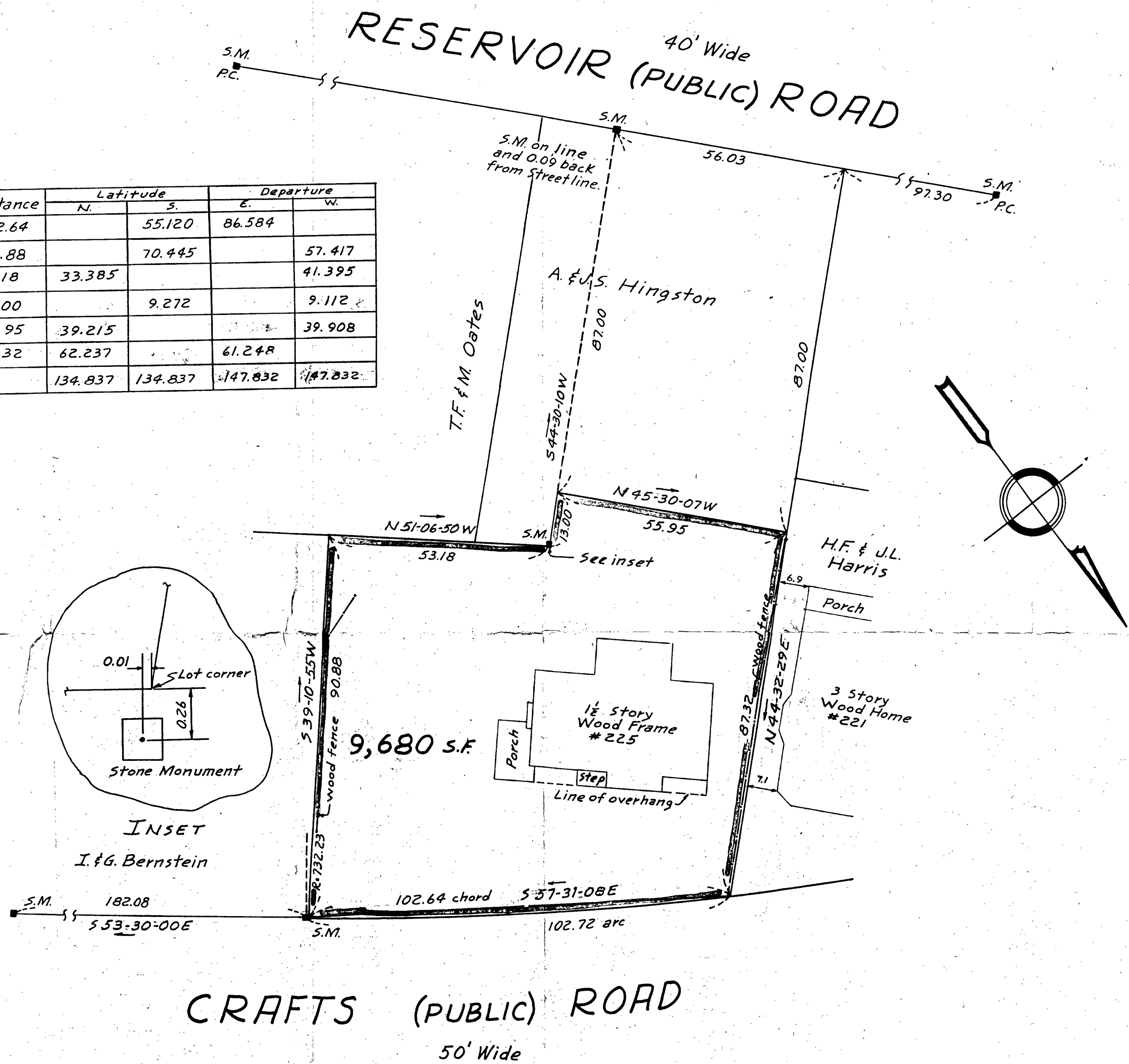


Sta.	Int. angle	Def. angle	Bearing	Distance	Latitude		Departure	
					N.	S.	E.	W.
A	102-03-37	77-56-23	S57-31-08 E	102.64		55.120	86.584	
B	83-17-57	96-42-03	S39-10-55 W	90.88		70.445		57.417
C	90-17-45	89-42-15	N51-06-50 W	53.18	33.385			41.395
D	264-23-00	84-23-00	S44-30-10 W	13.00		9.272		9.112
E	90-00-17	89-59-43	N45-30-07 W	55.95	39.215			39.908
F	89-57-24	90-02-36	N44-32-29 E	87.32	62.237		61.248	
					134.837	134.837	147.832	147.832



I certify that this actual survey was made on the ground in accordance with the Land Court Instructions of 1950 between Oct. 14, 1958 and Oct. 15, 1958.

Date: Oct. 21, 1958

Ralph H. Jones
Engineer

PLAN OF LAND
IN
BROOKLINE ~ MASS

Scale: 1 inch = 20 feet
Date: October 21, 1958
Henry F. Bryant & Son, Inc.
Engineers - Brookline, Mass.

Approval under Subdivision Control Law not required.
William A. Devine
Secretary & Engineer of
Brookline Planning Board