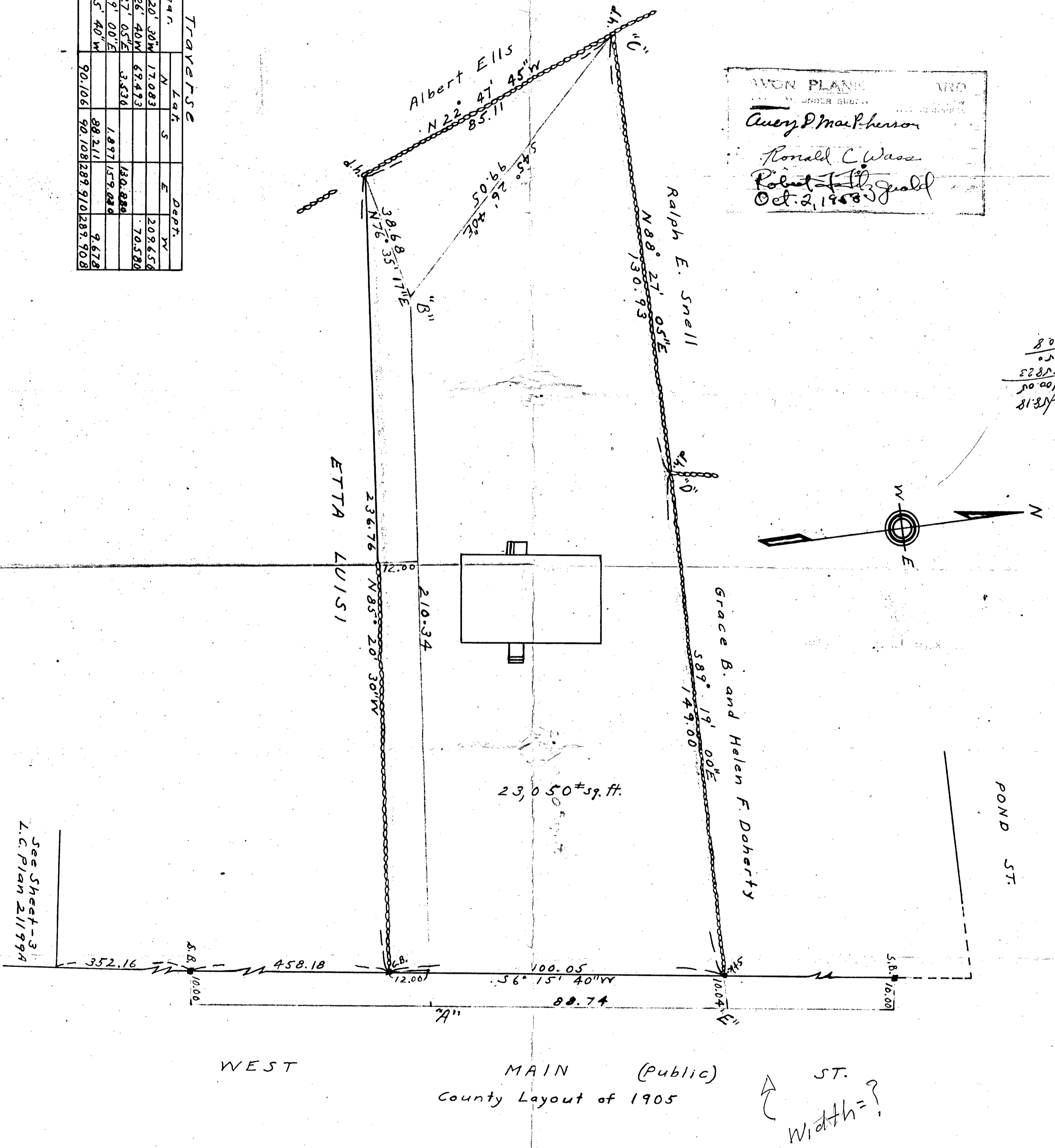


PLAN OF LAND
IN
AVON, MASS
Scale: 1 in. = 20 ft. Sept. 18, 1958
W. H. Pope Surveyor
123 School St. Avon, Mass.

Sta.	Dist.	Bear.	N	E	DEPT.
"A"	210.34	N85° 20' 30" W	17.083		209.658
"B"	97.05	N45° 26' 40" W	67.473		70.580
"C"	130.93	N88° 27' 05" E	3.536		130.880
"D"	157.04	S89° 19' 00" E	1.897	159.020	
"E"	88.74	S 6° 15' 40" W	88.211		9.678
			90.106	90.108	289.908

TRAVEL LOG

AVON PLANNING BOARD
UNDER SUPERVISION OF
Avery D. MacPherson
Ronald C. Wass
Robert J. Gould
Oct. 2, 1958



808
24
58823
100.00
48818

See Sheet-3
L.C. Plan 211994

I certify that this actual survey was made on the ground in accordance with the Land Court instructions of 1950. Sept. 1958, W. H. Pope Surveyor

ok C³