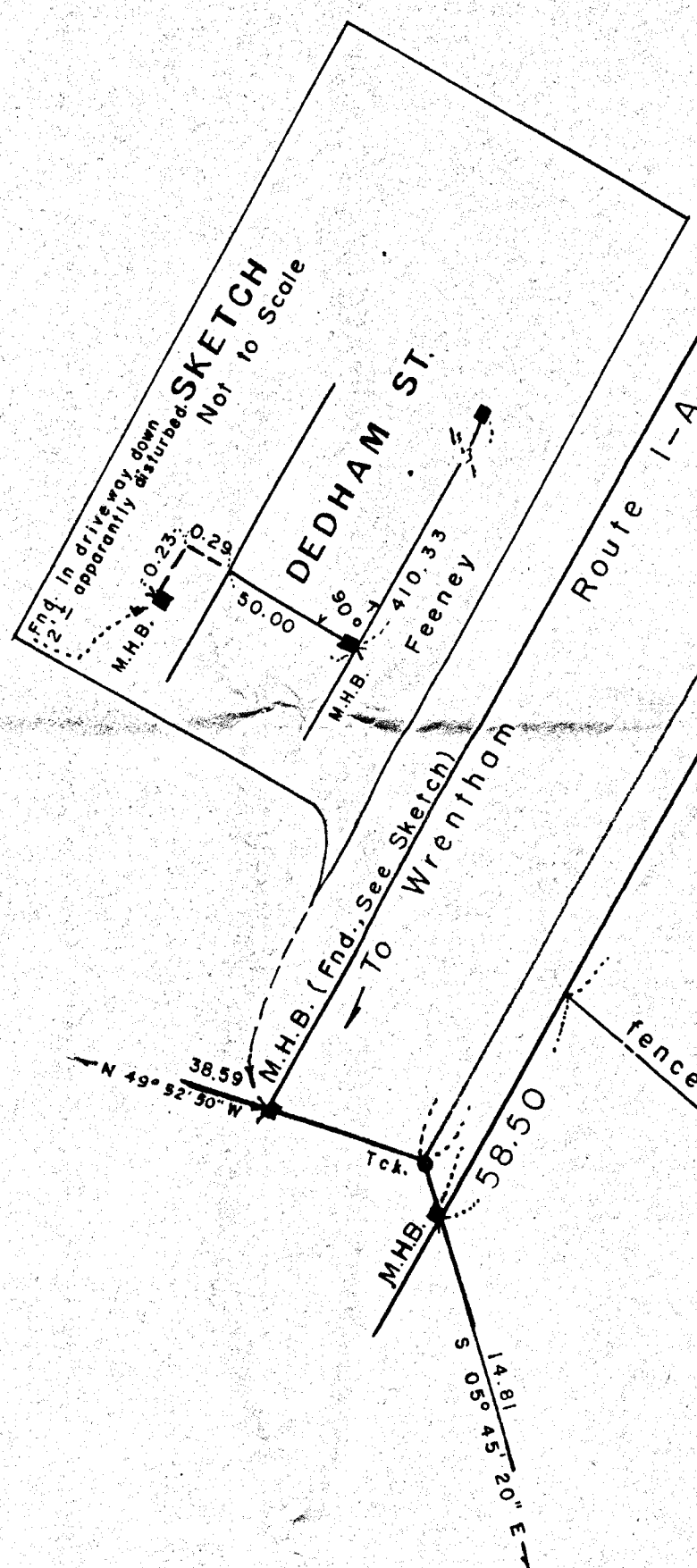
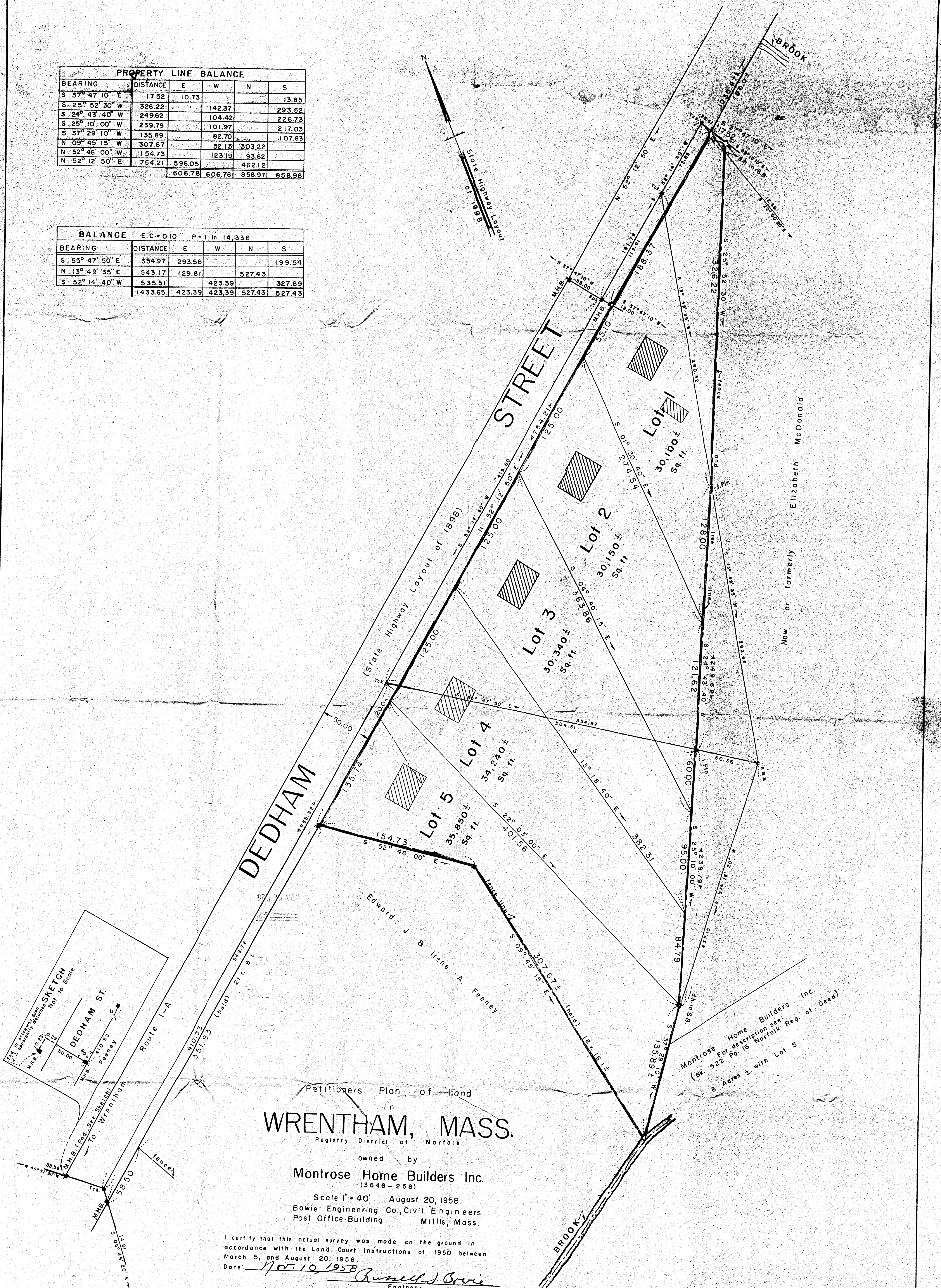


PROPERTY LINE BALANCE					
BEARING	DISTANCE	E	W	N	S
S 37° 47' 10" E	17.52	10.73			13.85
S 25° 52' 30" W	326.22		142.37		293.52
S 24° 43' 40" W	249.62		104.42		226.73
S 25° 10' 00" W	239.79		101.97		217.03
S 37° 29' 10" W	135.89		82.70		107.83
N 09° 45' 15" W	307.67		52.13	303.22	
N 52° 46' 00" W	154.73		123.19	93.62	
N 52° 12' 50" E	754.21	596.05		462.12	
		606.78	606.78	858.97	858.96

BALANCE E.C.=0.10 P=1 in 14,336					
BEARING	DISTANCE	E	W	N	S
S 55° 47' 50" E	354.97	293.56			199.54
N 13° 49' 35" E	543.17	129.81		527.43	
S 52° 14' 40" W	535.51		423.39		327.89
	1433.65	423.39	423.39	527.43	527.43



Petitioners Plan of Land  
in  
**WRENTHAM, MASS.**  
Registry District of Norfolk

owned by  
**Montrose Home Builders Inc.**  
(3646-258)

Scale 1" = 40' August 20, 1958  
Bowie Engineering Co., Civil Engineers  
Post Office Building Millis, Mass.

I certify that this actual survey was made on the ground in accordance with the Land Court Instructions of 1950 between March 5, and August 20, 1958.

Date: Nov. 10, 1958  
Russell J. Bowie  
Engineer

Approval not required under the Subdivision Control Law.

**WRENTHAM PLANNING BOARD**

John Woodham  
Angus R. [unclear]  
Date: Nov 7 1958