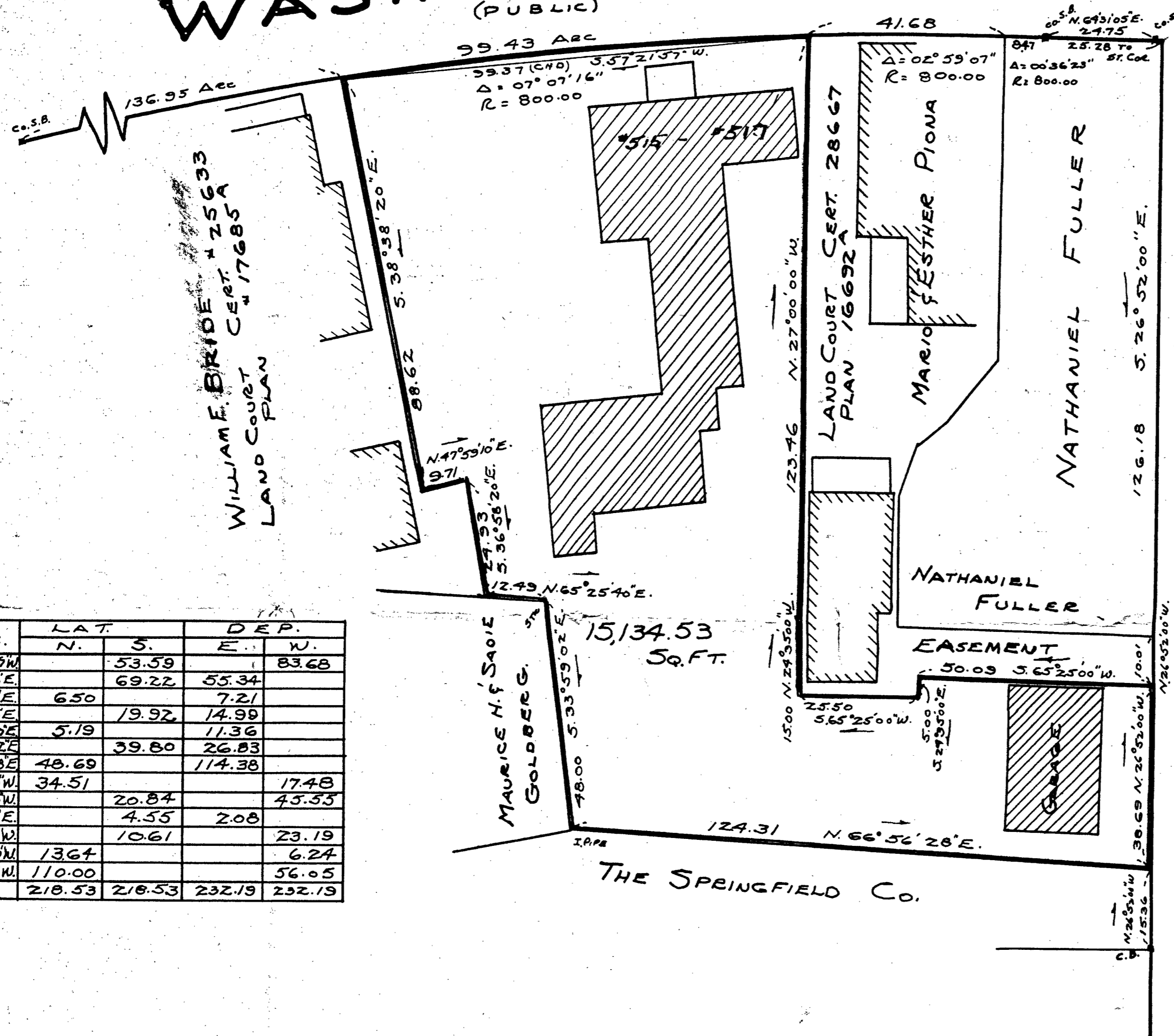


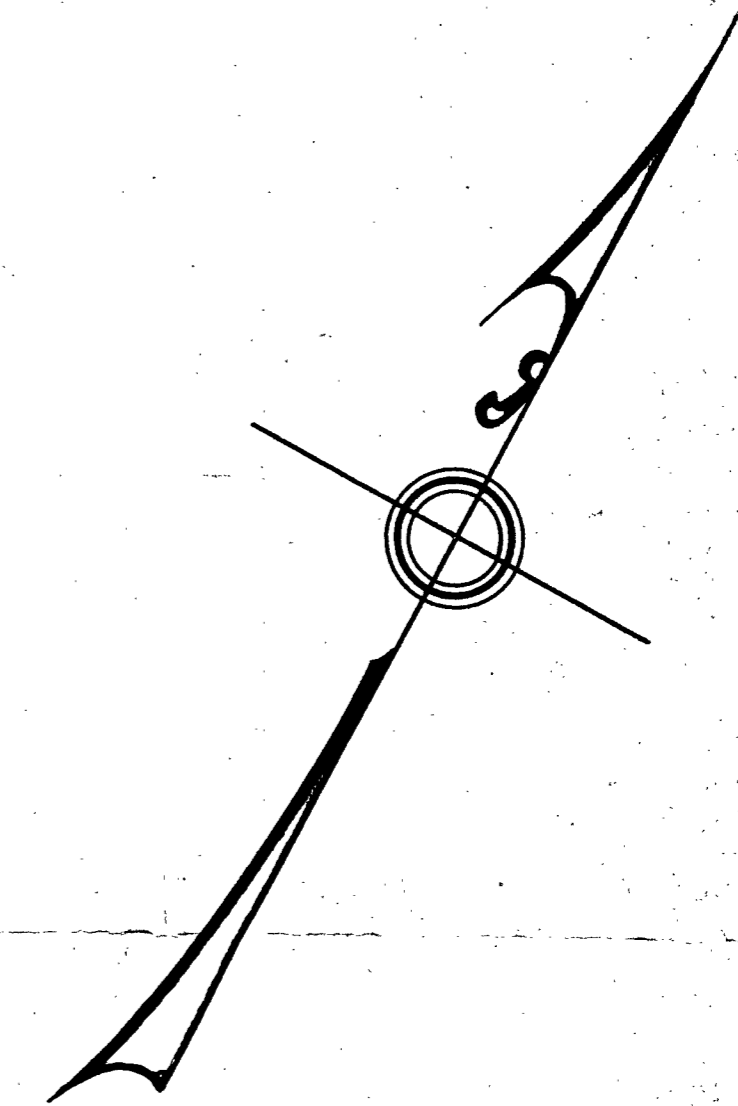
WASHINGTON
(PUBLIC)

ST.



DIST.	BEAR.	LAT.		DEP.	
		N.	S.	E.	W.
99.37	S.57°21'59"W		53.59		83.68
88.62	S.38°38'20"E		69.22	55.34	
9.71	N.47°59'10"E	6.50		7.21	
24.93	S.36°58'26"E		19.92	14.99	
12.49	N.65°25'40"E	5.19		11.36	
48.00	S.33°59'02"E		39.80	26.83	
124.31	N.66°56'28"E	48.69		114.38	
38.69	N.26°52'00"W	34.51			17.48
50.09	S.65°25'00"W		20.84		45.55
5.00	S.24°35'00"E		4.55	2.08	
25.50	S.65°25'00"W		10.61		23.19
15.00	N.24°35'00"W	13.64			6.24
123.46	N.27°00'00"W	110.00			56.05
		218.53	218.53	232.19	232.19

ROCKLAND ST.
(PUBLIC)



PLAN OF LAND
IN
CANTON MASS.
BELONGING TO
NICHOLAS J. & BESS MARATHAS

I CERTIFY THAT THIS SURVEY WAS
MADE ON THE GROUND IN ACCORDANCE
WITH THE LAND COURT INSTRUCTIONS
OF 1950 BETWEEN OCT. 7 1958
AND OCT. 10 1958.
OCT. 10 1958. Edward C. Peterson
ENGINEER

SCALE 1"=20'
OCT. 10 1958.
EDWARD C. PETERSON EGG P.

PLANNING BOARD APPROVAL
UNDER SUBDIVISION CONTROL LAW
NOT REQUIRED.
DATE 10-14-58 BY *Edward J. Halligan*
TOWN COUNSEL
AUTHORIZED AGENT FOR
PLANNING BOARD
TOWN OF CANTON MASS.

136.98
99.43
41.68
847
286.33