

PLAN OF LAND IN
WEYMOUTH, NORFOLK COUNTY, MASS.

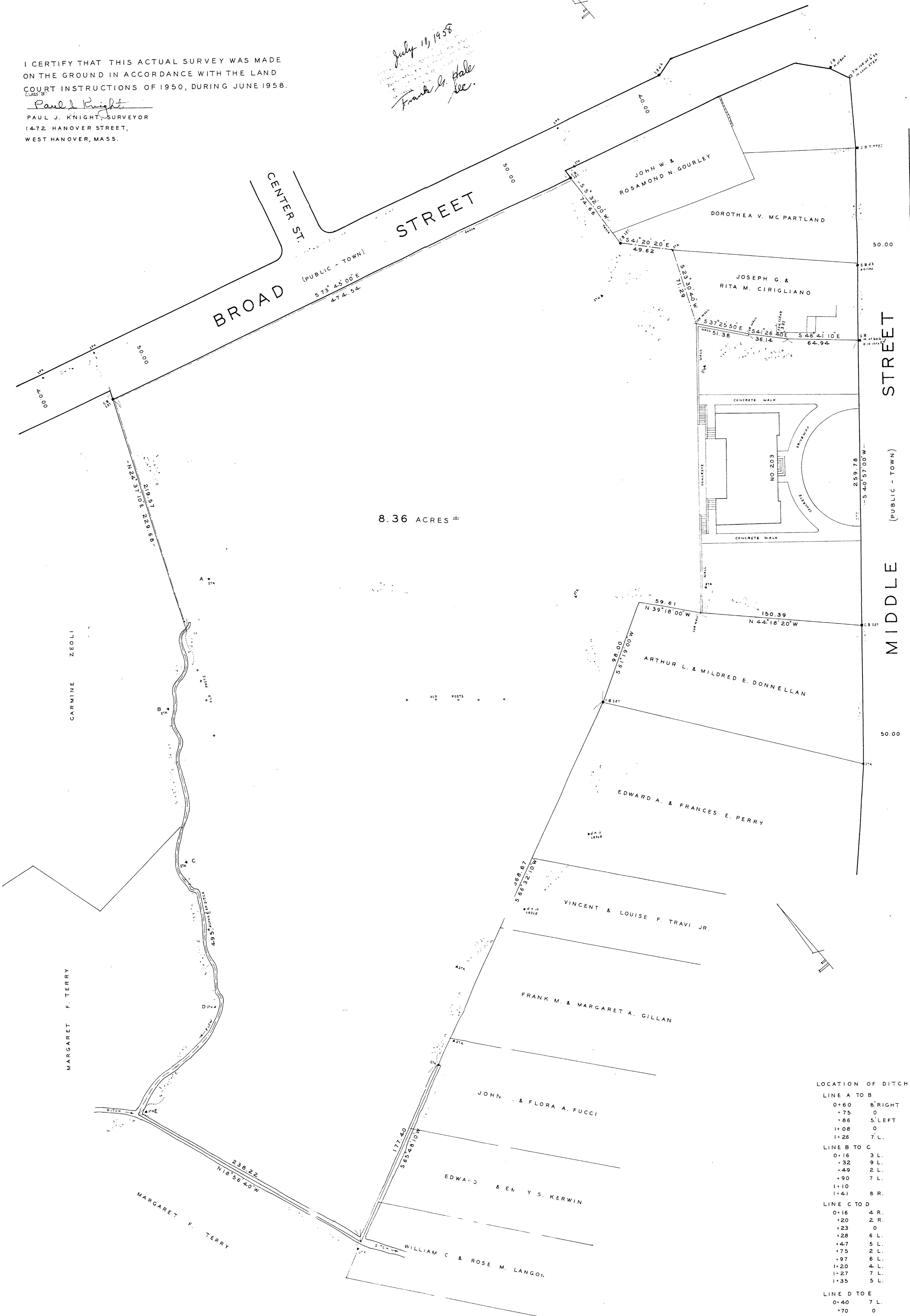
SCALE: 1" = 40' JULY 1, 1958

PAUL J. KNIGHT, SURVEYOR
WEST HANOVER, MASS.

I CERTIFY THAT THIS ACTUAL SURVEY WAS MADE
ON THE GROUND IN ACCORDANCE WITH THE LAND
COURT INSTRUCTIONS OF 1950, DURING JUNE 1958.

Paul J. Knight
PAUL J. KNIGHT, SURVEYOR
1472 HANOVER STREET,
WEST HANOVER, MASS.

July 11, 1958
Frank G. Hale
Sec.



LOCATION OF DITCH &

LINE A TO B	
0+60	8 R
+75	0
+86	5 L
+08	0
+26	7 L
LINE B TO C	
0+16	3 L
+32	9 L
+49	2 L
+90	7 L
+10	0
+41	8 R
LINE C TO D	
0+16	4 R
+20	2 R
+23	0
+28	6 L
+47	5 L
+75	2 L
+97	6 L
+20	4 L
+27	7 L
+35	5 L
LINE D TO E	
0+40	7 L
+70	0
+90	7 R
+18	7 R