

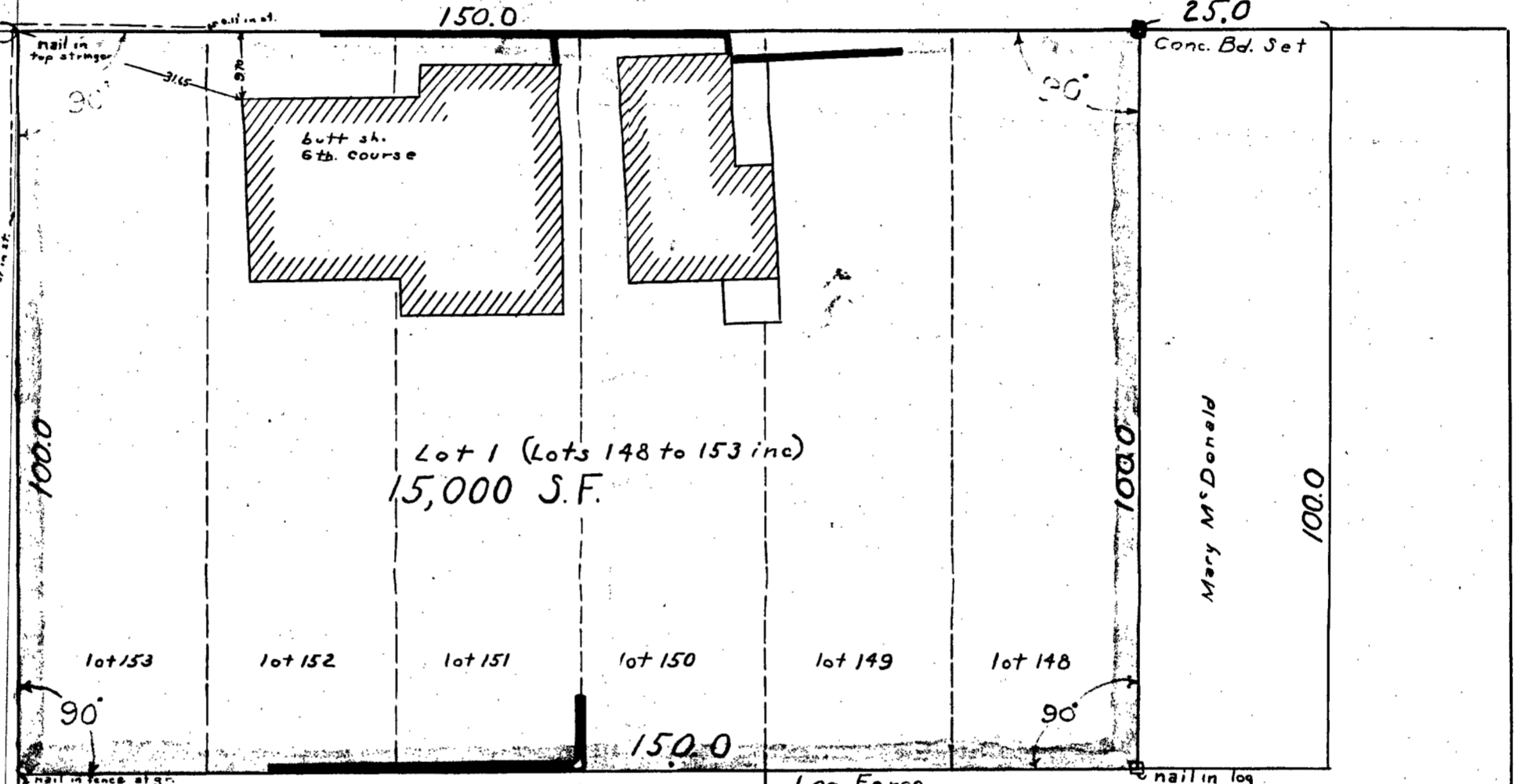
Emma T. Swirkalus

30.0 RIVERBANK (PRIVATE) ROAD 30.0

Ld. Ct. #22155
132.88
D.H. in Conc. Wall
10.91
10.82

BEEBE (PRIVATE) ROAD

CHESELEY (PRIVATE) ROAD



C. Arthur Rambo et al. Hazel M.

30.0

TOWN RIVER BAY

CASE # 17892
James T. Trenholm
Herbert U. Trenholm

CASE # 17892
John S McDonald

Plan of Land in Quincy
Scale 20 feet to an inch
August 12, 1957
Ernest W. Branch Inc. Civil Engineers
11 Adams Building, Quincy

I certify that this actual survey was made on the ground in accordance with Land Court instructions of 1950

Aug. 12, 1957 Robert S Booth Engineer

Approval under Subdivision Control Law not required
Date August 13, 1957
Respectfully,
Director of Planning