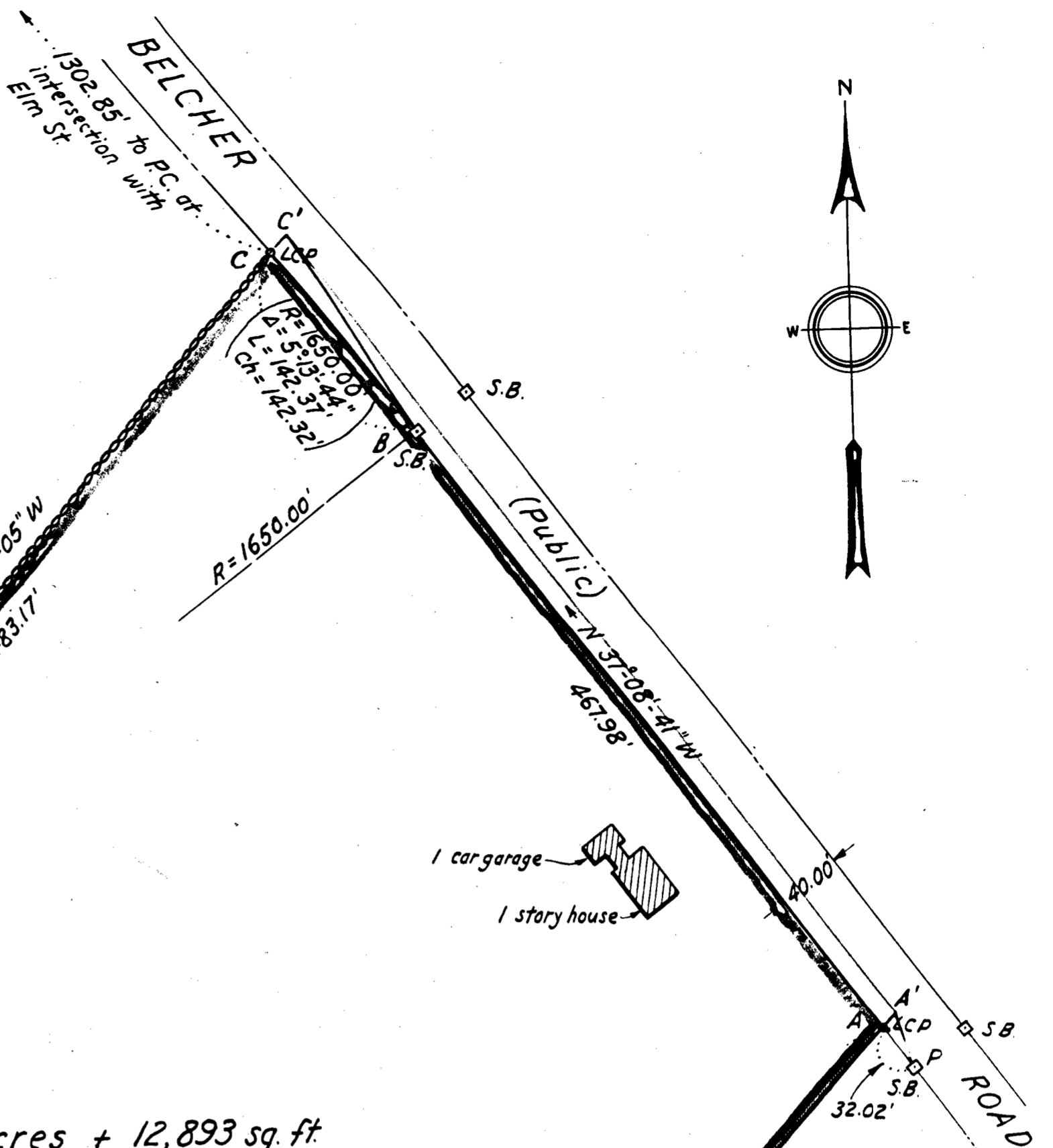
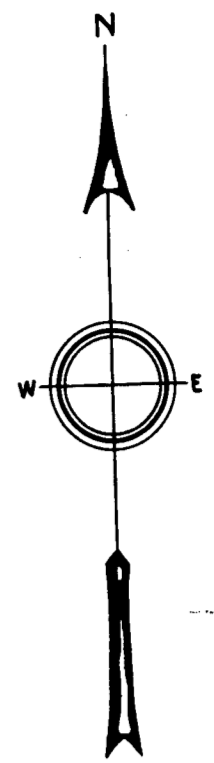


The layout of Belcher Road is shown on a plan filed in the Norfolk County Registry as No. 823-1958 in Plan Book No. 205.

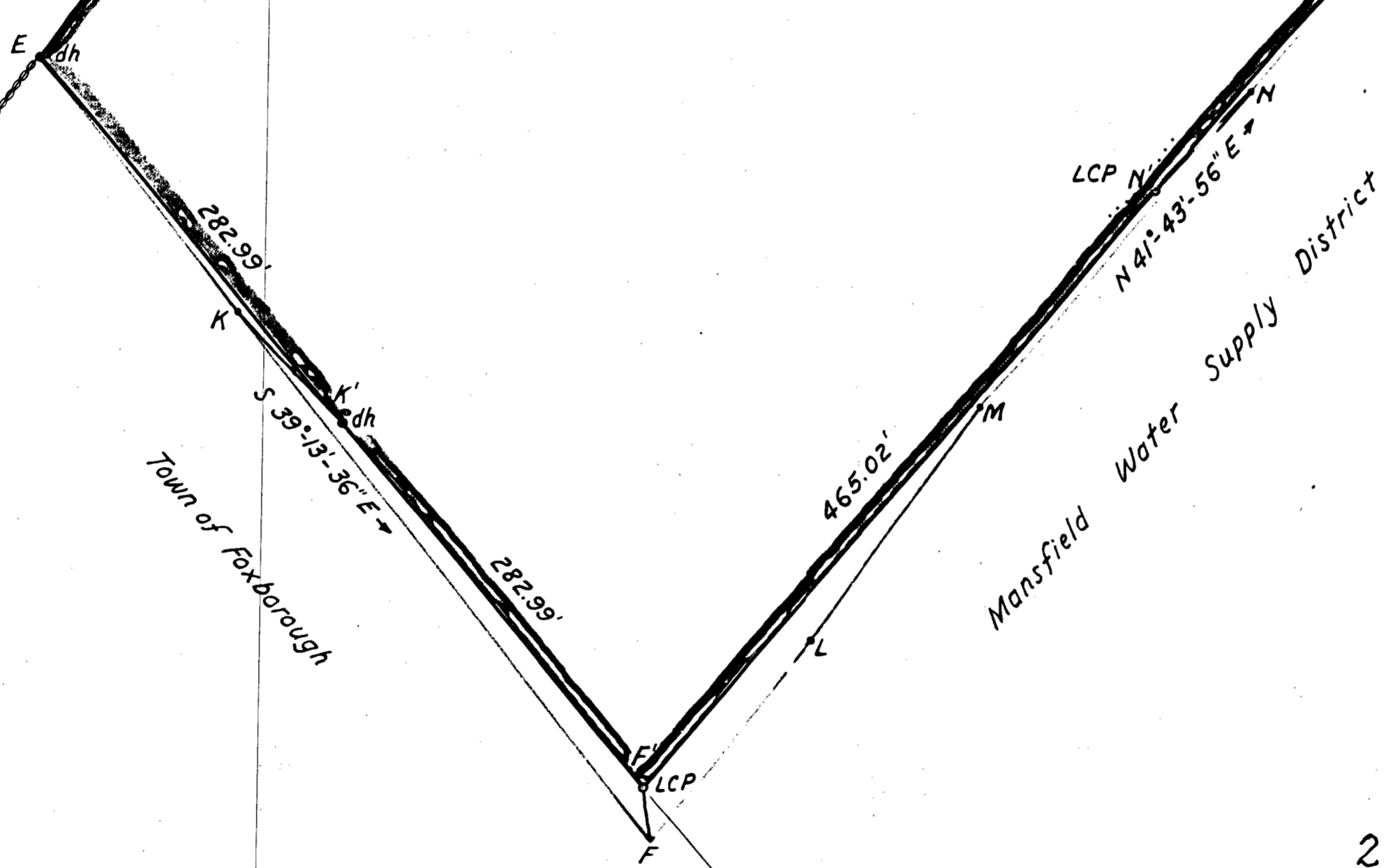


Philip G. Johnson

Drill hole in ledge about 1' beneath surface. 3/8" copper pipe marks point & extends 6" above surface.

William A. Peach
Land Court
Case No. 26814

12 Acres + 12,893 sq. ft.
(12.6403 Acres)



Approval under Subdivision Control Law not required
David K. Blagg
James E. Stanley
John P. Lienesch

Foxborough Planning Board
Date: August 22, 1958.

28581

9-2-58 WES

I certify that this actual survey was made on the ground in accordance with Land Court Instructions of 1950 between May 15, 1958, and June 15, 1958.



John P. Lienesch
Surveyor

Date: Aug. 22, 1958

MAP OF LAND
IN
FOXBOROUGH, MASSACHUSETTS
PROPERTY OF ROBERT VAN BLARCOM
FOXBORO, MASSACHUSETTS
JOHN P. LIENESCH, SURVEYOR
FOXBORO, MASSACHUSETTS
SCALE 1" = 80' AUGUST 1958