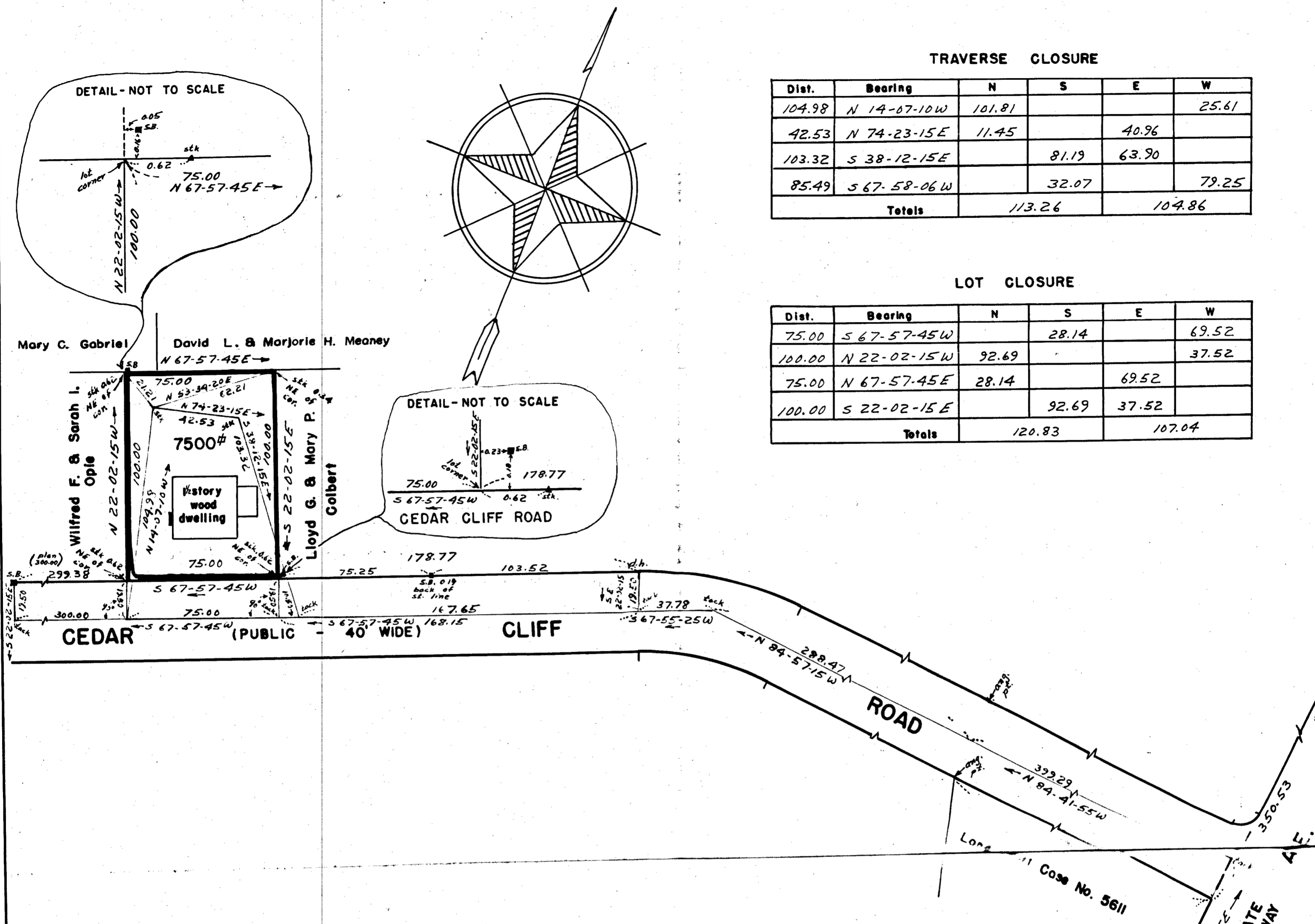


TRAVERSE CLOSURE

Dist.	Bearing	N	S	E	W
104.98	N 14-07-10W	101.81			25.61
42.53	N 74-23-15E	11.45		40.96	
103.32	S 38-12-15E		81.19	63.90	
85.49	S 67-58-06W		32.07		79.25
Totals		113.26		104.86	

LOT CLOSURE

Dist.	Bearing	N	S	E	W
75.00	S 67-57-45W		28.14		69.52
100.00	N 22-02-15W	92.69			37.52
75.00	N 67-57-45E	28.14		69.52	
100.00	S 22-02-15E		92.69	37.52	
Totals		120.83		107.04	



BRAINTREE PLANNING BOARD

Approval under the subdivision control law not required.

Date July 28 1958

Joseph M. Magaraci
Edward J. Kane
William J. Dyer
Robert J. Galambos
Fredrick J. Ryan

I certify that this actual survey was made on the ground in accordance with the Land Court Instructions of 1950 between June 23, 1958 and July 14, 1958.

Date July 14, 1958

John J. Regan
 Surveyor for Everett M. Brooks Co.
 259 Walnut St. Newtonville

PLAN OF LAND
 IN
 BRAINTREE MASS.

SCALE 1 IN = 40 FT
 EVERETT M. BROOKS CO.
 NEWTONVILLE & WAYLAND

JULY 14, 1958
 CIVIL ENGRS
 MASS.

28579
 9-2-58
 WES