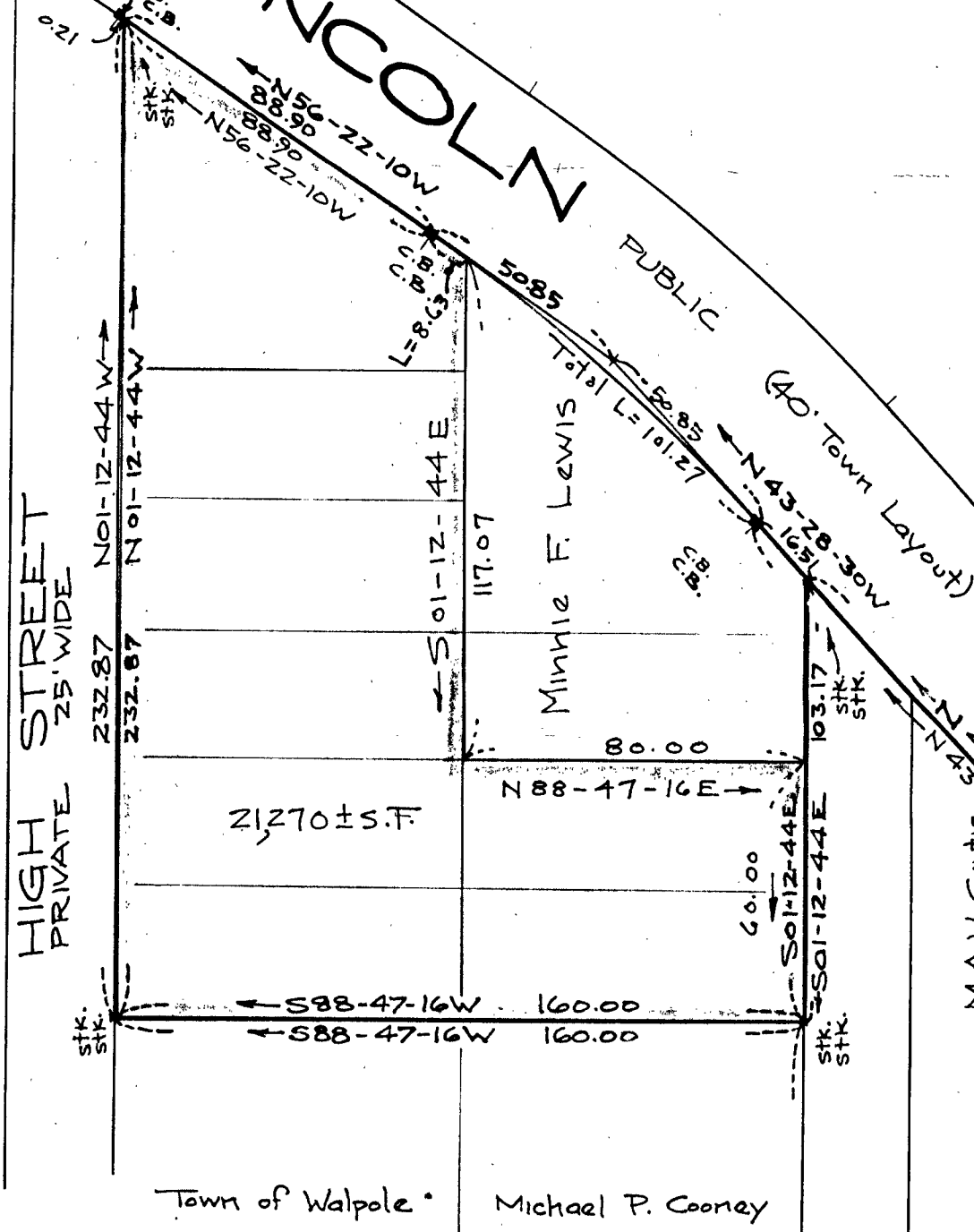
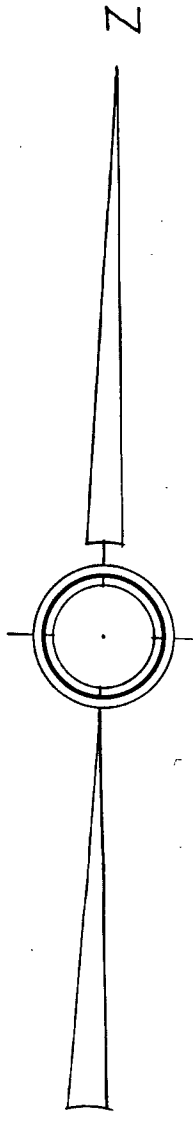


GRANITE ST. (PUBLIC)

LINCOLN ROAD

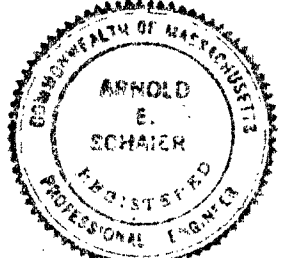


DIVISION STREET PRIVATE 25' WIDE

PLAN OF LAND
WALPOLE, MASS.
Scale: 1 in. = 40 ft.
April 11, 1958
Arnold E. Schajer, C.E.
Norwood Engineering Co. Inc.
245 Walpole St.-Norwood, Mass.

I certify that this actual survey was made on the ground in accordance with the Land Court instructions of 1950 between April 1 and April 8, 1958.
April 9, 1958
Arnold E. Schajer

Approval under Sub-division Control Law not required

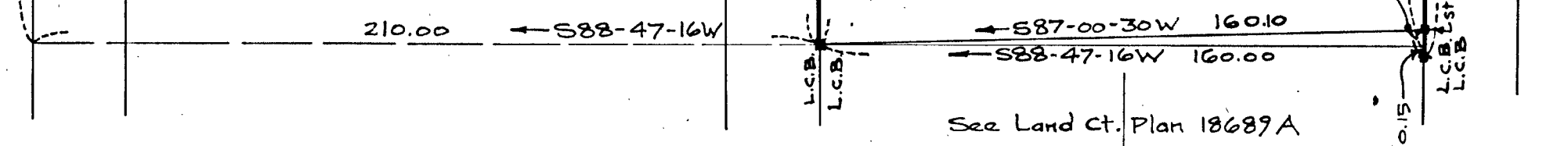


Planning Board - Town of Walpole

DIVISION STREET PRIVATE 25' WIDE

PLEASANT STREET PRIVATE 25' WIDE

SUMMER STREET PRIVATE 25' WIDE



See Land Ct. Plan 18689A