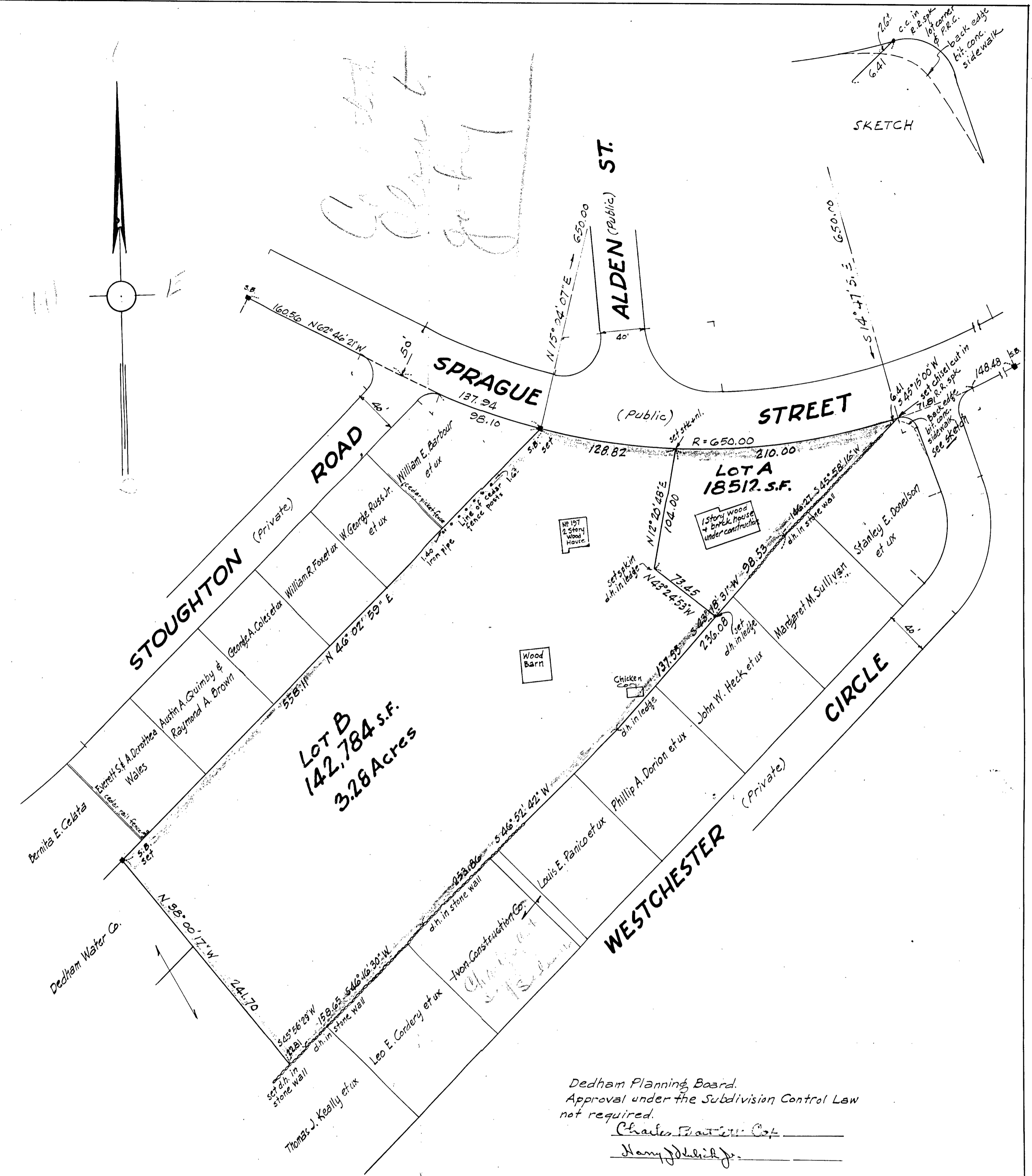
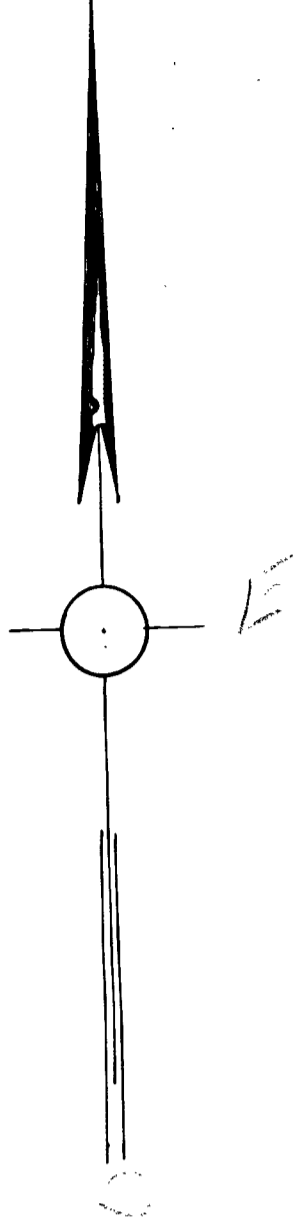
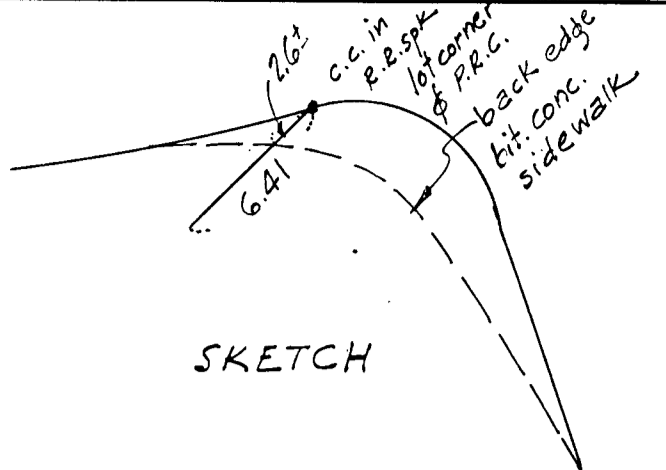


Handwritten notes:
 172
 173
 174



Bearing	Distance	Latitudes N S	Departures E W
N 15° 04' 07" E	650.00	627.65	168.98
S 14° 47' 51" E	650.00	628.44	166.01
S 45° 15' 00" W	6.41	4.51	4.55
S 45° 58' 16" W	146.27	101.66	105.17
S 43° 18' 31" W	236.08	171.79	161.93
S 46° 52' 42" W	253.86	173.53	185.29
S 46° 16' 30" W	158.65	109.66	114.65
S 45° 56' 29" W	22.81	15.86	16.39
N 38° 00' 17" W	241.70	190.45	148.82
N 46° 02' 59" E	558.11	387.35	401.81
		1205.45	736.80

Note: Bearing carried from Land Court #7905 pending.

**PLAN OF LAND
 DEDHAM, MASS.**

Scale ~ 1 in. = 60 ft. Jan. 2, 1958
 John F. Hennessy, Civil Eng'r.
 4 Cypress St. Brookline, Mass.



I certify that this actual survey was made on the ground in accordance with the Land Court Instructions of 1950.

John F. Hennessy Engineer