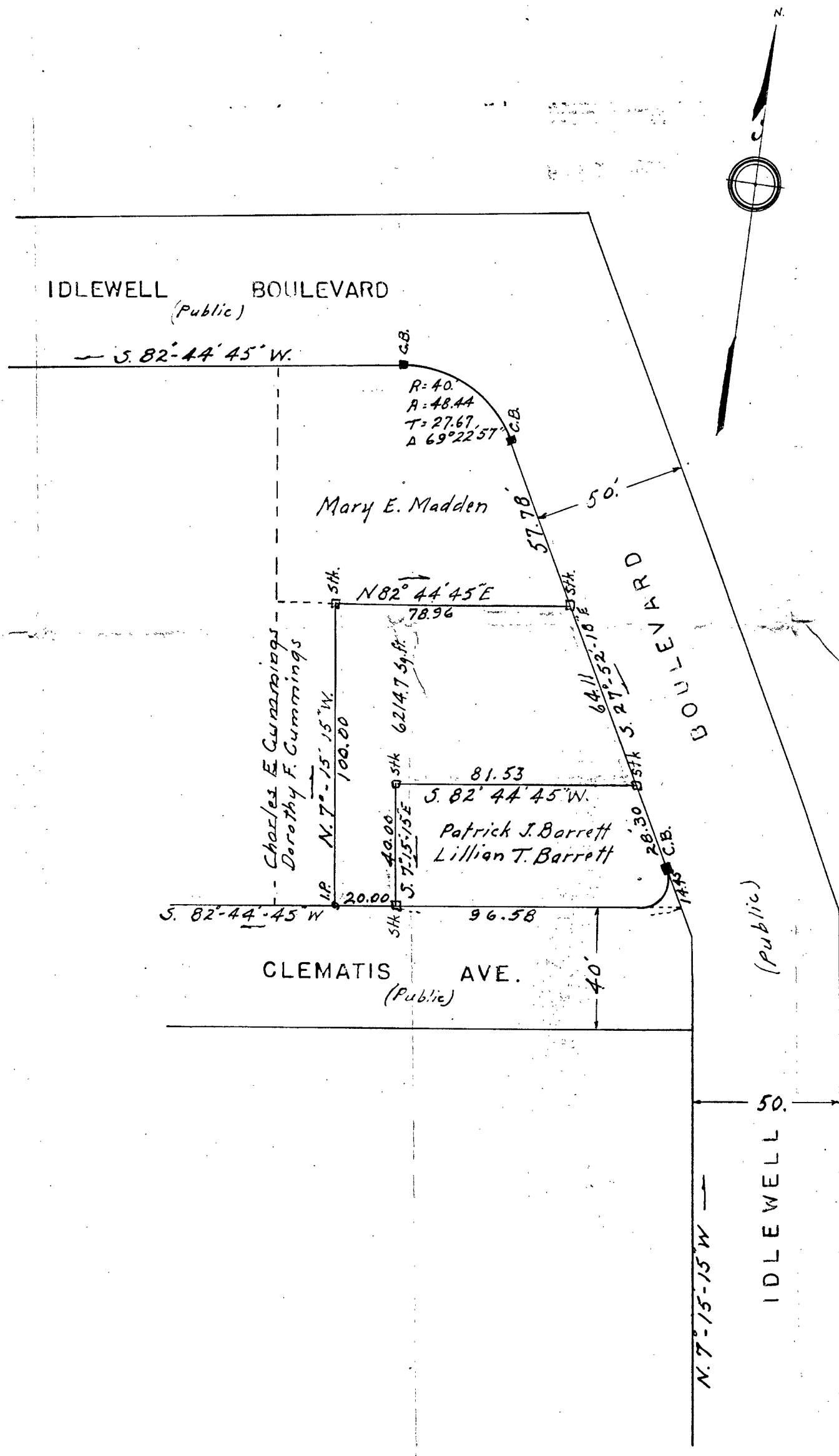
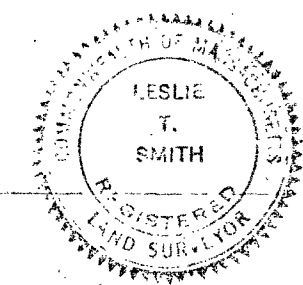


Int. Ang.	Bearing	Dist.	Latitude		Departure	
			N.	S.	E.	W.
110-37-03	S. 27° 52' 18" E	64.11		56.673	29.971	
69-22-57	S. 82° 44' 45" W	81.53		10.295		80.878
270-00	S. 7° 15' 15" E	40.00		39.680	5.051	
90-00	S. 82° 44' 45" W	20.00		2.525		19.840
90-00	N. 7° 15' 15" W	100.00	99.200			12.627
90-00	N. 82° 44' 45" E	78.96	9.970		78.328	
			109.170	109.173	113.350	113.345



PLAN OF LAND IN
WEYMOUTH MASS.
SURVEYED FOR KENNETH SOPER
BRAINTREE MASS.
SCALE 1" = 40' MAY 8, 1958
LESLIE T. SMITH C.E.
289 FRANKLIN ST. WHITMAN MASS.



Approval under Subdivision Control
Law not required.
Weymouth Planning Board.

I certify that this actual survey was made on
the ground in accordance with the Land
Court instructions of 1950 on or between
April 21, 1958. and April 24, 1958
MAY 8, 1958.
Leslie T. Smith