

Plan of Land in
DEDHAM, MASS.

Scale: 1 inch = 20 feet Pilling Engineering Co., Inc.
 26 Norfolk St., Dedham, Mass.

June 20, 1958

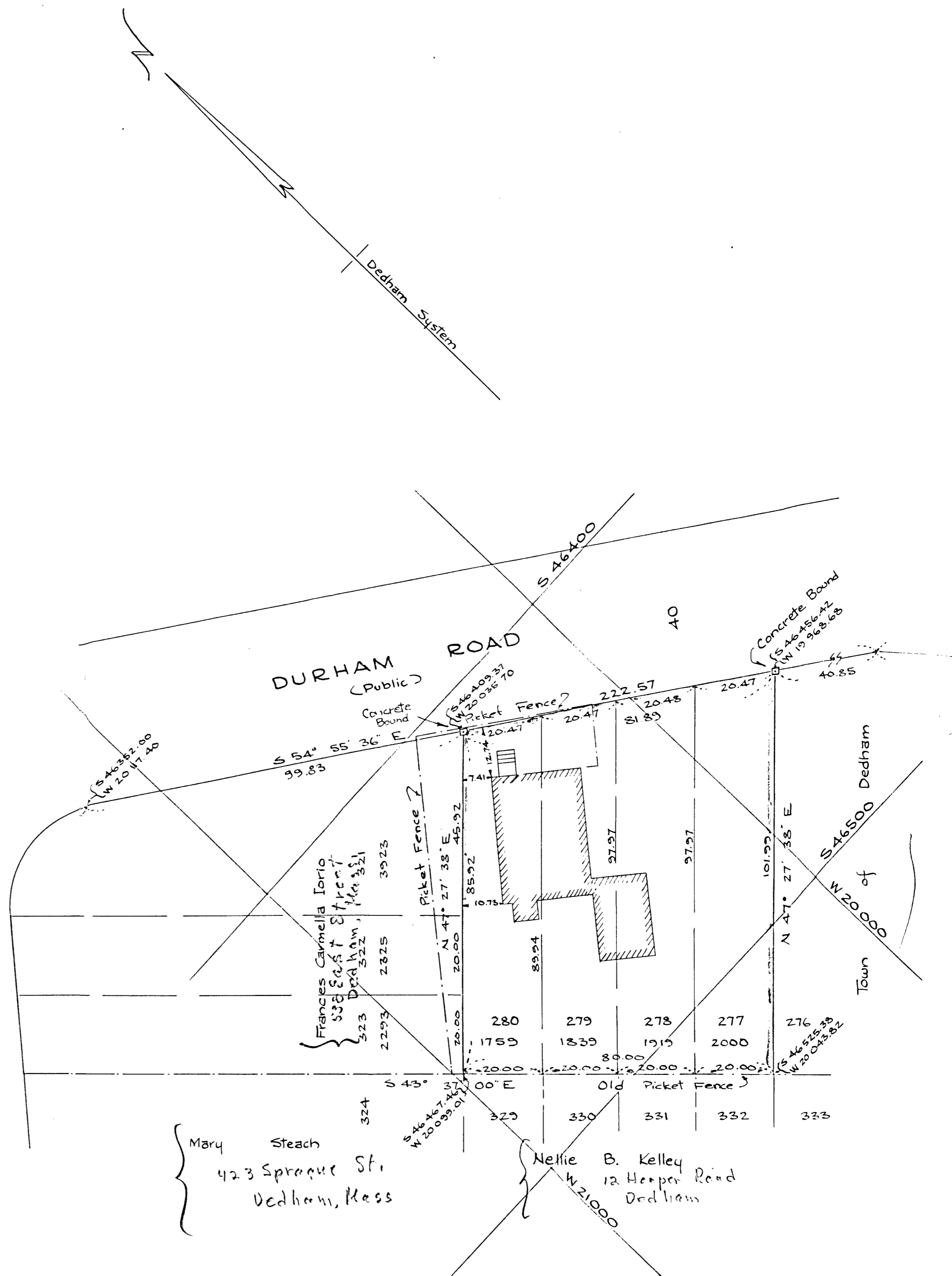
Approval under Subdivision
 Control Law not required

DEDHAM PLANNING BOARD

I hereby certify that this plan was made in
 accordance with Land Court Instructions of 1950
 from a survey made on the ground April 29, 1958

Howard L. Millard
 Civil Engineer

SPRAGUE STREET



28513 Reg.

NOTE: These lots are in "Readville Manor".