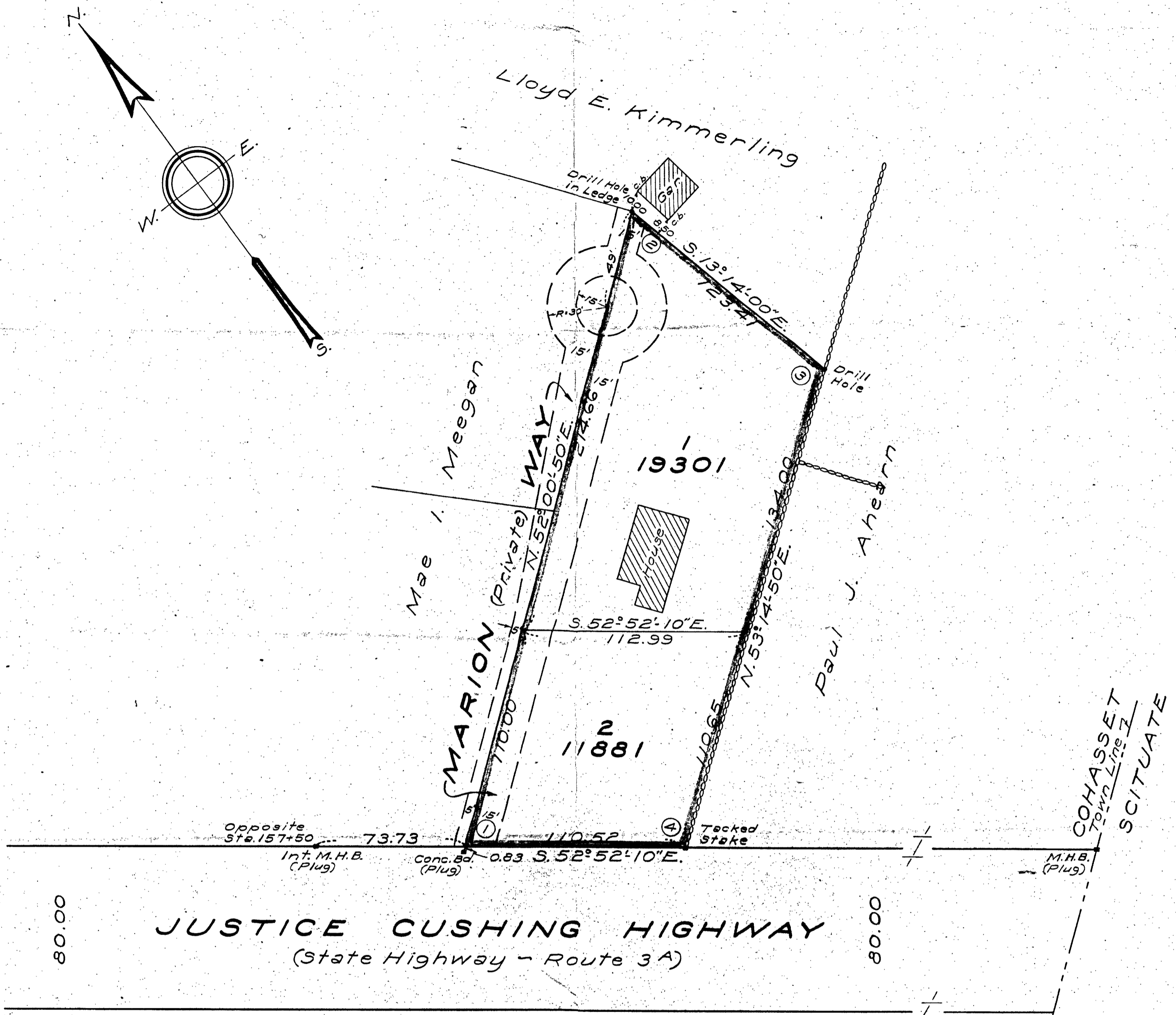


628 90580 #



Class A Survey

Sta.	Interior Angle	Defl. Angle	Azimuth	Dist.	+Sine	-Sine	+Cos.	-Cos.
1	75° 07' 00"	104° 53' 00"	232° 00' 50"	324.66		255.88		199.82
2	65° 14' 50"	114° 45' 10"	346° 46' 00"	123.41		28.25	120.13	
3	113° 31' 10"	66° 28' 50"	53° 14' 50"	244.65	196.02		146.39	
4	106° 07' 00"	73° 53' 00"	127° 07' 50"	110.52	88.11			66.71
	360° 00' 00"	360° 00' 00"			284.13	284.13	266.52	266.53

I certify that this actual survey was made on the ground in accordance with the Land Court instructions of 1950 on March 27, 1958.

March 28, 1958. *William W. Perkins* Eng'r, Hingham, Mass.

APPROVAL UNDER THE SUBDIVISION CONTROL LAW NOT REQUIRED. COHASSET PLANNING BOARD

PLAN OF LAND IN COHASSET, MASS.

Scale: 40 feet to an inch. March 28, 1958. Lewis W. Perkins & Son, Eng'rs., Hingham, Mass.