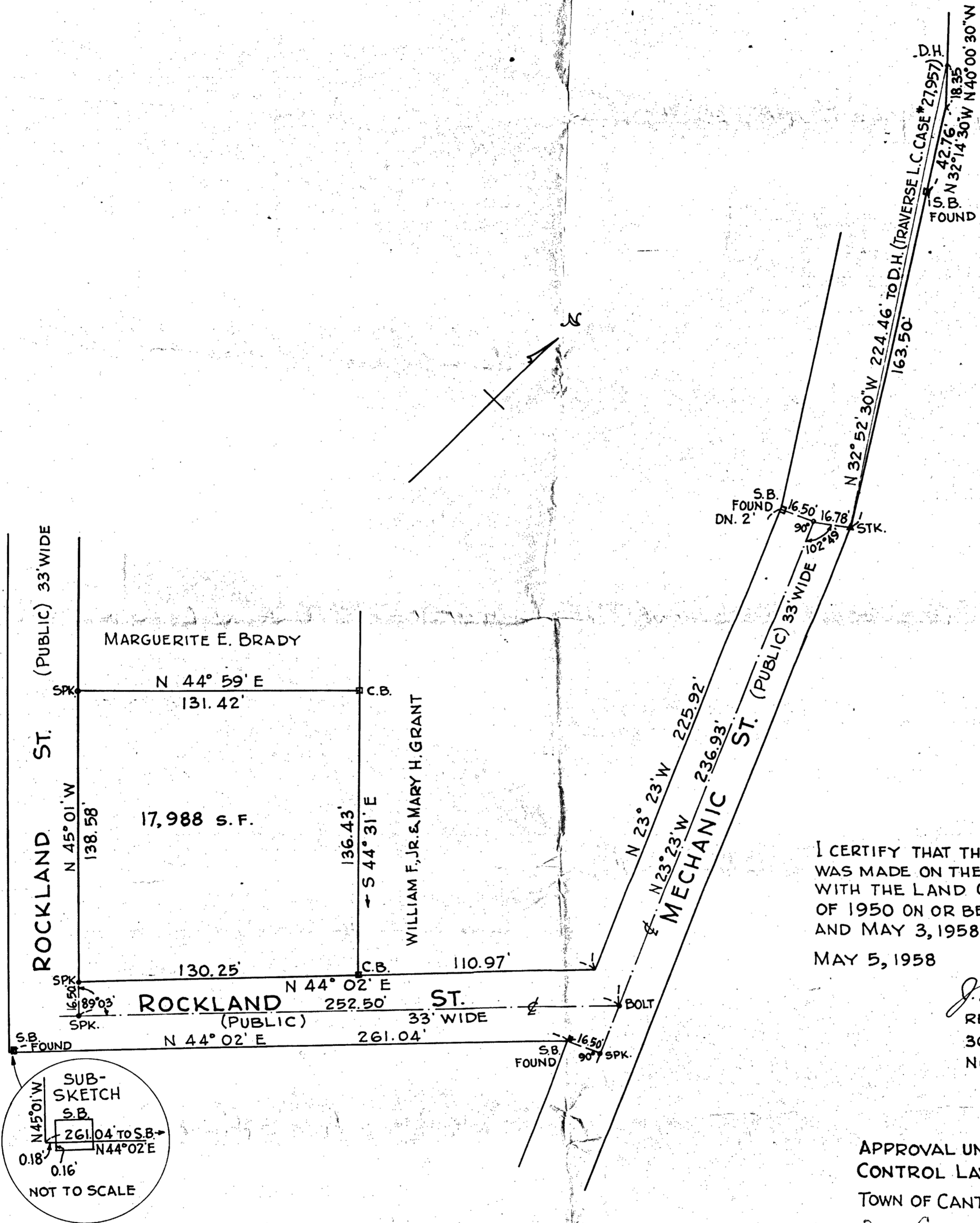


PLAN OF LAND  
IN  
**CANTON, MASS.**

SCALE: 1"=40' MAY 5, 1958

J. E. BAMBER, REG. PROF. ENGR.  
NORWOOD, MASS.

LAND COURT  
CASE # 27,957



I CERTIFY THAT THIS ACTUAL SURVEY  
WAS MADE ON THE GROUND IN ACCORDANCE  
WITH THE LAND COURT INSTRUCTIONS  
OF 1950 ON OR BETWEEN APRIL 19, 1958  
AND MAY 3, 1958.  
MAY 5, 1958

*J. Edward Bamber*  
REG. PROF. ENGR. #6664  
365 WALPOLE ST.  
NORWOOD, MASS.

APPROVAL UNDER SUBDIVISION  
CONTROL LAW NOT REQUIRED:  
TOWN OF CANTON PLANNING BOARD  
By: *Eugene J. Halligan, Town Council*  
*Authorized Agent*  
DATE: MAY, 12, 1958

