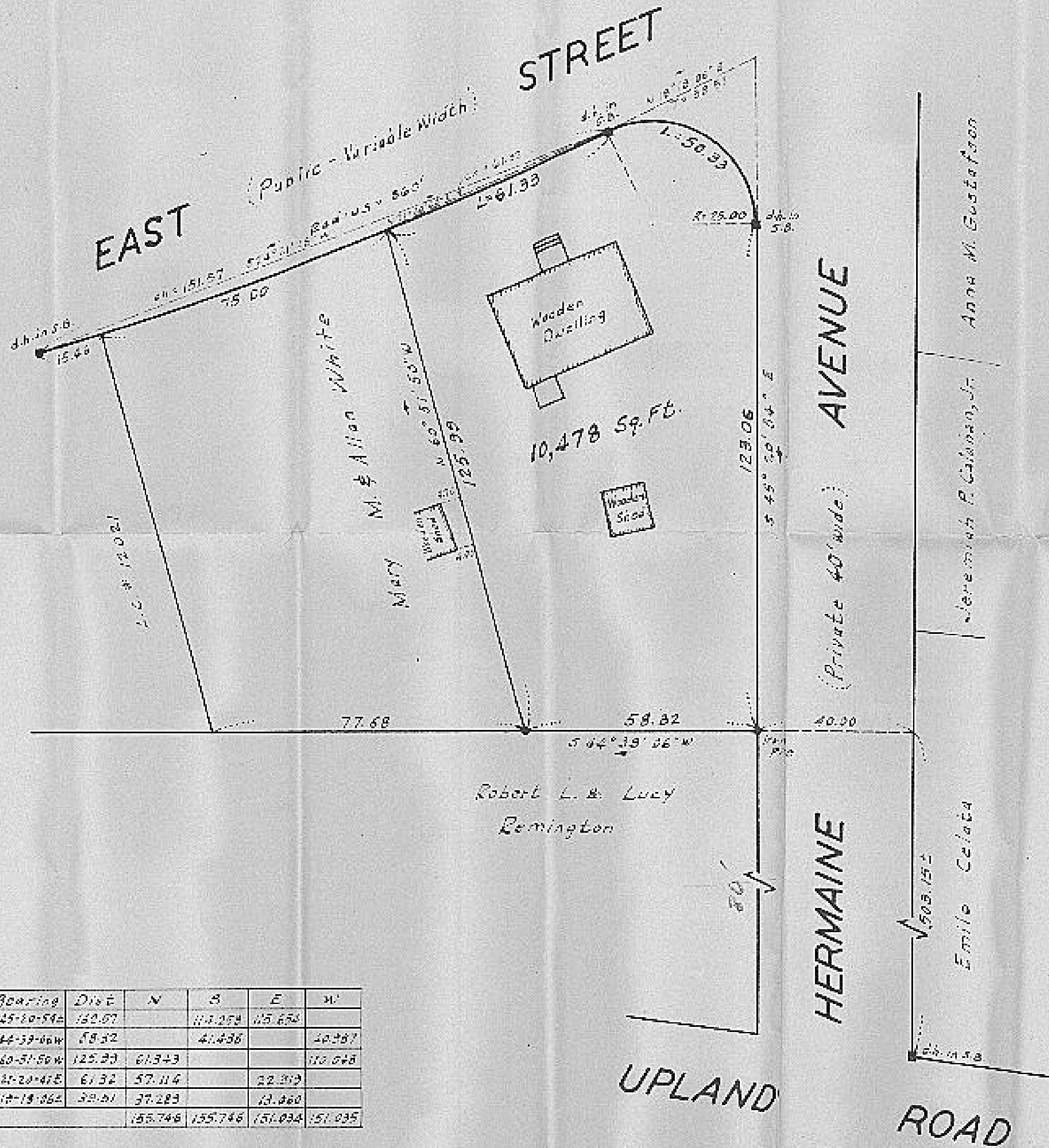


3039-118

42-1991



PLAN OF LAND
IN
DEDHAM, MASS.

Scale 1 in = 20 ft. April 22, 1958

Dana R. Perkins
Registered Land Surveyor
11 Pemberton Sq.
Boston 8, Mass.

I certify that this survey was made
on the ground in accordance with the Land
Court Instructions of 1950 on April 21, 1958

Dana R. Perkins
Dana R. Perkins Reg. Land Surveyor # 3595

Bearing	Dist	N	S	E	W
S45°10'54"E	150.07		114.258	105.656	
S44°59'06"W	78.32		41.436		40.987
N60°51'56"W	125.33	61.343			110.048
N37°29'41"E	61.32	57.114		32.309	
N17°18'06"E	39.01	37.283		13.080	
		155.746	155.746	151.034	151.035