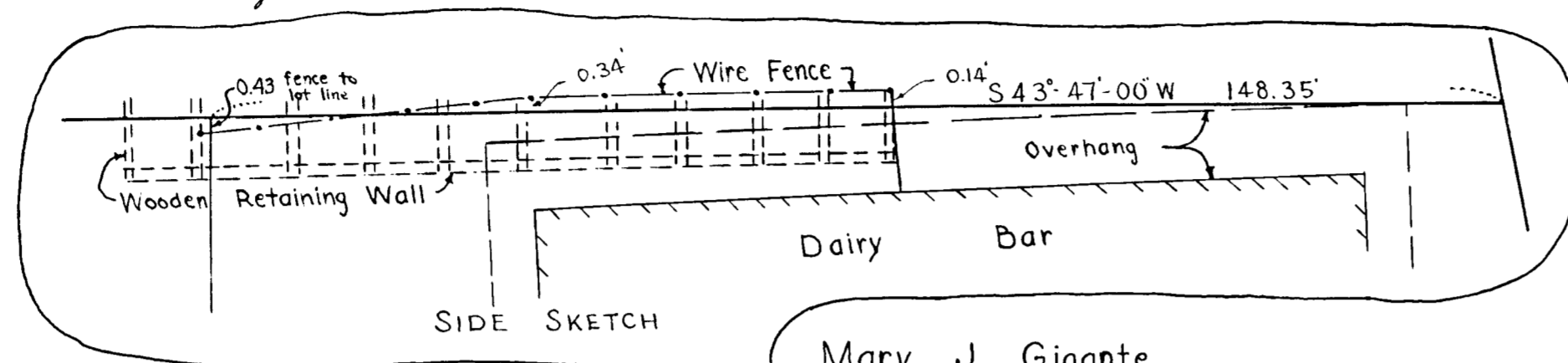
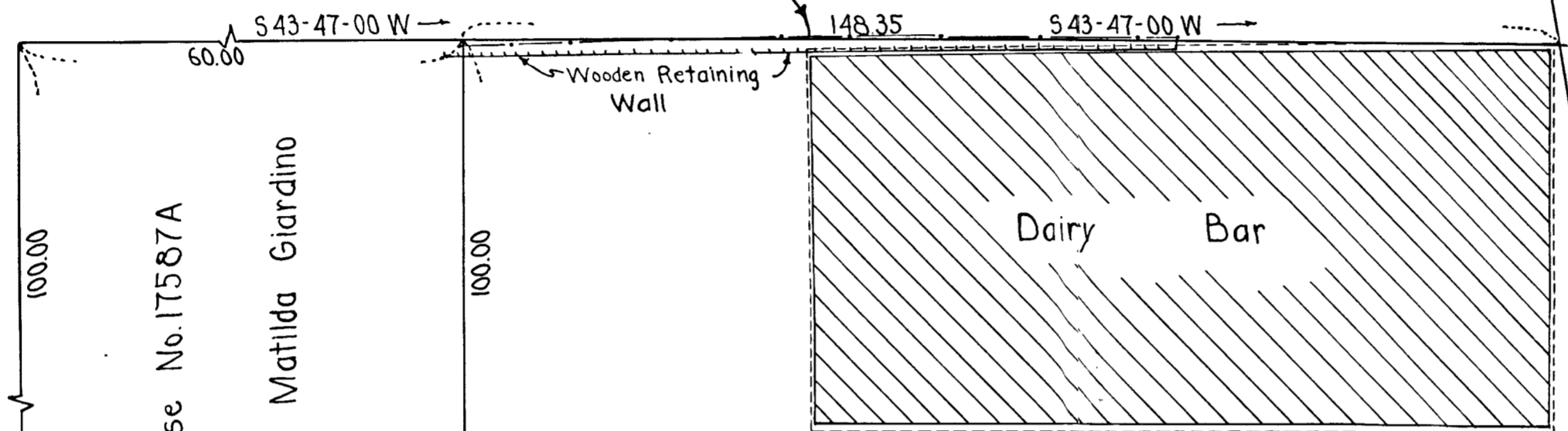


I certify that this plan was made in accordance with the Land Court requirements of 1950 from an actual survey on the ground. *Kenneth E. McIntyre*

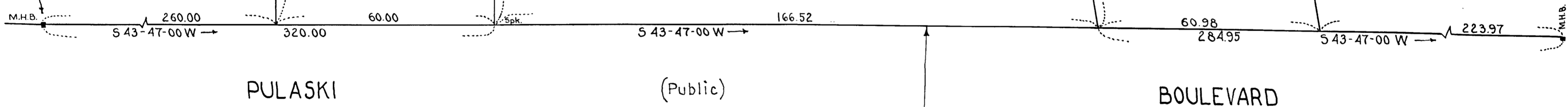
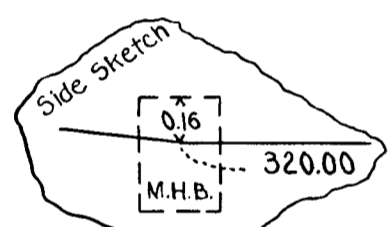
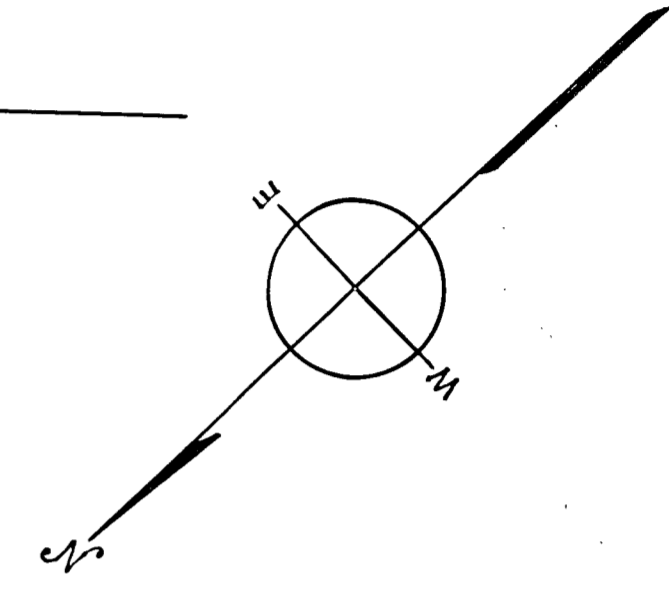


L.C. Case No 20054

Mary J. Gigante



AREA = 15,744 S.F.



PLAN OF LAND
IN
BELLINGHAM, MASS.

Scale 1"=20'
Dec. 11, 1957
McIntyre + Johnson, Reg. Civil Engineers
+ Reg. Land Surveyors - Walpole, Mass.

28388

5-9-58

See PL 40
Norton Co.

TOWN OF BELLINGHAM

Windsor D. Bates Chairman
Robert J. ...
Henry A. ...
Edward J. ...
Edmund J. ...

FEB. 20, 1958