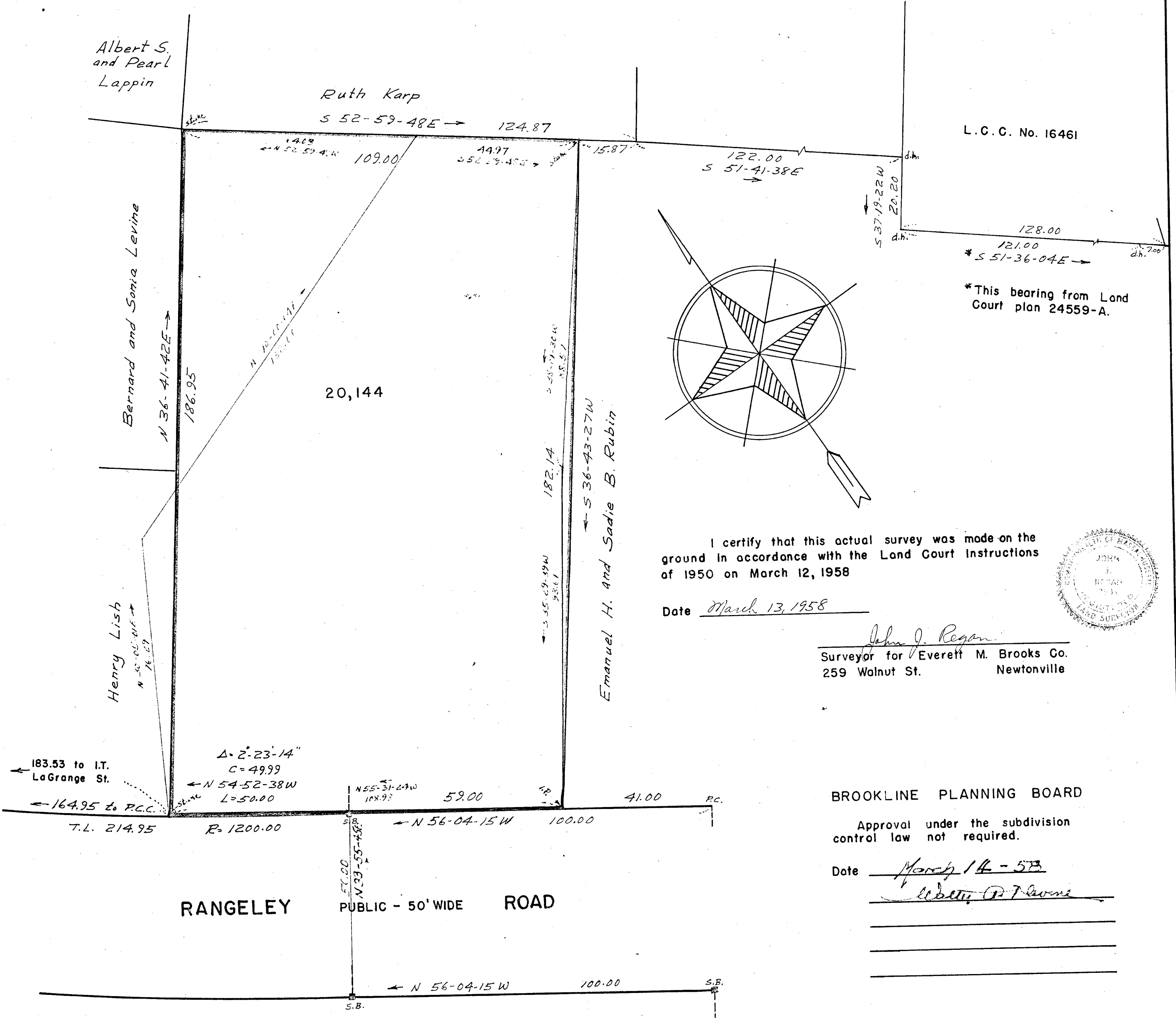


LOT CLOSURE

Dist.	Bearing	N	S	E	W
59.00	N 56-04-15W	32.932			48.954
49.99	N 54-52-38W	28.761			40.888
186.95	N 36-41-42E	149.898		111.710	
109.00	S 52-59-48E		65.602	87.045	
182.14	S 36-43-27W		145.989		108.913
Totals		211.591		198.755	

TRAVERSE CLOSURE

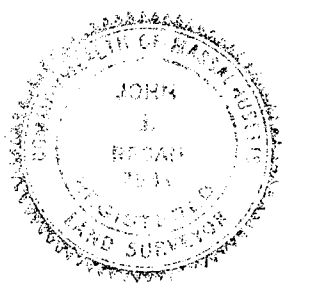
Dist.	Bearing	N	S	E	W
44.97	S 52-59-48E		27.06	35.91	
88.57	S 38-01-30W		69.77		54.56
93.61	S 35-29-39W		76.22		54.35
108.98	N 55-31-24W	61.69			29.84
76.29	N 30-05-01E	66.01		38.24	
132.60	N 70-00-04E	45.35		124.60	
Totals		173.05		198.75	



I certify that this actual survey was made on the ground in accordance with the Land Court Instructions of 1950 on March 12, 1958

Date March 13, 1958

John J. Regan  
 Surveyor for Everett M. Brooks Co.  
 259 Walnut St. Newtonville



BROOKLINE PLANNING BOARD

Approval under the subdivision control law not required.

Date March 14 - 58

Albert P. Thomas

PLAN OF LAND  
 IN  
 BROOKLINE MASS.

SCALE 1 IN = 20 FT  
 EVERETT M. BROOKS CO.  
 NEWTONVILLE & WAYLAND

MARCH 13, 1958  
 CIVIL ENGRS  
 MASS.