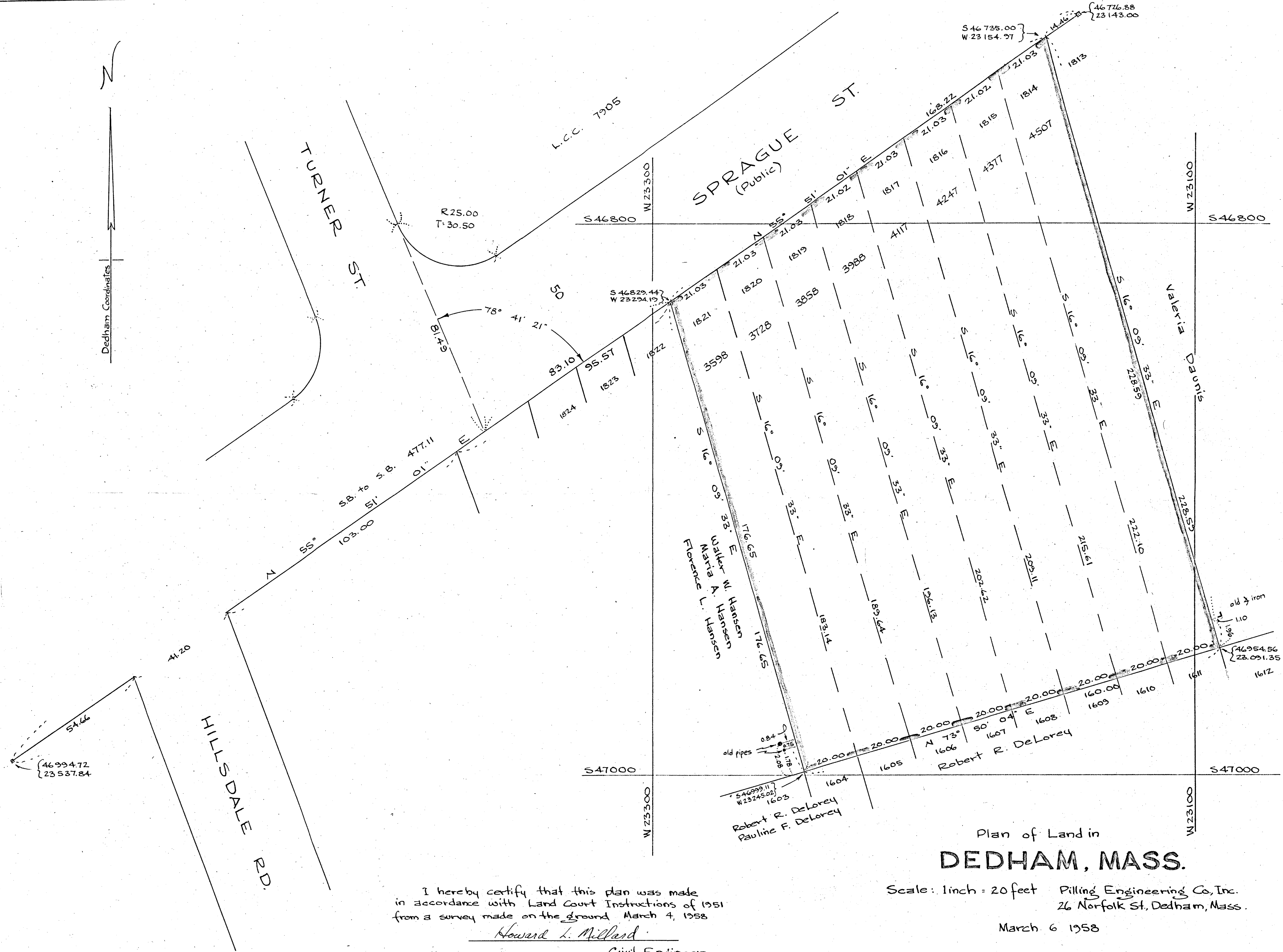


Dedham Coordinates



I hereby certify that this plan was made
 in accordance with Land Court Instructions of 1951
 from a survey made on the ground March 4, 1958

Howard L. Millard
 Civil Engineer

Plan of Land in
DEDHAM, MASS.

Scale: 1 inch = 20 feet Pilling Engineering Co., Inc.
 26 Norfolk St., Dedham, Mass.

March 6 1958