

# TRAVERSE

Bearing	Distance	N <sup>+</sup>	S <sup>-</sup>	E <sup>+</sup>	W <sup>-</sup>
N60°02'00"W	106.29	53.09	—	—	92.08
N29°58'00"E	100.00	86.63	—	49.95	—
S60°02'00"E	93.54	—	46.72	81.03	—
S22°42'00"W	100.81	—	93.00	—	38.90
Total		139.72	139.72	130.98	130.98

Plan of Land  
**RANDOLPH, MASS.**  
 Scale 1"=20' June 30, 1956  
 L.W. DeGelle Surveyors, Inc.  
 Civil Engineers  
 1191 North Main St., Randolph

Approved: Randolph Zoning Appeal Board:

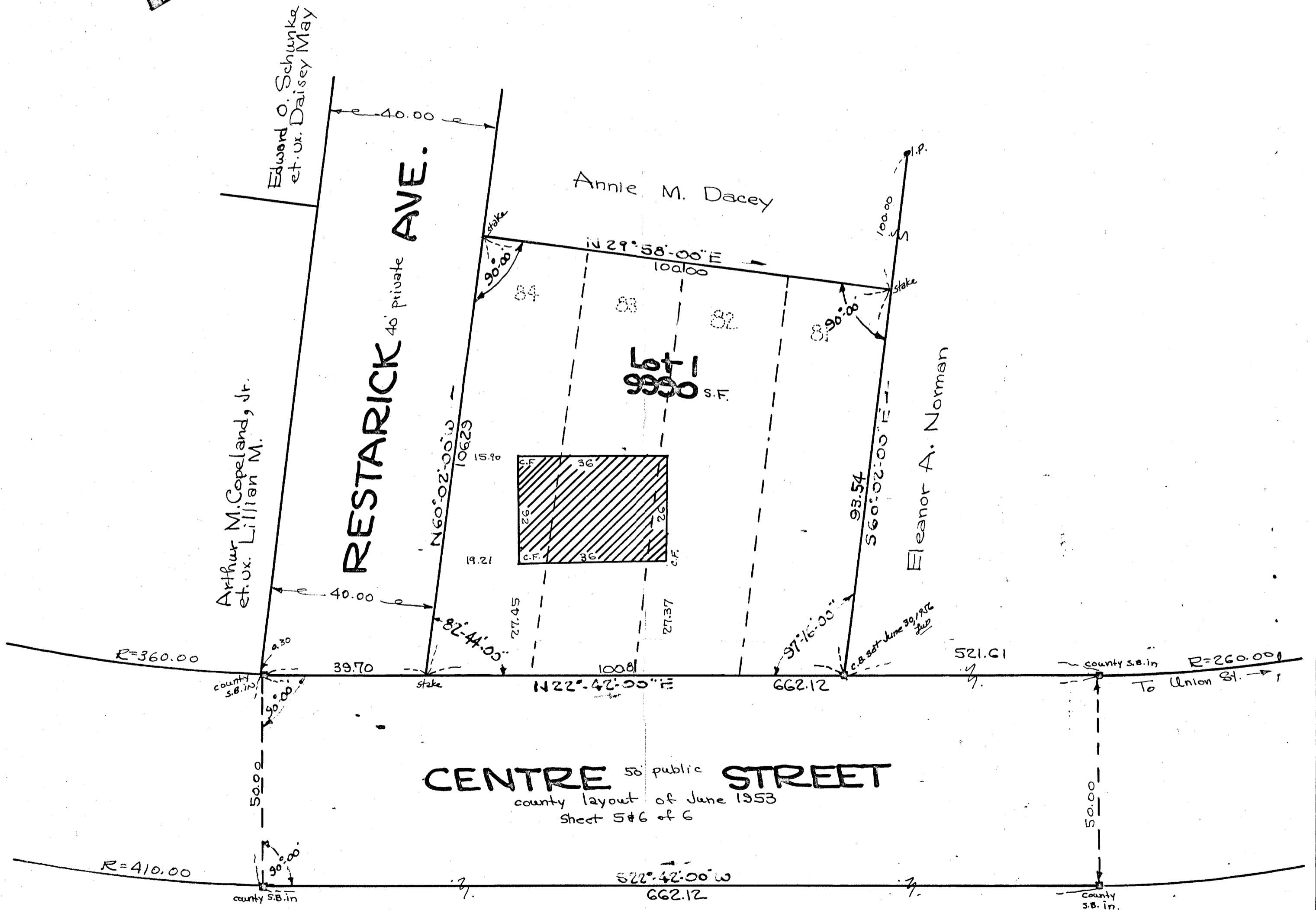
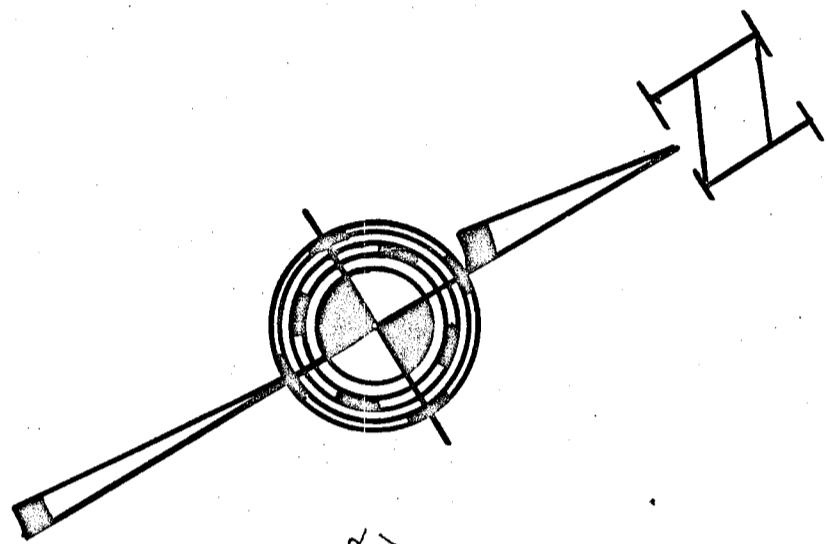
Chairman: \_\_\_\_\_

\_\_\_\_\_

\_\_\_\_\_

\_\_\_\_\_

Date: \_\_\_\_\_



I certify that this actual survey was made on the ground in accordance with the Land Court Instructions of 1950 on June 30, 1956.  
 June 30, 1956 L. W. DeGelle  
 Surveyor