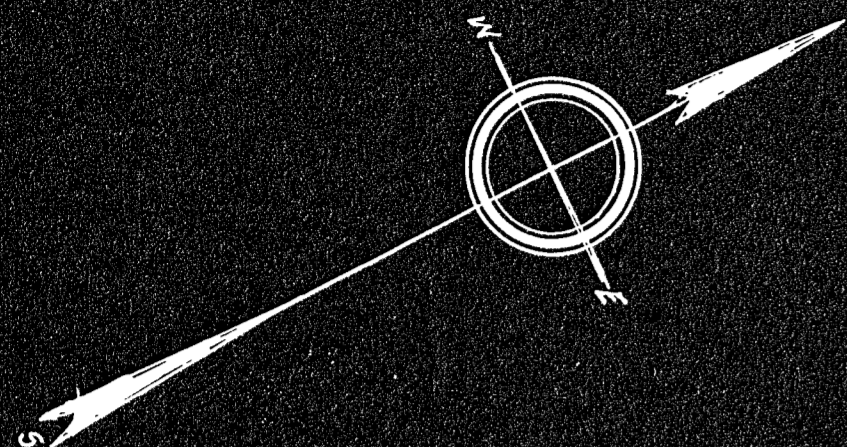


I certify that this actual survey was made on the ground in accordance with the Land Court instructions of 1950.

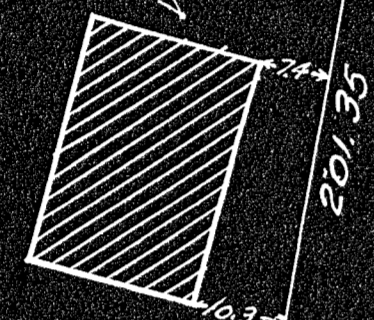
Date November 1953

Alexander E. Manning  
10 Walnut Street  
Milton, Mass.



Moody

Frederick V & Mary L. Beaton  
189.13



Robert

37303 SQ. FT.

ATHERTON (PUBLIC) STREET

(Fire) Town Department (Milton)

BRADLEE ROAD  
Public - 60' Wide

BLUE HILL AVENUE  
(Public - State Highway - Route 138)

Massachusetts Highway Bound

Massachusetts Highway Bound

ATHERTON ST.  
Public - 33' Wide

APPROVAL UNDER THE SUBDIVISION CONTROL LAW NOT REQUIRED.  
DATE January 16, 1958  
Alexander E. Manning  
FOR THE MILTON PLANNING BOARD

PLAN OF LAND IN MILTON-MASS.  
January-1958 Scale: 1 in = 20 ft.  
Alexander E. Manning Town Engineer

