

Locus TRAVERSE

Bearing	Dist.	E ⁺	W ⁻	N ⁺	S ⁻
N23°38'40"E	98.00	39.30	—	89.77	—
S64°04'00"E	75.06	67.50	—	—	32.83
S23°38'40"W	95.00	—	38.10	—	87.02
NG6°21'20"W	75.00	—	68.70	30.08	—
Totals	343.06	106.80	106.80	119.85	119.85

Lot 1 does not meet minimum lot size requirements
Randolph Planning Board

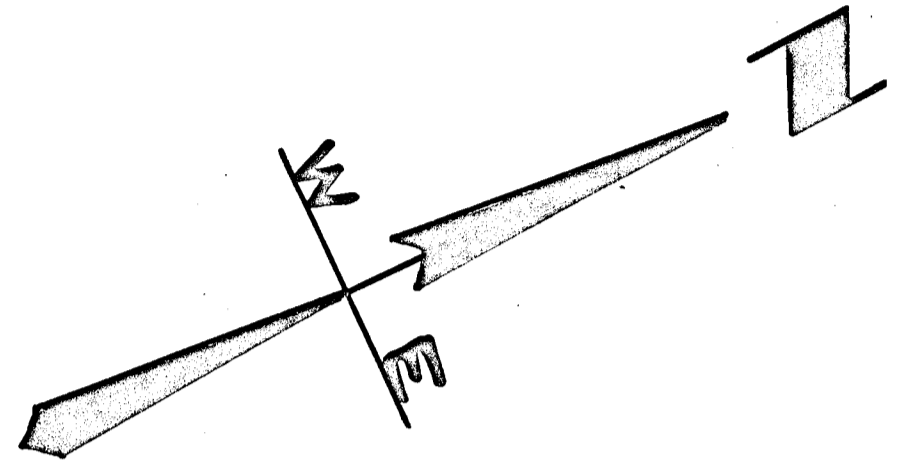
Raymond J. Hall
Joseph W. Curran
Leo J. & Nell

PLAN OF LOT IN
RANDOLPH, MASS..
Scale 1"=20' Jan. 13, 1958
L.W. DeCelle Surveyors, Inc.
Civil Engineers
285 Union St., Randolph

Approved: Randolph Zoning Appeal Board

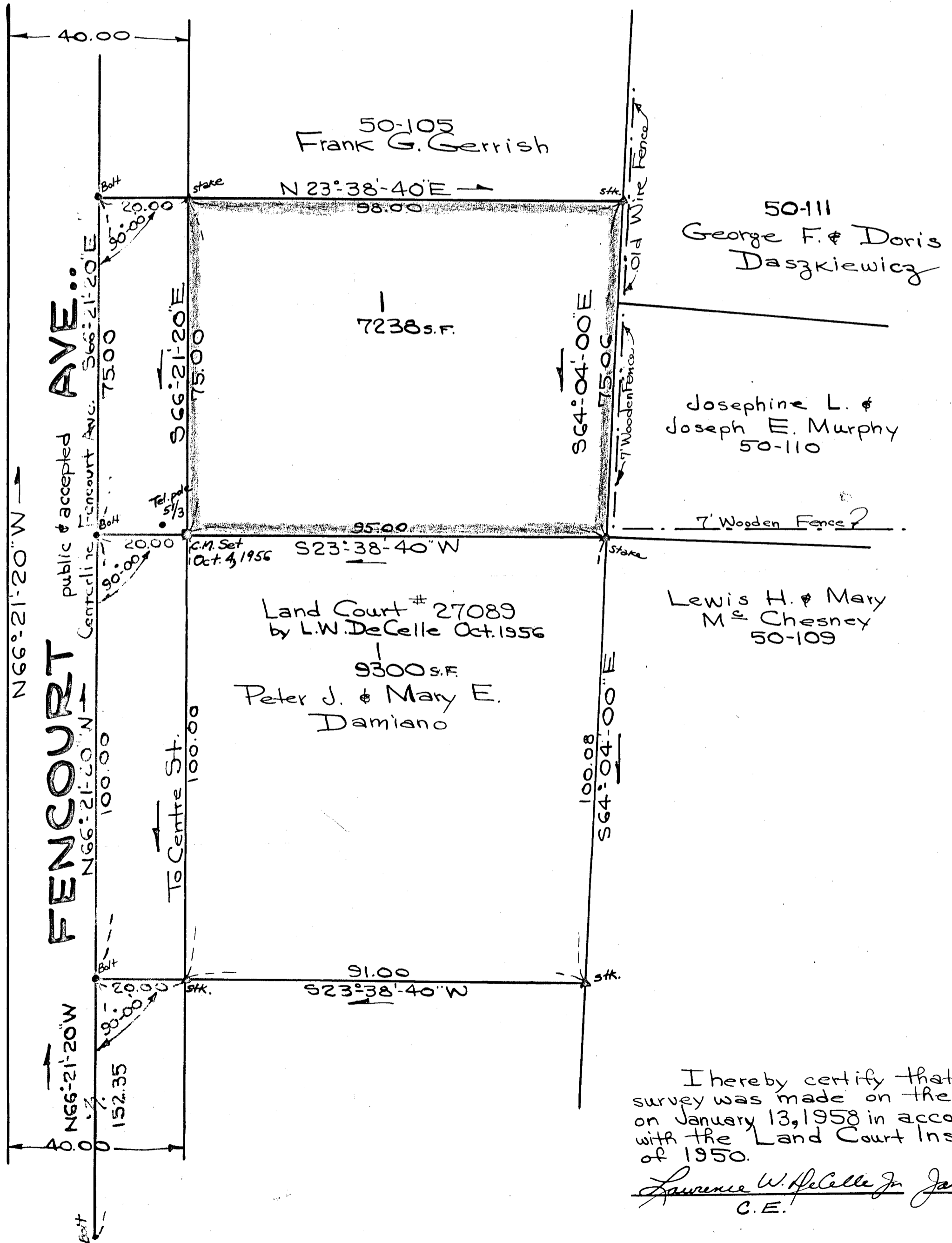
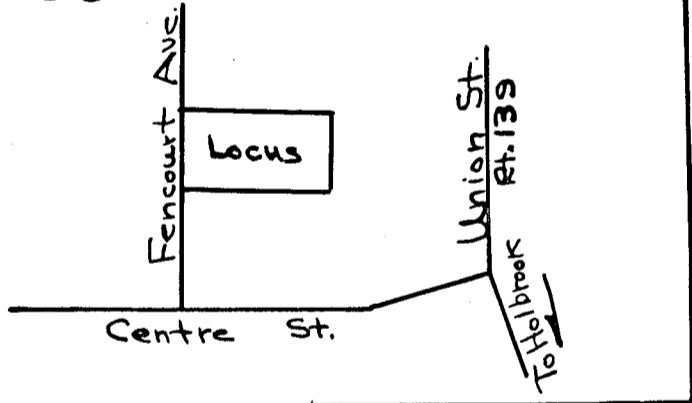
Chairman: _____

Date: _____



LOCATION PLAN

Not drawn to scale!



I hereby certify that this survey was made on the ground on January 13, 1958 in accordance with the Land Court Instructions of 1950.

Lawrence W. DeCelle Jr. Jan. 13, 1958
C.E.