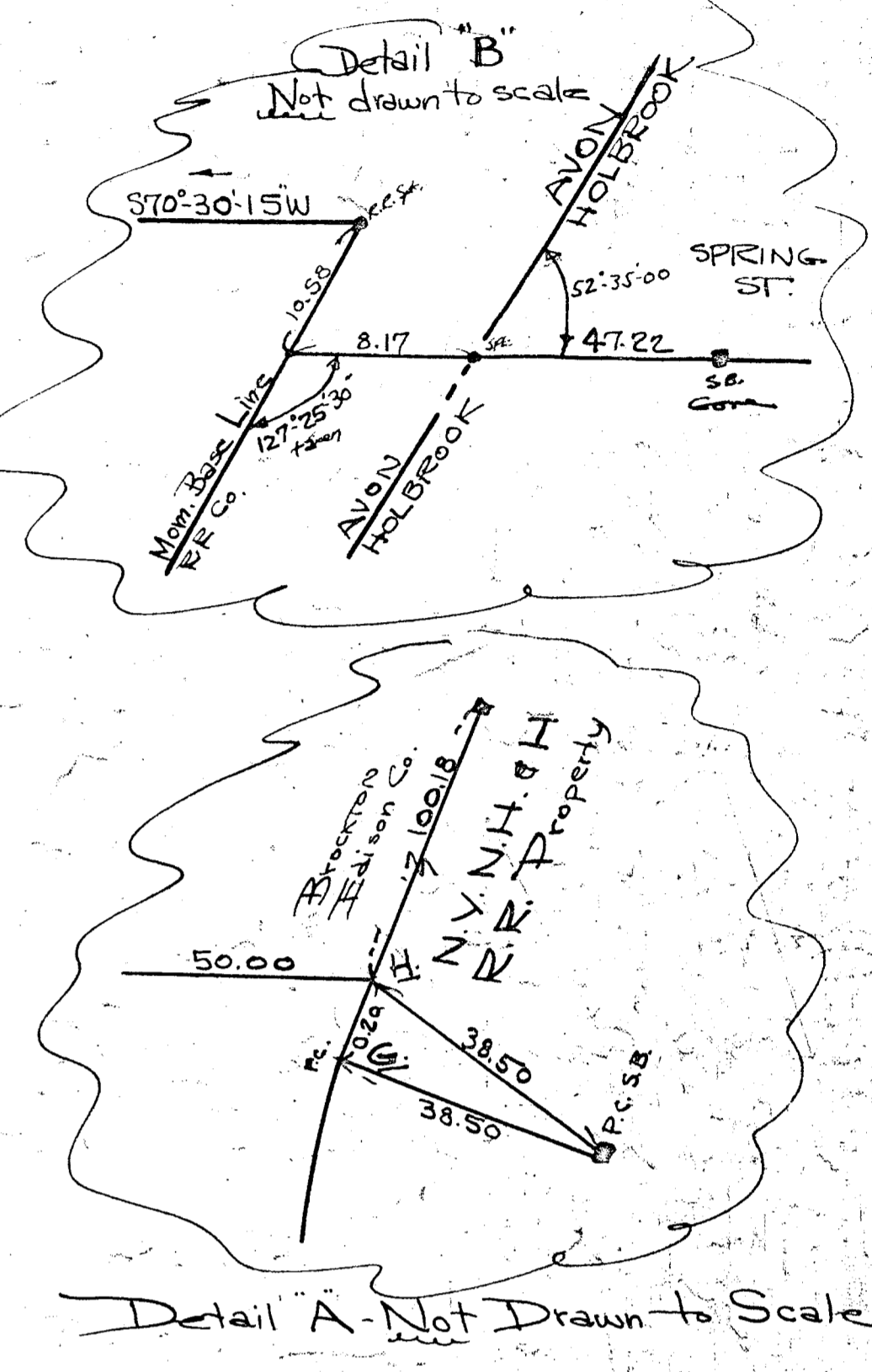
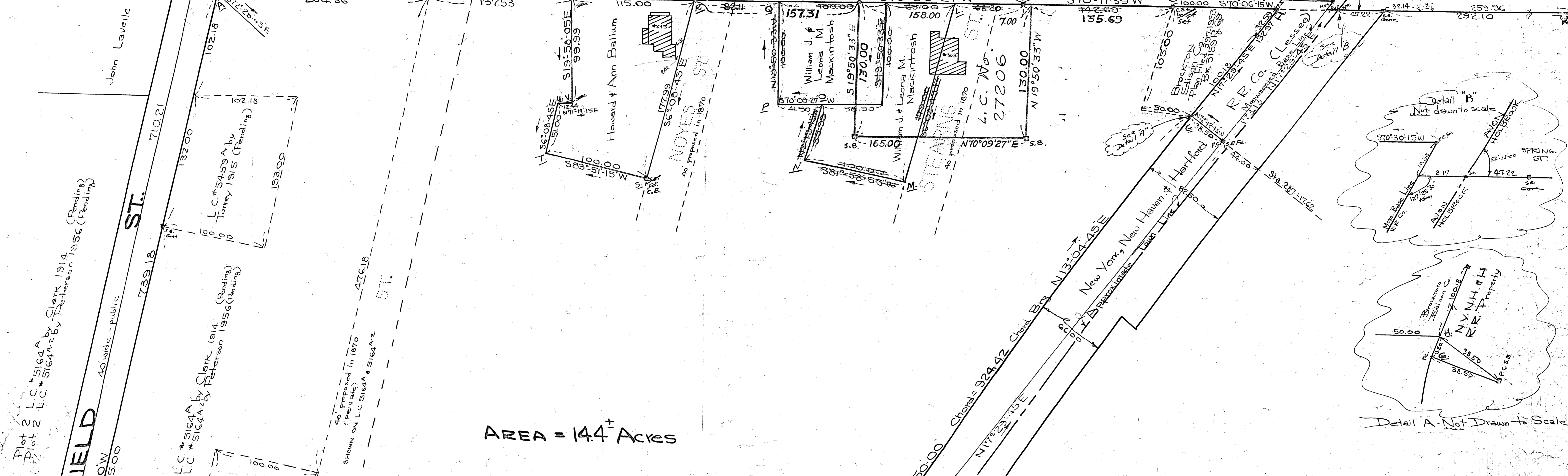


SPRING ST. 45' wide - public County layout of Aug. 1836



SURVEY TRAVERSE

Bearing	Dist.	E	W	N	S
S8°38'45"E	710.21	106.76	—	—	702.14
N80°18'15"E	660.95	651.41	—	111.88	—
N04°18'15"E	131.75	9.81	—	—	131.38
N17°24'45"E	862.52	259.30	—	—	822.62
S70°30'15"W	1089.85	—	1027.34	—	363.72
Totals	1027.36	1027.36	1065.88	1065.88	—

LOCUS TRAVERSE

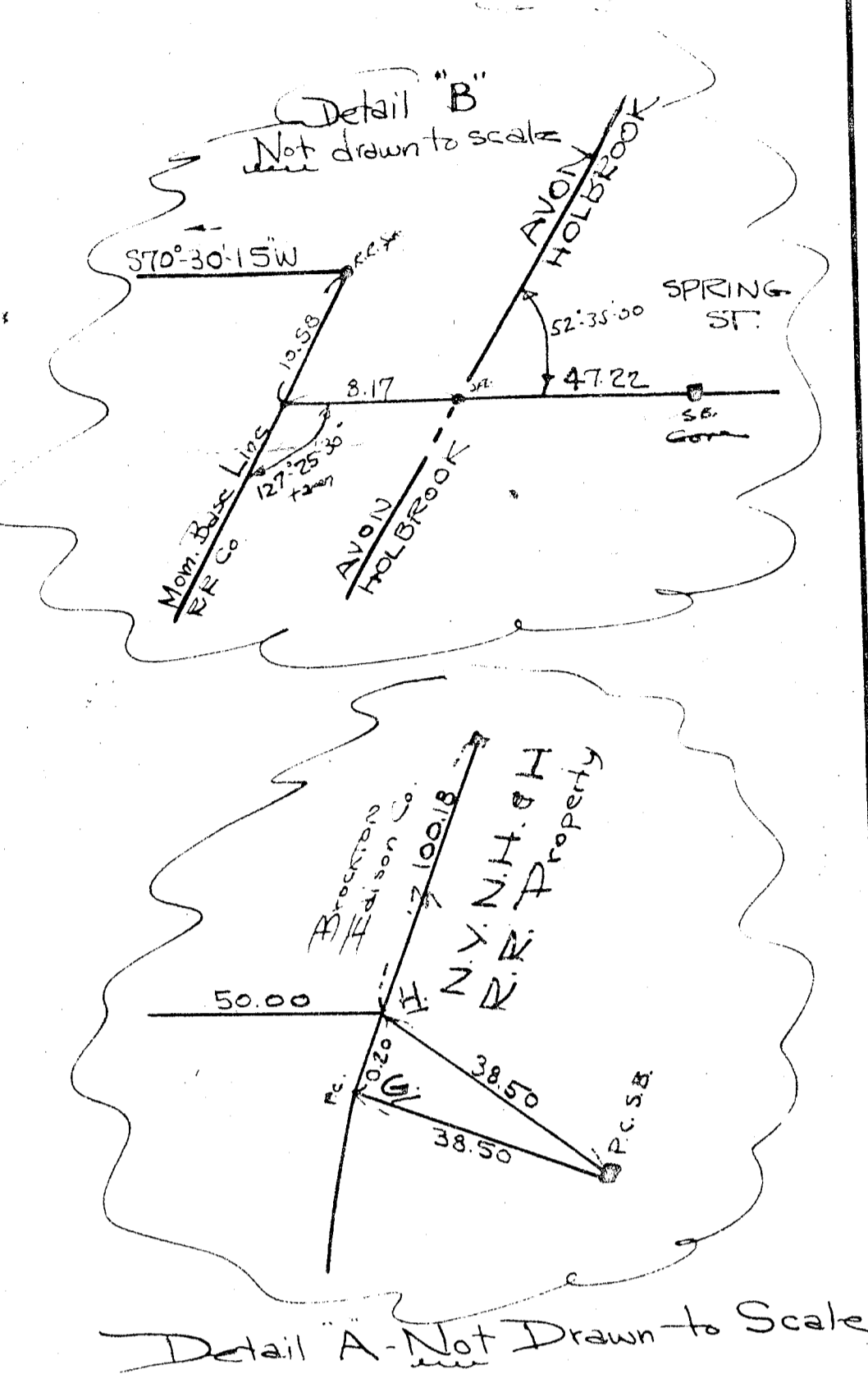
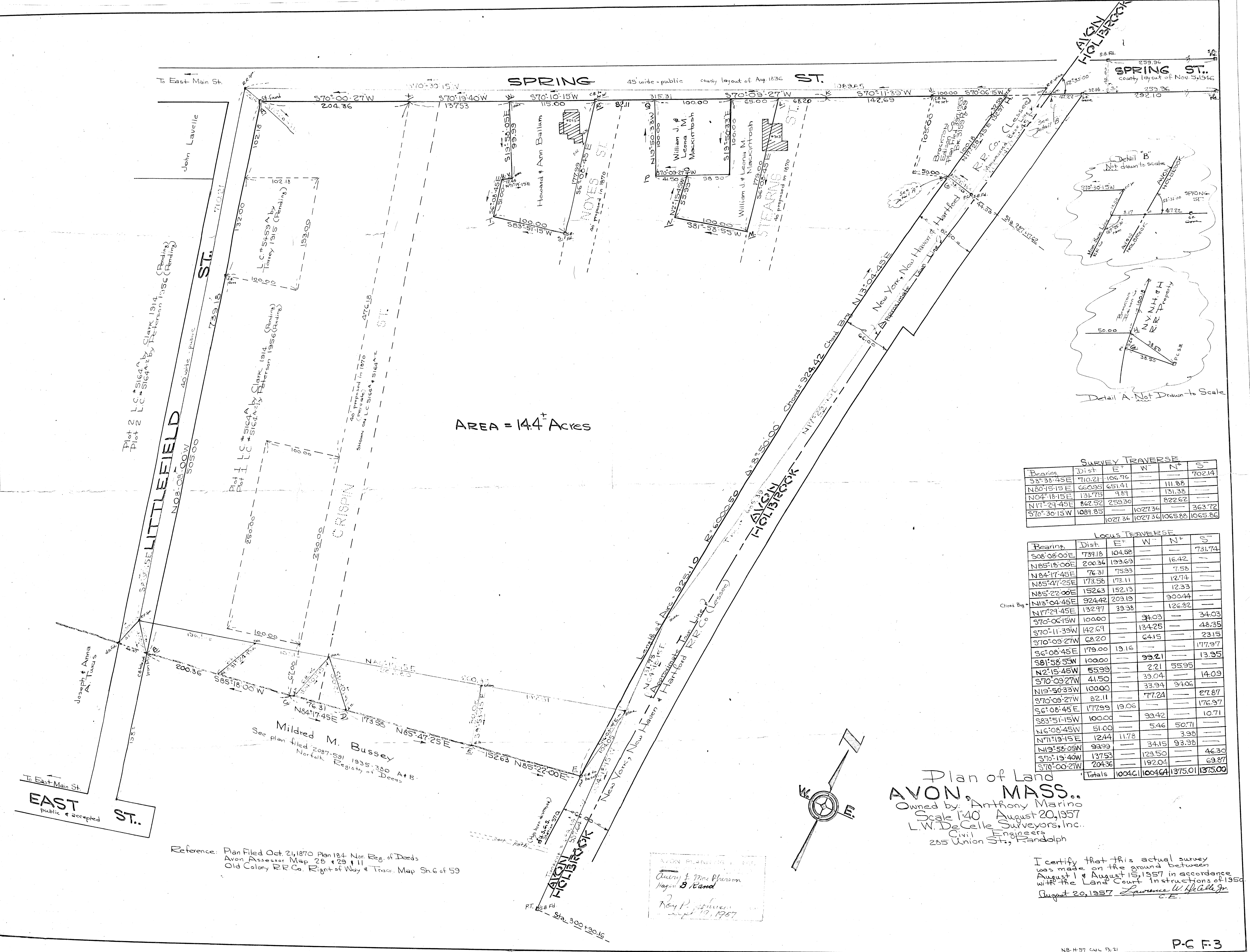
Bearing	Dist.	E	W	N	S
S08°08'00"E	739.18	104.58	—	—	731.74
N85°18'00"E	200.34	199.69	—	16.42	—
N84°17'45"E	76.31	75.93	—	7.58	—
N85°47'25"E	173.58	173.11	—	12.74	—
N85°22'00"E	152.63	152.13	—	12.33	—
N13°04'45"E	924.42	209.19	—	900.44	—
N17°24'45"E	132.97	33.38	—	126.82	—
S70°06'15"W	100.00	—	94.03	—	34.03
S70°11'39"W	142.69	—	134.25	—	48.35
S70°05'27"W	68.20	—	64.15	—	23.15
S6°08'45"E	179.00	19.16	—	—	177.97
S81°58'53"W	100.00	—	99.21	—	13.95
N2°15'45"W	55.99	—	2.21	55.95	—
S70°09'27"W	41.50	—	39.04	—	14.09
N19°50'33"W	100.00	—	33.94	94.06	—
S70°09'27"W	82.11	—	77.24	—	27.87
S6°08'45"E	177.99	19.06	—	—	176.97
S83°51'45"W	100.00	—	99.42	—	10.71
N6°08'45"W	51.00	—	5.46	50.71	—
N71°19'45"E	12.44	11.78	—	3.98	—
N19°58'05"W	99.99	—	34.15	93.98	—
S70°19'40"W	137.53	—	129.50	—	46.30
S70°00'27"W	204.36	—	192.04	—	69.87
Totals	1004.61	1004.61	1375.01	1375.00	—

Reference: Plan Filed Oct 24, 1870 Plan 184 Nor. Reg. of Deeds
 Avon Assessor Map 28 & 29 & 11
 Old Colony R.R. Co. Right of Way & Track Map Sh. 6 of 59

AVON PLANNING BOARD
 APPROVAL UNDER SUBDIVISION CONTROL LAW
 NOT REQUIRED
 Avery B. Marston
 Mayor
 Roy P. Johnson
 Sept 19, 1957

Plan of Land
AVON, MASS.
 Owned by: Anthony Marino
 Scale 1"=40' August 20, 1957
 L.W. DeCelle Surveyors, Inc.
 Civil Engineers
 285 Union St., Randolph

I certify that this actual survey was made on the ground between August 1 & August 15, 1957 in accordance with the Land Court instructions of 1956 August 29, 1957
 Lawrence W. DeCelle, Jr.
 C.E.



SURVEY TRAVERSE

Bearing	Dist	E*	W*	N*	S*
S3°38'45"E	710.21	104.96	—	—	702.14
N80°48'15"E	660.95	651.41	—	111.88	—
N04°18'15"E	131.75	9.89	—	131.38	—
N17°29'45"E	862.52	259.30	—	822.62	—
S70°30'15"W	1089.85	—	1027.36	—	363.72
Totals	1027.36	1027.36	1065.88	1065.88	—

LOCUS TRAVERSE

Bearing	Dist	E*	W*	N*	S*
S08°08'00"E	739.18	104.58	—	—	731.74
N85°18'00"E	200.36	193.63	—	16.42	—
N84°17'45"E	76.31	75.93	—	7.58	—
N85°47'25"E	173.58	173.11	—	12.74	—
N85°22'00"E	152.63	152.13	—	12.33	—
N13°04'45"E	924.42	203.19	—	900.44	—
N17°29'45"E	132.97	33.38	—	126.32	—
S70°06'15"W	100.00	—	94.03	—	34.03
S70°11'39"W	142.69	—	134.25	—	48.35
S70°09'27"W	68.20	—	64.15	—	23.15
S6°08'45"E	179.00	13.16	—	—	177.97
S81°58'55"W	100.00	—	99.21	—	13.95
N2°15'45"W	55.99	—	2.21	55.95	—
S70°09'27"W	41.50	—	39.04	—	14.09
N19°50'33"W	100.00	—	33.94	94.06	—
S70°08'27"W	82.11	—	77.24	—	27.87
S6°08'45"E	177.99	19.06	—	—	176.97
S83°51'15"W	100.00	—	93.42	—	10.71
N6°08'45"W	51.00	—	5.46	50.71	—
N71°19'15"E	1244	11.78	—	3.98	—
N19°50'05"W	93.99	—	34.15	93.36	—
S70°19'40"W	137.53	—	129.50	—	46.30
S70°00'27"W	204.36	—	192.04	—	69.87
Totals	1004.61	1004.61	1375.01	1375.01	—

Plan of Land
AVON, MASS.
 Owned by: Anthony Marino
 Scale 1"=40' August 20, 1957
 L.W. DeCelle Surveyors, Inc.
 Civil Engineers
 285 Union St., Randolph

I certify that this actual survey was made on the ground between August 1 & August 15, 1957 in accordance with the Land Court Instructions of 1950. August 20, 1957 Lawrence W. DeCelle, Jr. C.E.

Reference: Plan Filed Oct. 21, 1870 Plan 184 Nor. Reg. of Deeds
 Avon Assessor Map 28 & 29 #11
 Old Colony R.R. Co. Right of Way & Trac. Map Sh. 6 of 59

Avon Plan 184 of 1870
 Query & Plan by
 Hapin B. Bond
 Roy P. Johnson
 August 19, 1957

