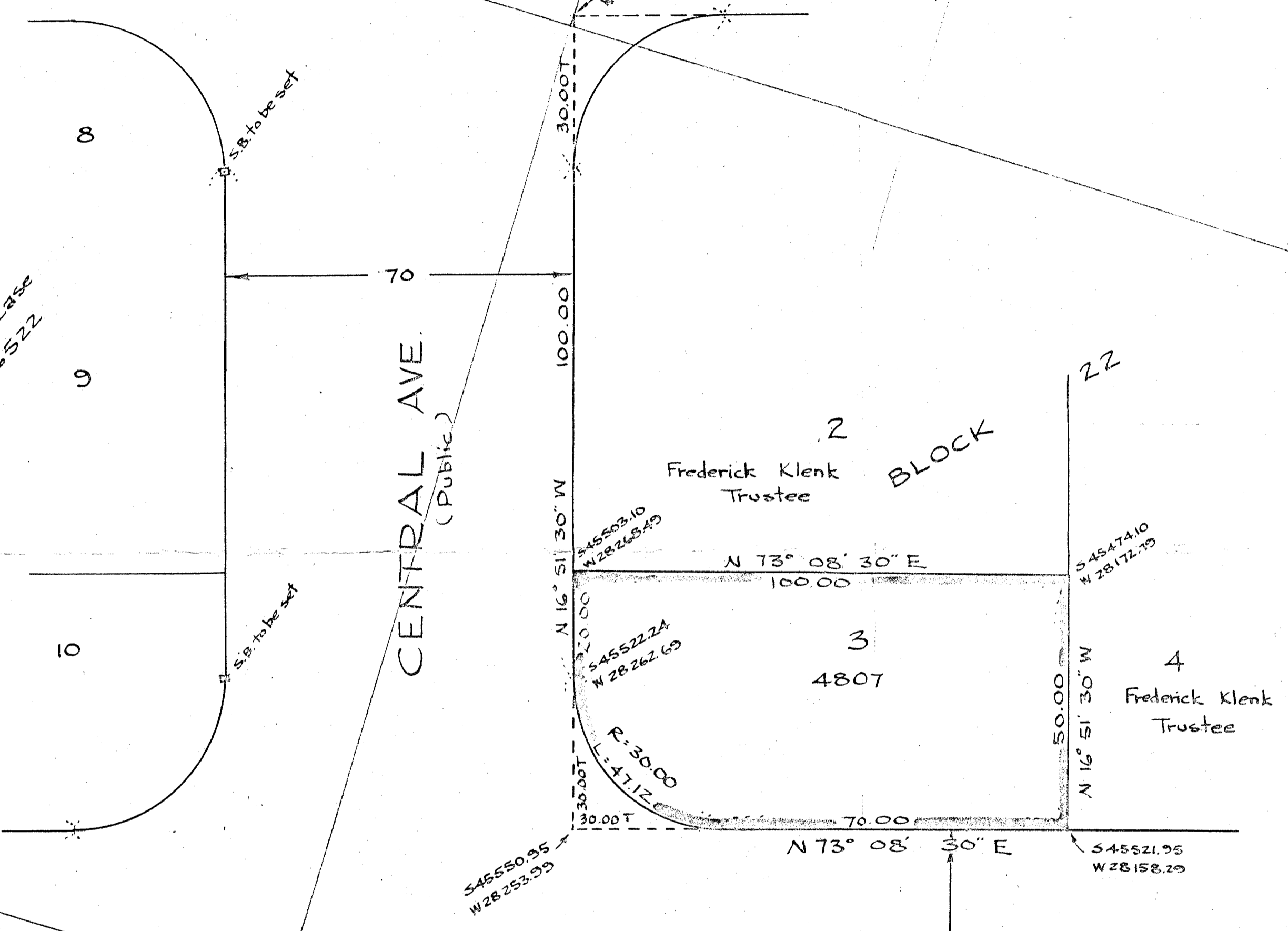


Ld. Ct. Case
26522



Plan of Land in
DEDHAM, MASS.

Scale: 1 inch = 20 feet Pilling Engineering Co., Inc.
26 Norfolk St. Dedham, Mass.
June 22, 1956

Approval under Subdivision Control
Law not required

DEDHAM PLANNING BOARD

L.C. 25246

I certify that this plan was made in accordance with Land Court
Instructions from an actual survey made on the ground on June
20, 1956

Howard L. Millard
Civil Engineer