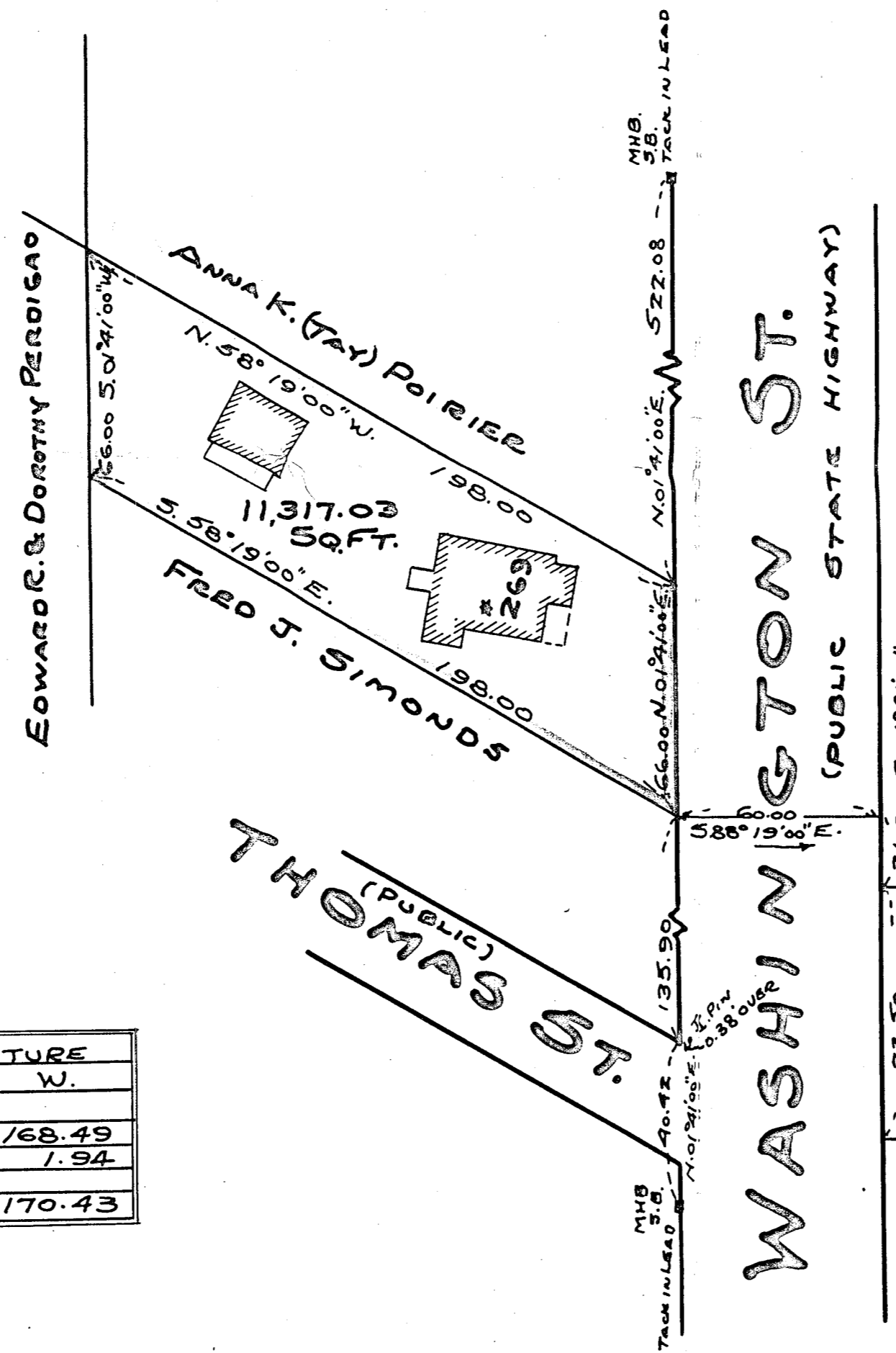


PLAN OF LAND  
IN  
STOUGHTON MASS.  
BELONGING TO  
**FRANK H. SIMONDS**  
SCALE 1" = 40'      JAN. 9 1958.

EDWARD C. PETERSON REG. PROF. ENG.  
74 LINCOLN ST. STOUGHTON MASS.

I CERTIFY THAT THIS PLAN WAS MADE  
IN ACCORDANCE WITH LAND COURT INSTRUCTIONS  
OF 1950.      JAN. 9 1958. Edward C. Peterson.      ENG.



DIST.	BEARING	LATITUDE		DEPARTURE	
		N.	S.	E.	W.
66.00	N. 01° 41' 00" E	65.97		1.94	
198.00	N. 58° 19' 00" W	103.99			168.49
66.00	S. 01° 41' 00" W		65.97		1.94
198.00	S. 58° 19' 00" E		103.99	168.49	
		169.96	169.96	170.43	170.43

LAND COURT CERT. # 51825  
DECREE # 3232  
FRANK & ROSE G.  
POILLUCCI

PLANNING BOARD APPROVAL UNDER  
SUBDIVISION CONTROL LAW  
NOT REQUIRED.

JAN 16, 1958 *Almon J. Fudwick* SEC.  
PLANNING BOARD  
TOWN OF STOUGHTON MASS.