

Approval under Subdivision Control
 Law not required
M. W. B. ...
Louis P. Hegler, Jr.
 WALPOLE PLANNING BOARD

Eleanor M. and
 Katherine V. Shea

Katherine V. Shea

I certify that this plan was according to the Land Court Instructions
 of 1950 from an actual survey made on the ground from April 28-29, 1957

Howard L. Mellard Civil Engineer

NOTE:
 This plan based on "Plan of Lots in Walpole, Mass."
 E. Worthington, Eng. dtd. Nov. 2, 1923.

Lewis C. and Loretta A.
 Whipple

LC 26254 A
 James H. Ginley

Domenico Broccoli

Plan of Land in
WALPOLE, MASS.

Scale: 1 inch = 20 feet
 Pilling Engineering Co., Inc.
 26 Norfolk St., Dedham, Mass.

April 30, 1957

LAND COURT
 JAN 13 '58

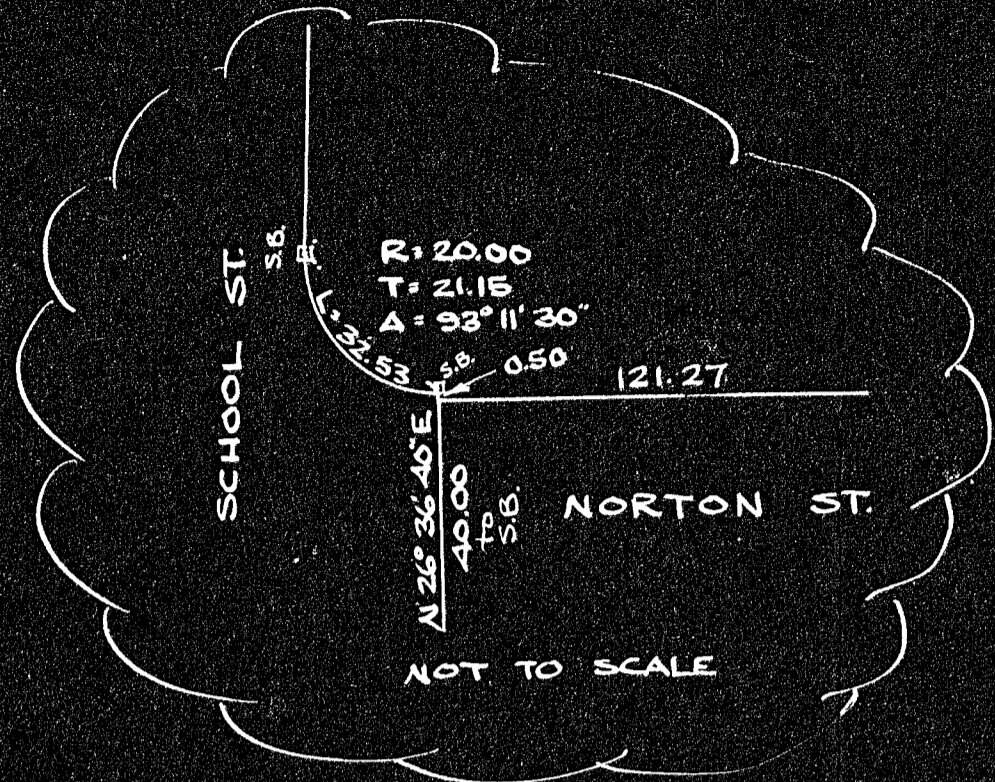
Re: Conc. Bds. Set
 letter filed Jan. 13/58

28113 A
 1-13-58
 J.S.
 Norfolk Co. Pl. 42

Plan of Land in WALPOLE, MASS.

Scale: 1 inch = 30 feet Pilling Engineering Co., Inc.
26 Norfolk St., Dedham, Mass.

January 30, 1957



Approval under Subdivision Control
Law not required
Walter C. Rockwood *Leo F. Petreault*
 WALPOLE PLANNING BOARD
Louis E. Hoegler, Jr.



I certify that this plan was made according to Land Court Instructions of 1950 from an actual survey made on the ground from Jan 23-25, 1957
Howard L. Millard
 Civil Engineer

LAND COURT
JAN 13 '58
FILED

28113A²
 1-15-58
 Norfolk Co. Pl. 42