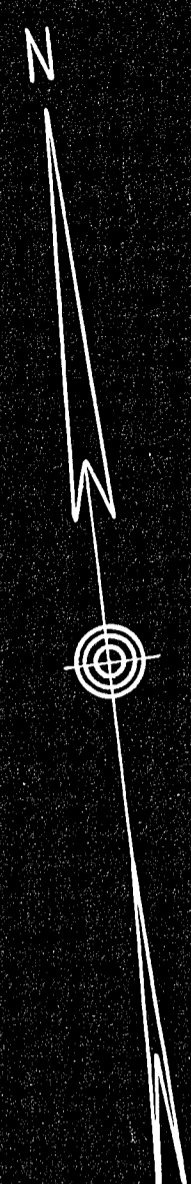


PROPERTY LINE TRAVERSE					
Bearing	Dist.	N	S	E	W
S 08° 58' 30" W	100.00		98.78		15.60
N 83° 25' 30" W	90.00	10.32			89.41
N 08° 58' 30" E	100.00	98.78		15.60	
S 83° 25' 30" E	90.00		10.32	89.41	
		109.10	109.10	105.01	105.01



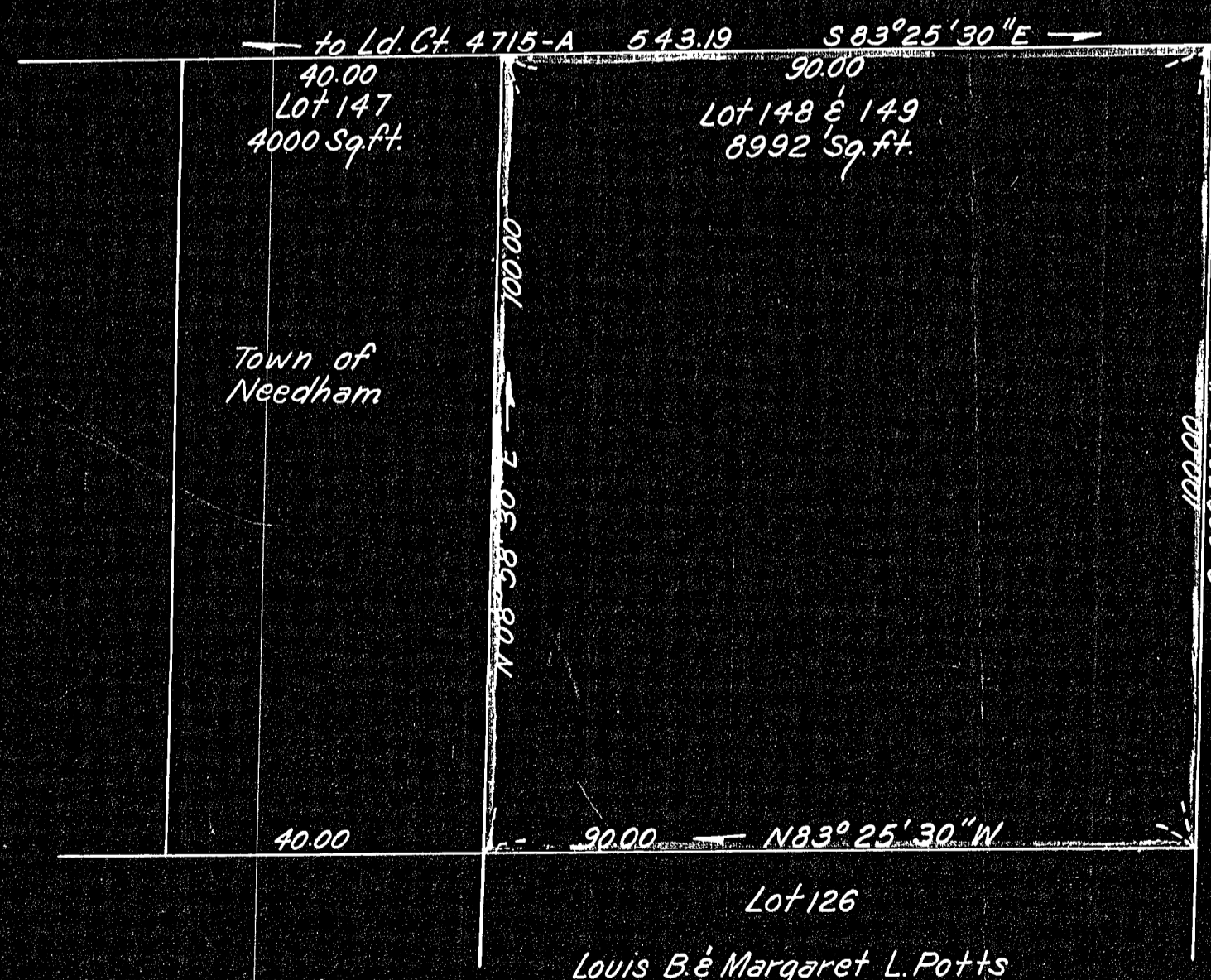
CYPRESS (PRIVATE WAY) ST.

ST.

(TOWN 1952)

BLAKE (PRIVATE WAY - TOWN EASEMENT) ST.

LINDEN



*Edward J. Lee
Henry V. Perry
Edward M. Warriner*

JAN. 7, 1958

PLAN OF LAND IN NEEDHAM MASS.

SCALE 1 IN 20 FT. JAN 5, 1958
ROBERT A. MAC EWEN, CIVIL ENGINEER,
28 THORNTON RD., NEEDHAM, MASS.

I CERTIFY THAT THIS PLAN WAS MADE IN ACCORDANCE WITH THE LAND COURT INSTRUCTIONS OF 1950

Robert A. MacEwen
CIVIL ENGINEER

28109

NEEDHAM
F.L.S.
1-10-58
WEL