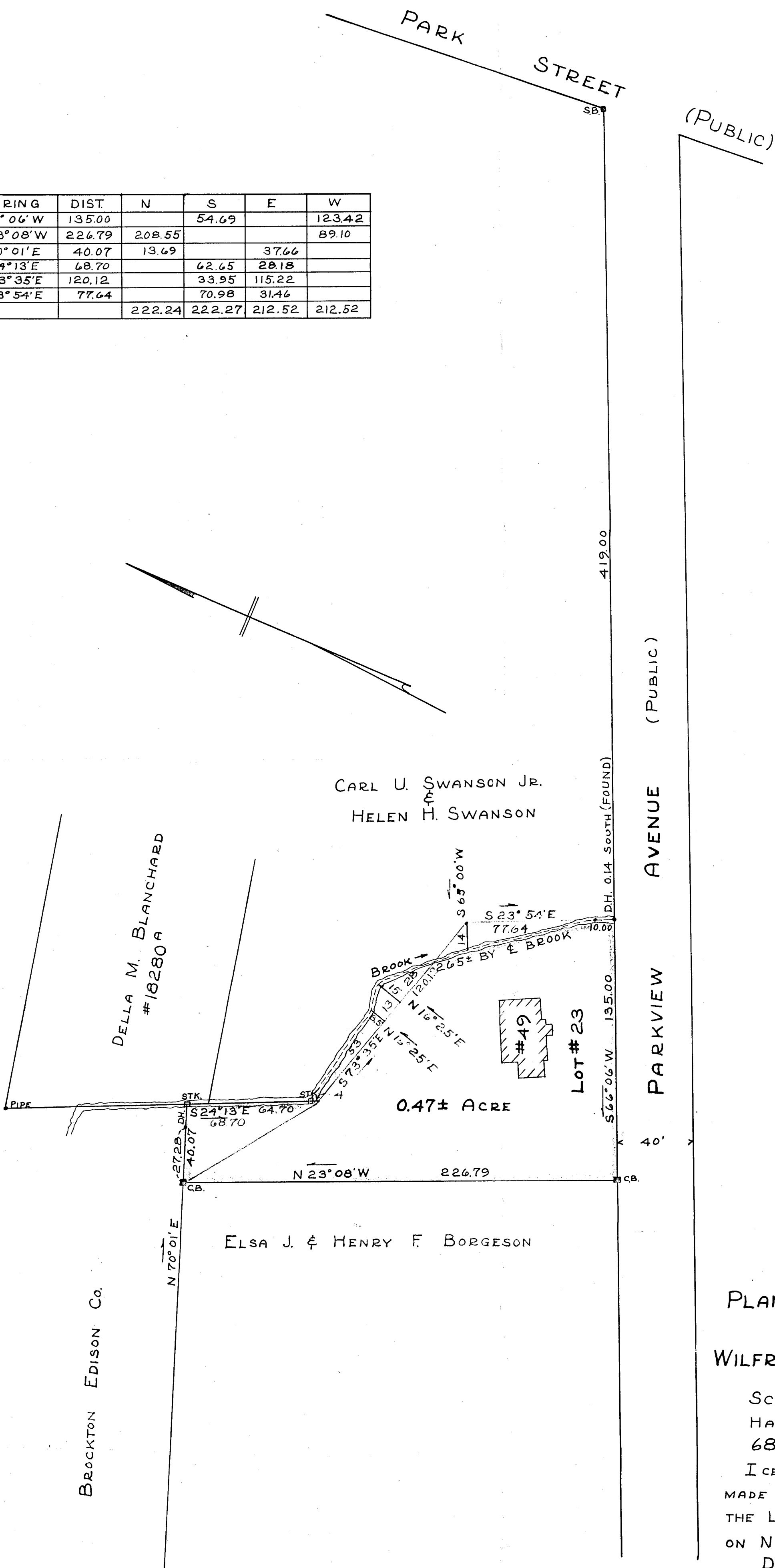


BEARING	DIST.	N	S	E	W
S 66° 06' W	135.00		54.69		123.42
N 23° 08' W	226.79	208.55			89.10
N 70° 01' E	40.07	13.69		37.66	
S 24° 13' E	68.70		62.65	28.18	
S 73° 35' E	120.12		33.95	115.22	
S 23° 54' E	77.64		70.98	31.46	
		222.24	222.27	212.52	212.52



PLANNING BOARD APPROVAL
 UNDER SUBDIVISION CONTROL
 LAW NOT REQUIRED

SIGNATURES OF PLANNING BOARD
Almon M. Fredericks Sec'y

DATE: *Dec. 9, 1957.*

LAND COURT
 PLAN OF LAND IN STOUGHTON
 BELONGING TO
 WILFRED A. & DOROTHY A. LEFEBVRE
 49 PARKVIEW AVENUE
 SCALE 1"=40' NOVEMBER 25, 1957
 HAYWARD - BOYNTON SURVEYORS
 68 MAIN STREET BROCKTON
 I CERTIFY THAT THIS ACTUAL SURVEY WAS
 MADE ON THE GROUND IN ACCORDANCE WITH
 THE LAND COURT INSTRUCTIONS OF 1950
 ON NOVEMBER 25, 1957
 DATE: - NOVEMBER 25, 1957

J. E. Boynton
 REG. ENGR.