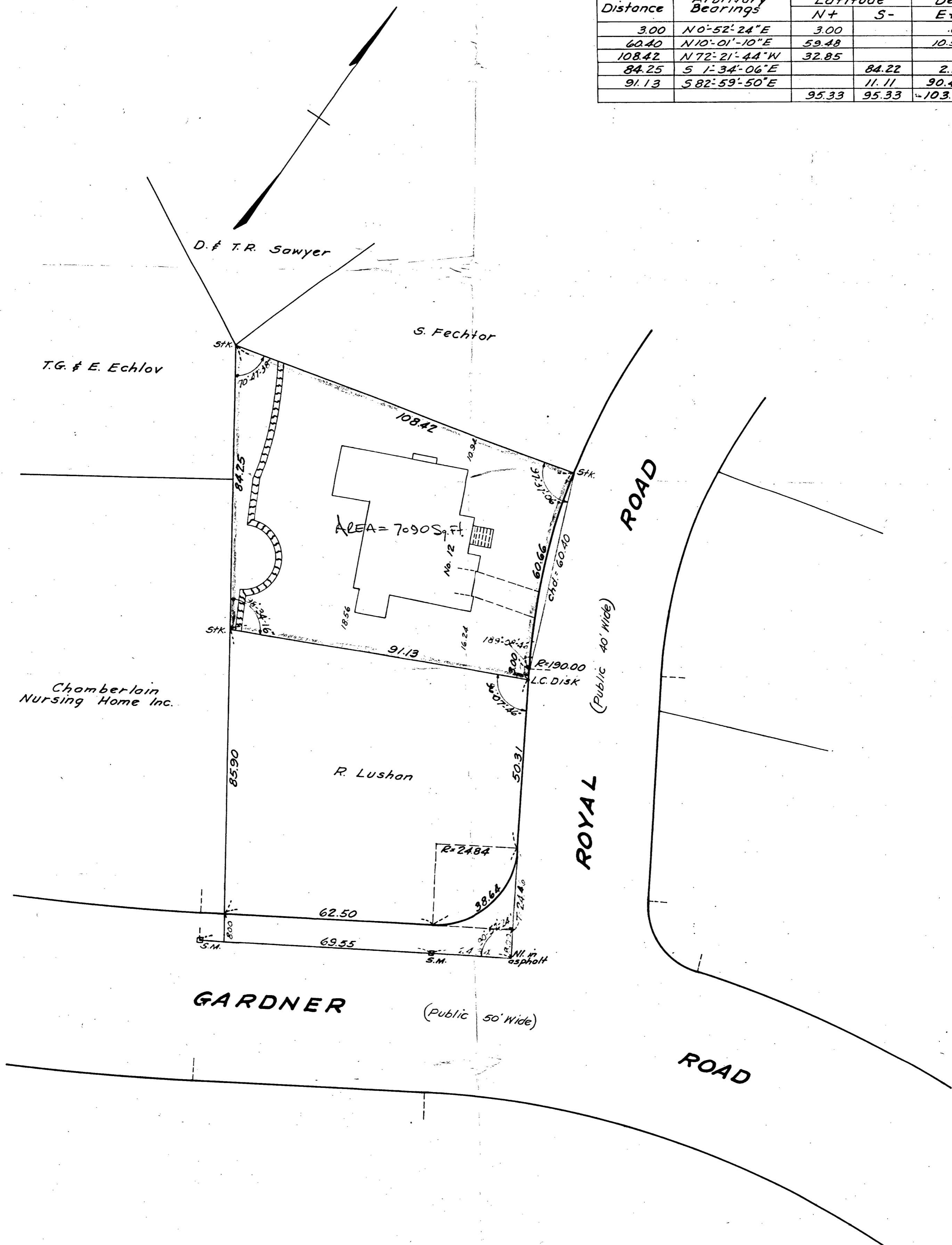
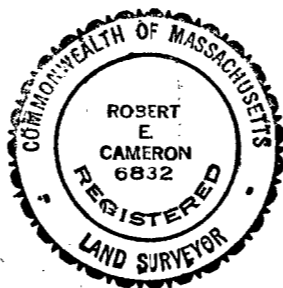


Distance	Arbitrary Bearings	Latitude		Departure	
		N+	S-	E+	W-
3.00	N 0°-52'-24" E	3.00		.05	
60.40	N 10°-01'-10" E	59.48		10.51	
108.42	N 72°-21'-44" W	32.85			103.32
84.25	S 1°-34'-06" E		84.22	2.31	
91.13	S 82°-59'-50" E		11.11	90.45	
		95.33	95.33	-103.32	103.32



I Certify That This Actual Survey
 was Made on the Ground in Accordance
 With the Land Court Instructions
 of 1950 on Oct. 18, 1957

October 25, 1957 Robert E. Cameron



**PLAN OF LAND
 BROOKLINE MASS.**
 Scale: 1 Inch = 20 ft.
 Harry R. Feldman Inc.,
 27 School St.
 Oct. 22, 1957
 Engineers
 Boston, Mass.