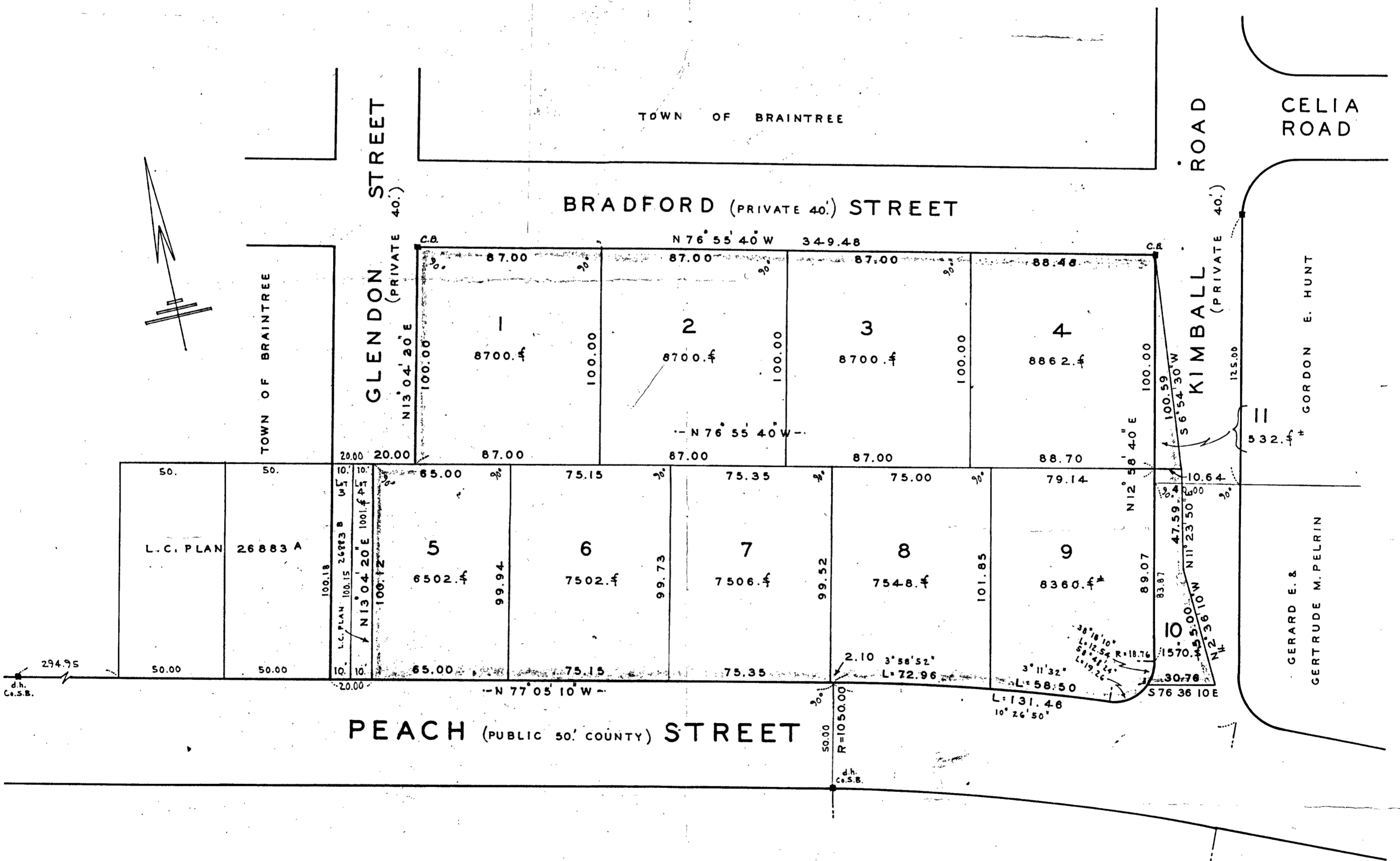


PLAN OF LAND IN  
**BRAINTREE**  
 NORFOLK COUNTY, MASS.  
 SCALE: 1" = 40' OCT. 17, 1957  
 THE SCHUYLER CLAPP COMPANY  
 BRAINTREE, MASS.



I CERTIFY THAT THIS ACTUAL SURVEY WAS MADE  
 ON THE GROUND IN ACCORDANCE WITH THE LAND  
 COURT INSTRUCTIONS OF 1950 ON OCT. 2 1957

OCT. 17 1957 *Frederick T. Webb*  
 CLASS B



APPROVAL UNDER THE SUBDIVISION CONTROL  
 LAW NOT REQUIRED Oct 31 1957

*Joseph M. Maggioni*  
*Frederick T. Webb*  
 BRAINTREE PLANNING BOARD