

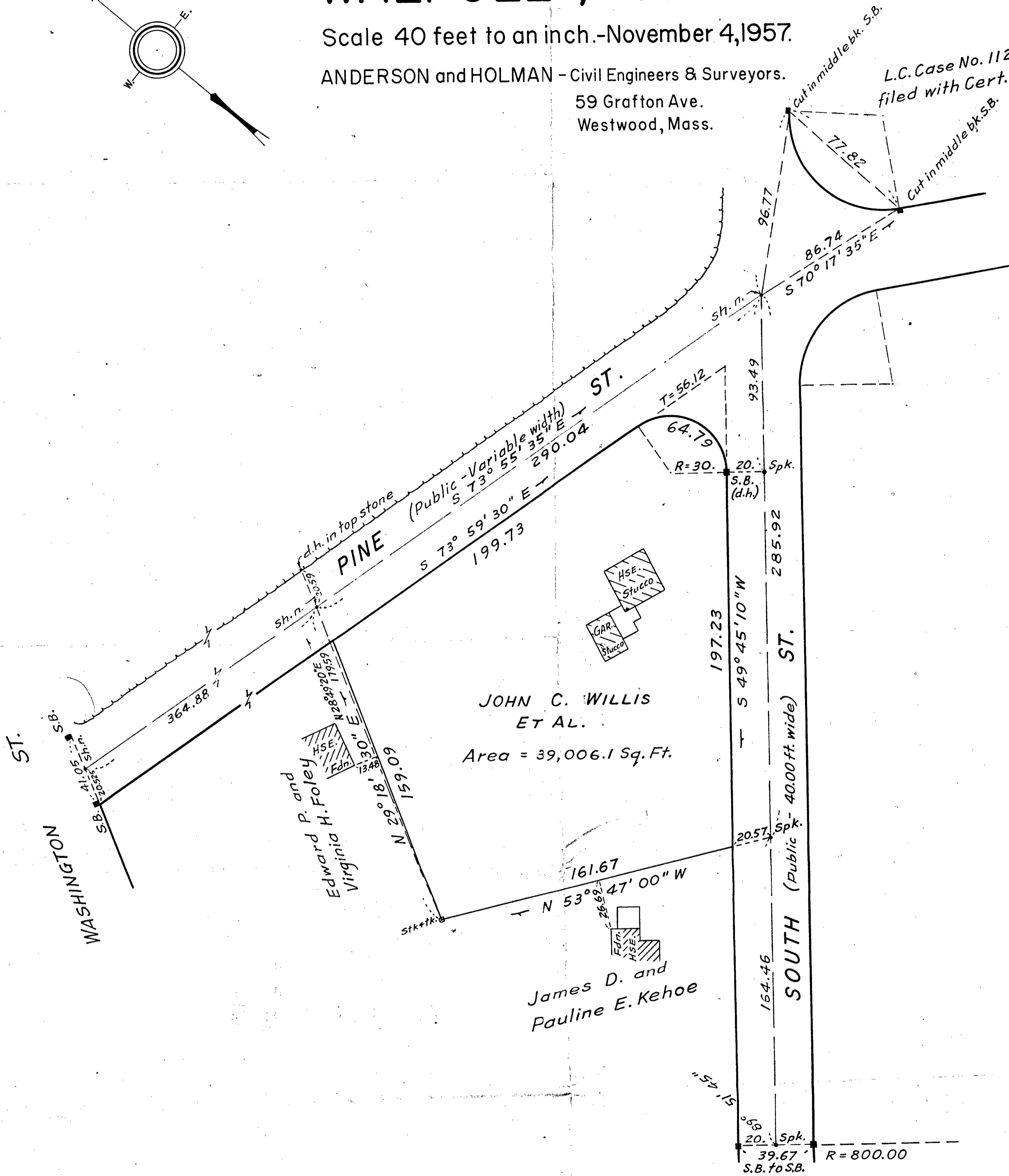
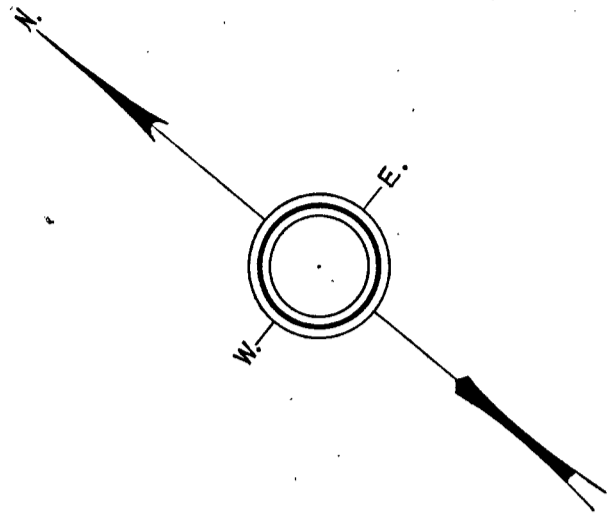
PLAN OF LAND IN WALPOLE, MASS.

Scale 40 feet to an inch.-November 4, 1957.

ANDERSON and HOLMAN - Civil Engineers & Surveyors.

59 Grafton Ave.
Westwood, Mass.

L.C. Case No. 11287 A
filed with Cert. of Title No. 9605



Approval under the Subdivision Control Law
is not required.

Town of WALPOLE PLANNING BOARD.

I certify that this actual survey was made on the ground
in accordance with the Land Court Instructions of 1950
on October 29 and 30, 1957.

Date: Nov. 4, 1957

Clifton D. Holman, Jr.
Reg. Land Surveyor

Date: _____