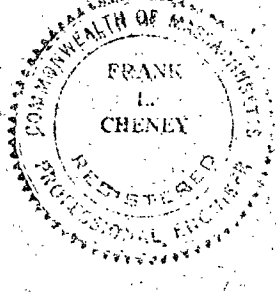
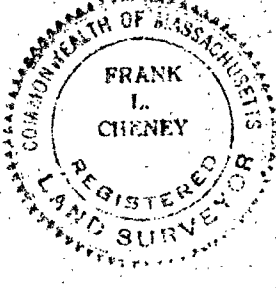
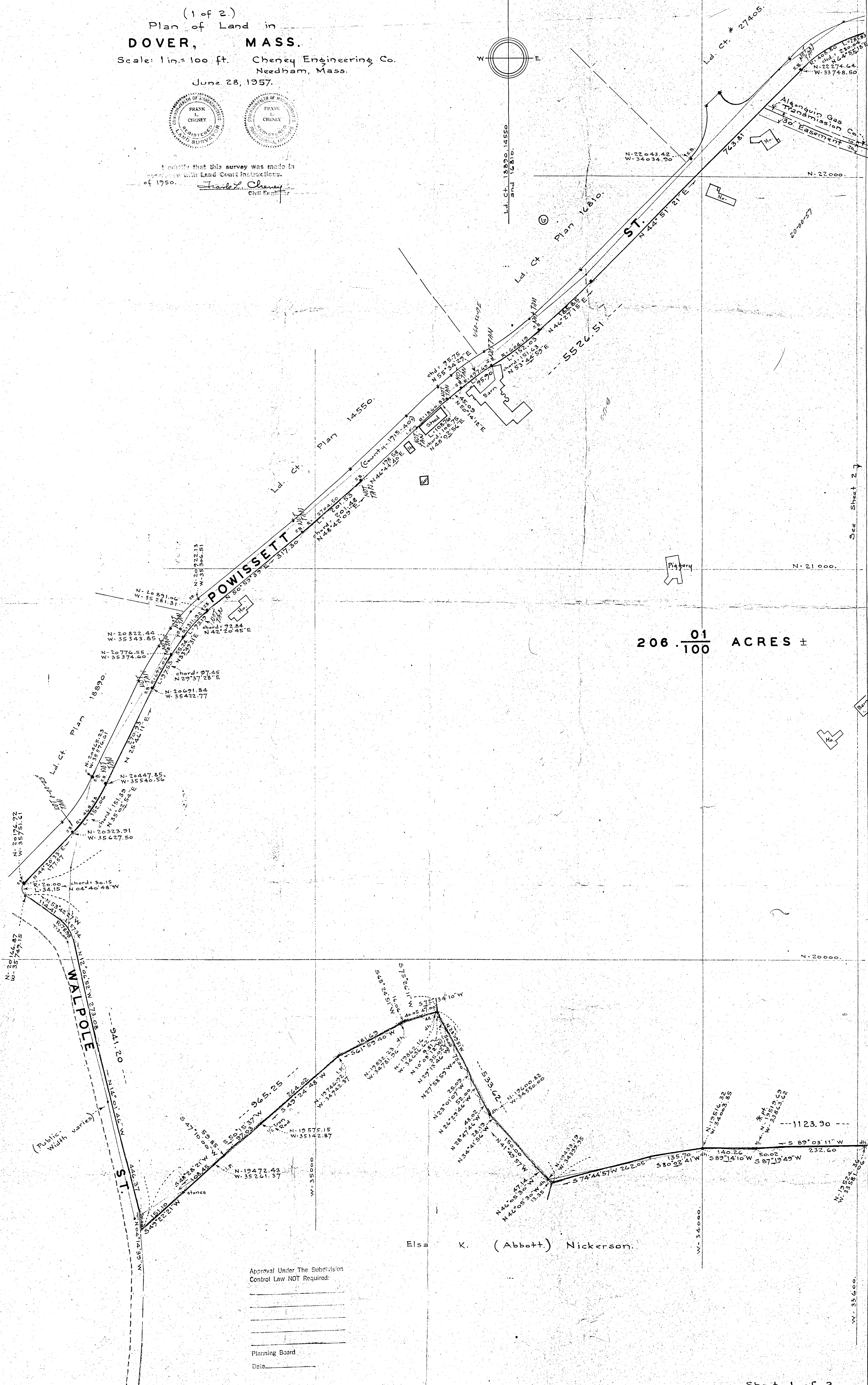
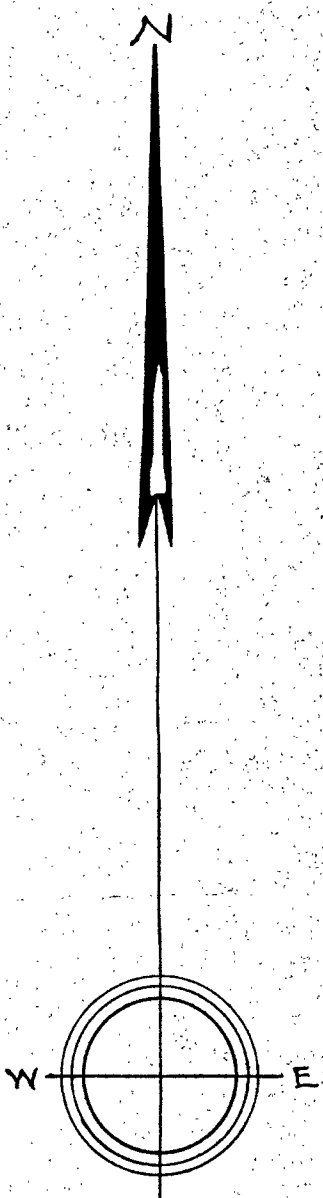


(1 of 2)
 Plan of Land in
DOVER, MASS.
 Scale: 1 in. = 100 ft. Cheney Engineering Co.
 Needham, Mass.
 June 28, 1957.



I certify that this survey was made in accordance with Land Court instructions of 1950.
Frank L. Cheney
 Civil Engineer



206.01/100 ACRES ±

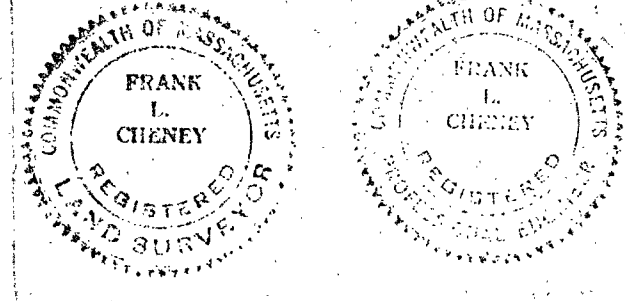
Elsa K. (Abbott) Nickerson.

Approval Under The Subdivision Control Law NOT Required:

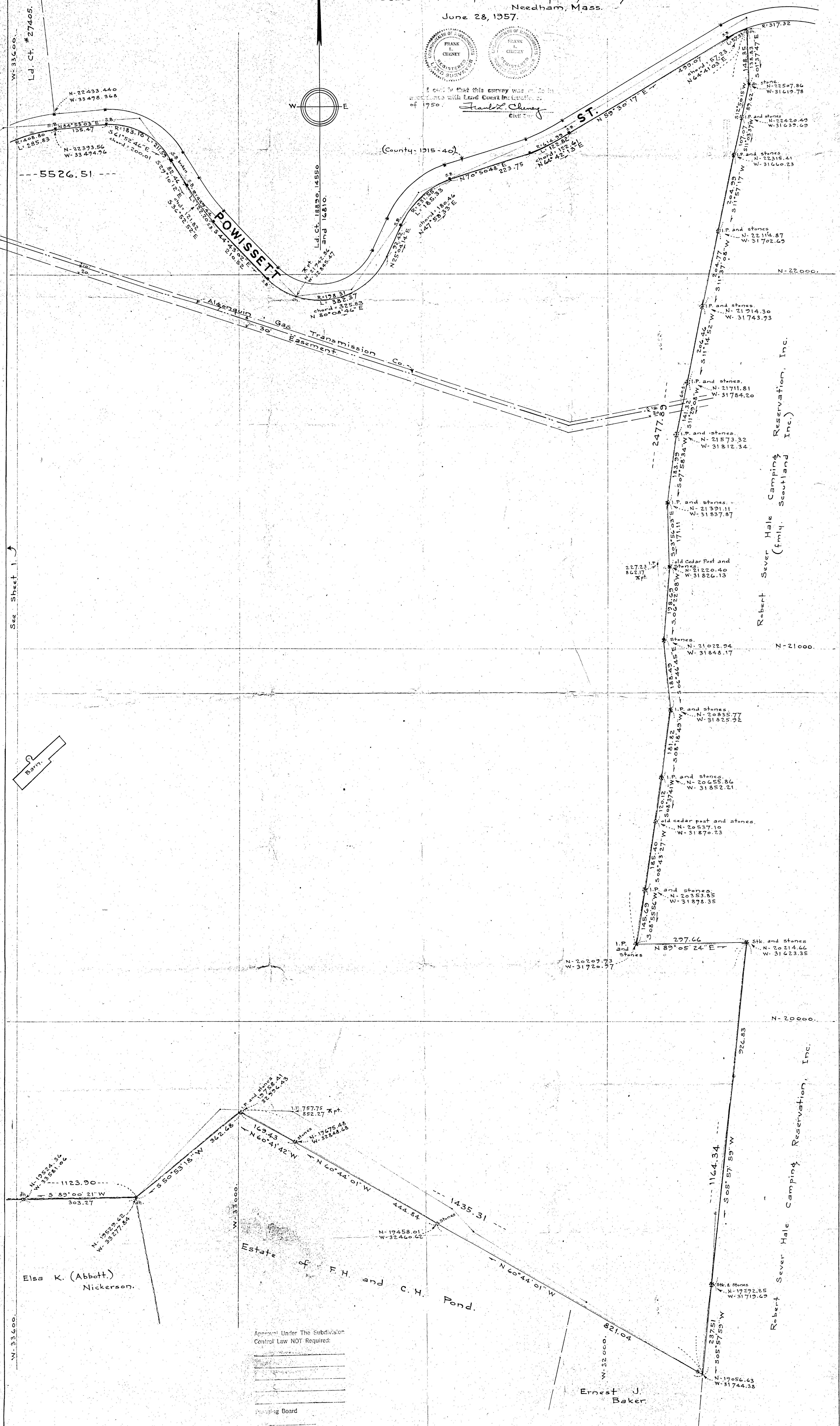
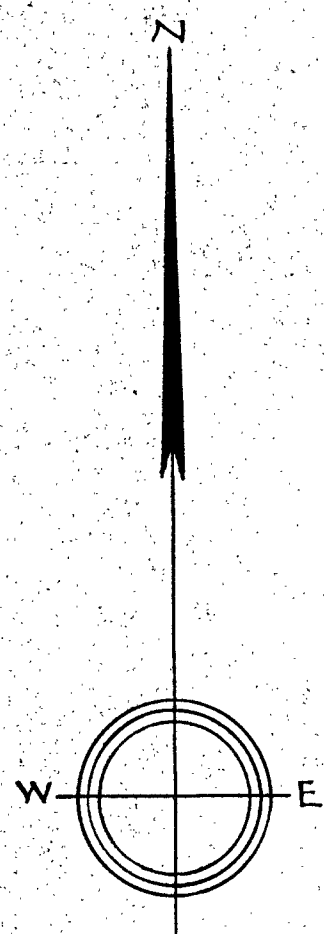
 Planning Board
 Date _____

(2 of 2.)
 Plan of Land in
DOVER, MASS.

Scale: 1 in. = 100 ft. Cheney Engineering Co.
 Needham, Mass.
 June 28, 1957.



I certify that this survey was made in accordance with Land Code Regulations of 1950.
 Frank Cheney
 Civil Engineer



Elsa K. (Abbott) Nickerson.

Estate of F. H. and C. H. Pond.

Ernest J. Baker.

Robert Sever Hale Camping Reservation, Inc.

Approval Under The Subdivision Control Law NOT Required:

 Planning Board