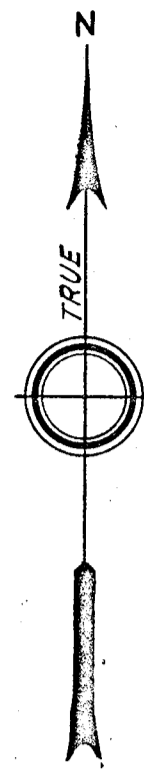


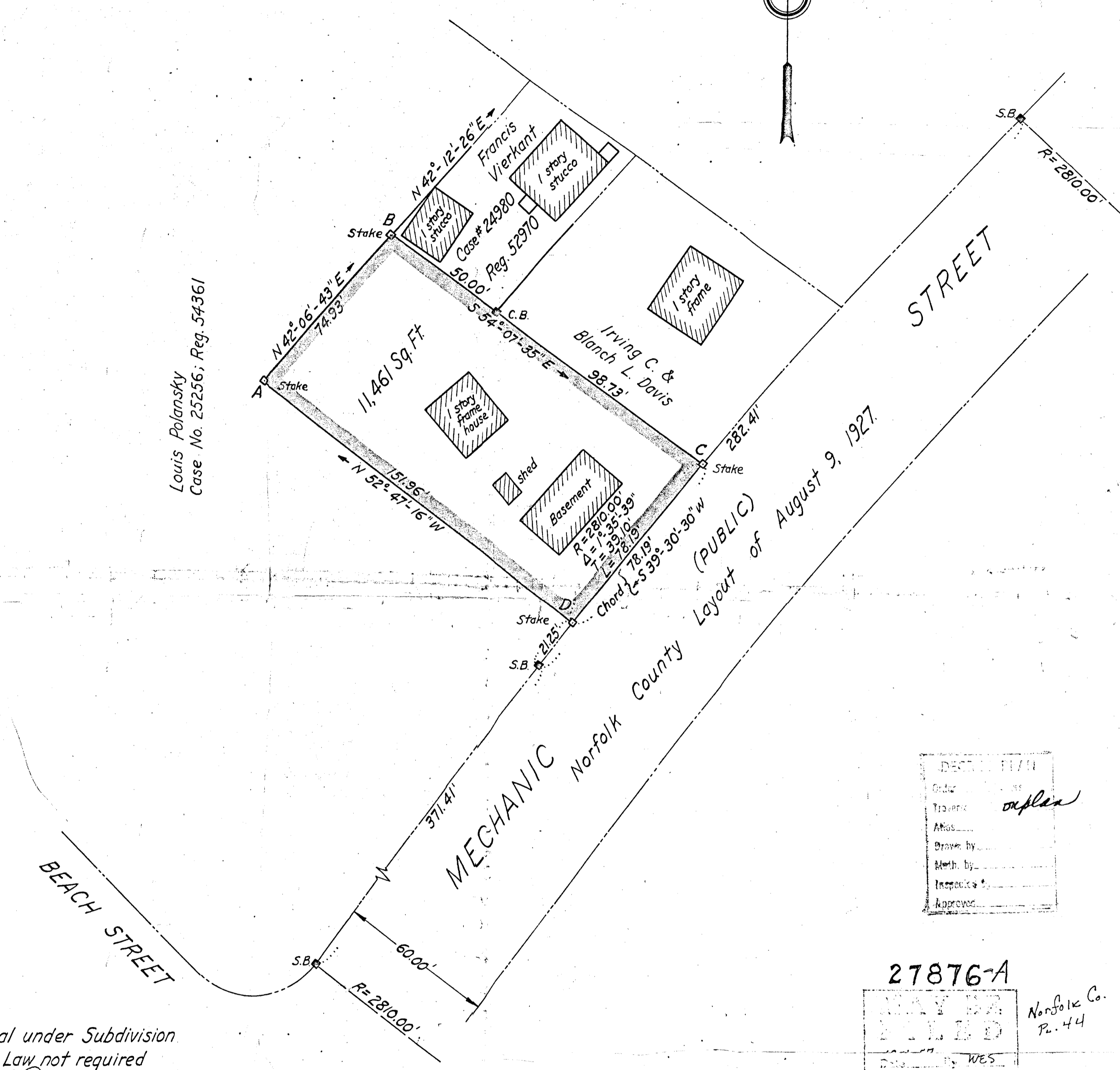
791828

Traverse Computation

Line	Dist.	Bearing	Cos.	Sin.	Lat.		Dep.	
					+	-	+	-
AB	74.93	N 42-06-43 E	74183606	67058128	55.59	—	50.25	—
BC	148.73	S 54-07-35 E	58599921	81031162	—	87.16	120.52	—
CD	78.19	S 39-30-30 W	77153206	63619044	—	60.33	—	49.75
DA	151.96	N 52-47-16 W	60476902	79640093	91.90	—	—	121.02
					147.49	147.49	170.77	170.77



Louis Polansky
Case No. 25256; Reg. 54361



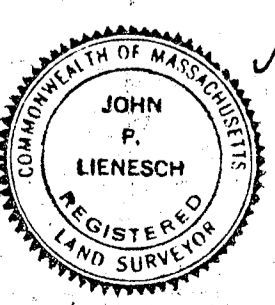
Order	
Traverse	complex
Atlas	
Drawn by	
Math. by	
Inspector's	
Approved	

27876-A
 MAY 22 1957
 FILED
 by WES
 Norfolk Co.
 P. 44

Approval under Subdivision
 Control Law not required
 Claude D'Young
 David K. Briggs
 John P. Lienesch

Foxborough Planning Board
 Date: Feb. 22, 1957

I certify that this actual survey
 was made on the ground in accordance
 with Land Court Instructions of 1950
 between February 1, 1957 and
 February 20, 1957.
 John P. Lienesch
 Surveyor



JOHN P. LIENESCH, SURVEYOR
 FOXBOROUGH, MASSACHUSETTS
 FEBRUARY 1957
 SCALE - 1" = 30'

MAP OF LAND
 IN
 FOXBOROUGH, MASSACHUSETTS
 PROPERTY OF LEATRICE J. URBAN

27876
 Meckie J.
 Fabio

27876-A