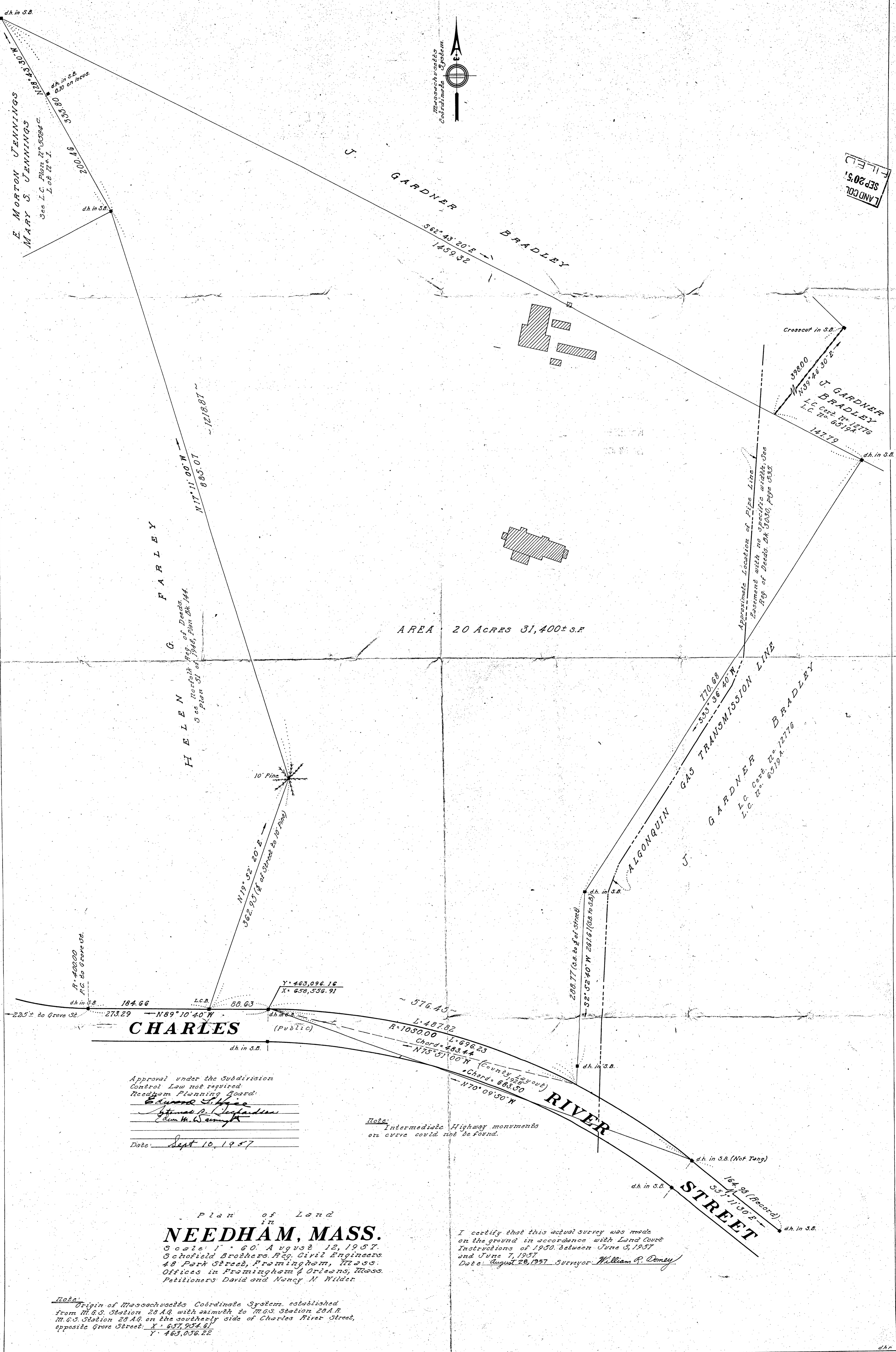
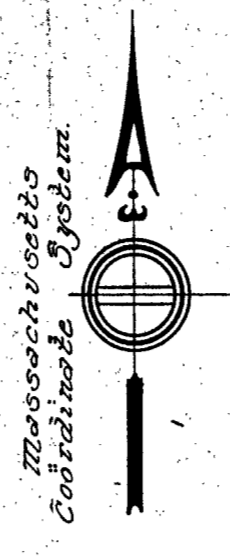


FILED
SEP 20 1957
LAND COL



E. MORTON JENNINGS
MARY S. JENNINGS
See L.C. Plat. 12° 3384 C.
Lot 17° 1.

J. GARDNER
BRADLEY
S62° 43' 20" E
1459.32

Crosscut in S.B.
398.00
N39° 24' 30" E
J. GARDNER
BRADLEY
L.C. Cert. 12° 12776
L.C. 22° 65194

G. FARLEY
HELEN
5 cc North Pl. of Deeds
Plat. 51 of 1946, Part Bk 144

AREA 20 ACRES 31,400± s.f.

ALGONQUIN GAS TRANSMISSION LINE
J. GARDNER
BRADLEY
L.C. Cert. 12° 12776
L.C. 22° 65194

CHARLES RIVER STREET

Approval under the Subdivision
Control Law not required.
Needham Planning Board:
Edmund L. Hogue
Thomas P. Dwyer
Sam W. Wainwright
Date: Sept 10, 1957

Note: Intermediate Highway monuments
on curve could not be found.

Plan of Land
in
NEEDHAM, MASS.
Scale: 1" = 60'. August 12, 1957.
Schofield Brothers Reg. Civil Engineers
48 Park Street, Framingham, Mass.
Offices in Framingham & Orleans, Mass.
Petitioners David and Nancy N. Wilder.

I certify that this actual survey was made
on the ground in accordance with Land Court
Instructions of 1950, between June 5, 1957
and June 7, 1957.
Date: August 28, 1957. Surveyor: *William R. Doney*

Note: Origin of Massachusetts Coordinate System established
from M.G.S. Station 28 A.Q. with azimuth to M.G.S. Station 29 A.B.
M.G.S. Station 28 A.Q. on the southerly side of Charles River Street,
opposite Grove Street: X = 657,954.61
Y = 463,056.22