

WOLOMOLOPOAG

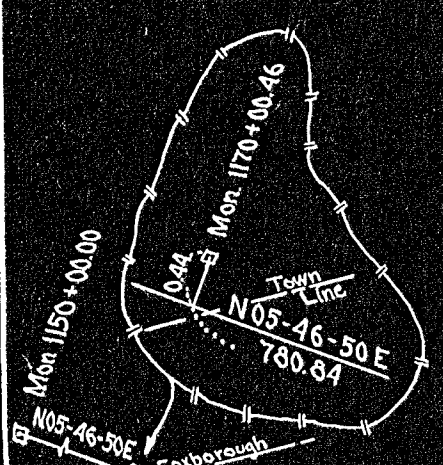
STREET (Variable width) Public

AREA = 5.107 ACRES

Benjamin T. Johnson

Benjamin T. Johnson

Daniel Carpeno



PLAN OF LAND  
IN  
SHARON, MASSACHUSETTS

Scale: 1" = 50'  
June 11, 1957  
Kenneth E. McIntyre - Reg. Civil Engineer &  
Reg. Land Surveyor - Walpole, Mass.

I certify that this plan was made from an actual survey on the ground in accordance with the Land Court requirements of 1950. *Kenneth E. McIntyre*

TOWN OF SHARON  
PLANNING BOARD APPROVAL  
APPROVAL NOT REQUIRED  
DATE *June 24, 1957*

SHARON PLANNING BOARD  
*Russell A. White*  
*Hyman A. Keck*  
*William H. Thompson*



27810<sup>A</sup>  
**MAY BE FILED**  
Sept. 1,  
Date 1957 By *L.S.*  
Norfolk Co. R 46