

SUBDIVISION OF LAND MILTON, MASS..

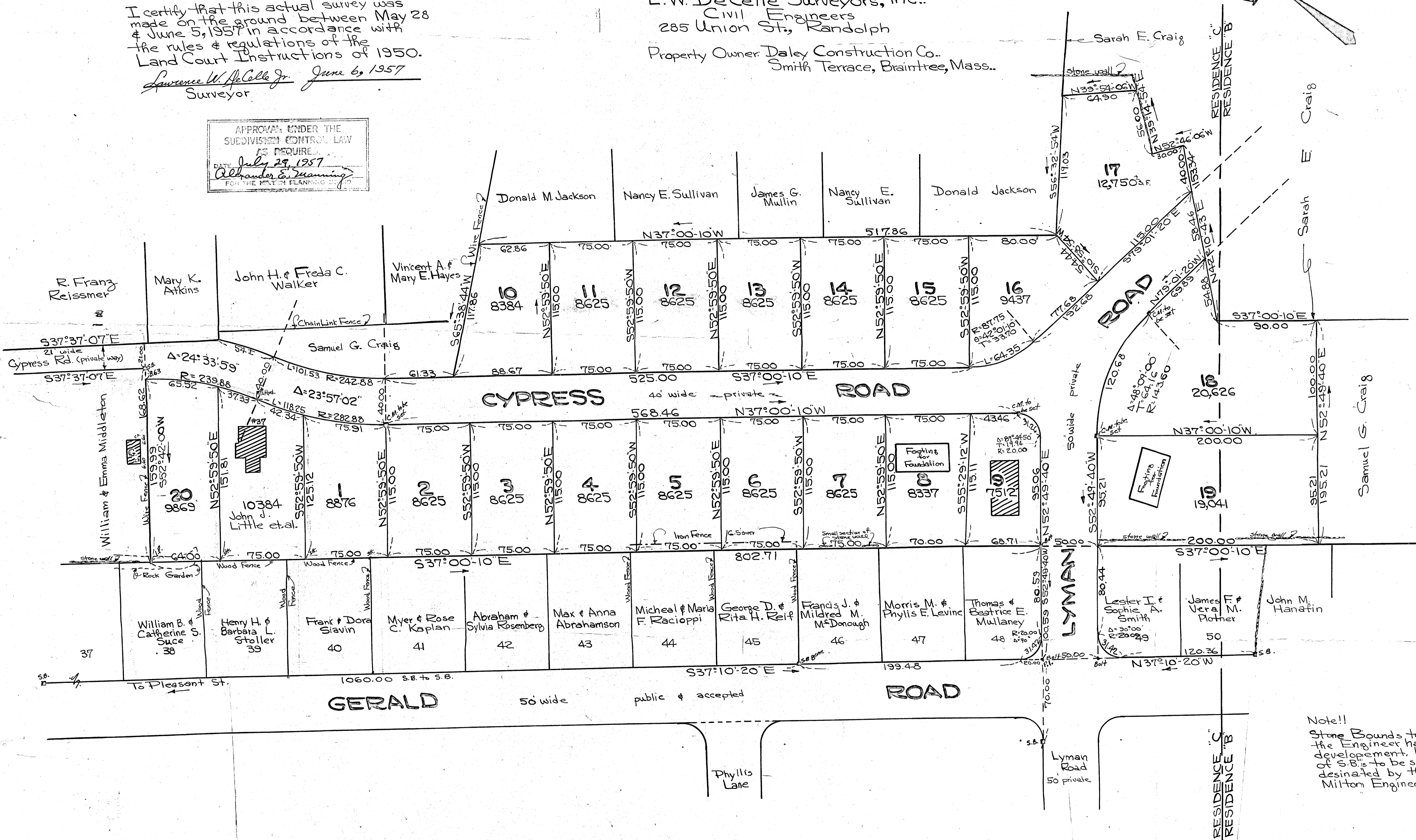
Scale 1"=40' June 6, 1957
L. W. DeCelle Surveyors, Inc.
Civil Engineers
285 Union St., Randolph

Property Owner: Daley Construction Co.
Smith Terrace, Braintree, Mass..

I certify that this actual survey was made on the ground between May 28 & June 5, 1957 in accordance with the rules & regulations of the Land Court Instructions of 1950.

Lawrence W. DeCelle Jr. June 6, 1957
Surveyor

APPROVED UNDER THE
SUBDIVISION CONTROL LAW
AS REQUIRED.
DATE July 29, 1957
Alfred E. Manning
FOR THE TOWN PLANNING BOARD



Note!!
Stone Bounds to be set by the Engineer handling the development. Location of S.B.'s to be set will be designated by the town of Milton Engineer.