

AREA: 114,924 ± s.f.

Approval under the Subdivision Control Law not required.  
Needham Planning Board:  
*Edward J. Rice*  
*Arthur P. Richardson*  
*Henry J. Perry*  
*Edward J. Boyle*  
*Ely W. W. Smith*  
Date: May 7, 1957

- References:  
1. Plan 405 of 1954, Book 2047, page 267.  
2. Plan 1161 of 1956, Book 3504, page 520.  
3. Plan 97 of 1957, Book 3539, page 535.

I certify that this actual survey was made on the ground in accordance with Land Court Instructions of 1950 between April 15, 1957 and April 25, 1957.

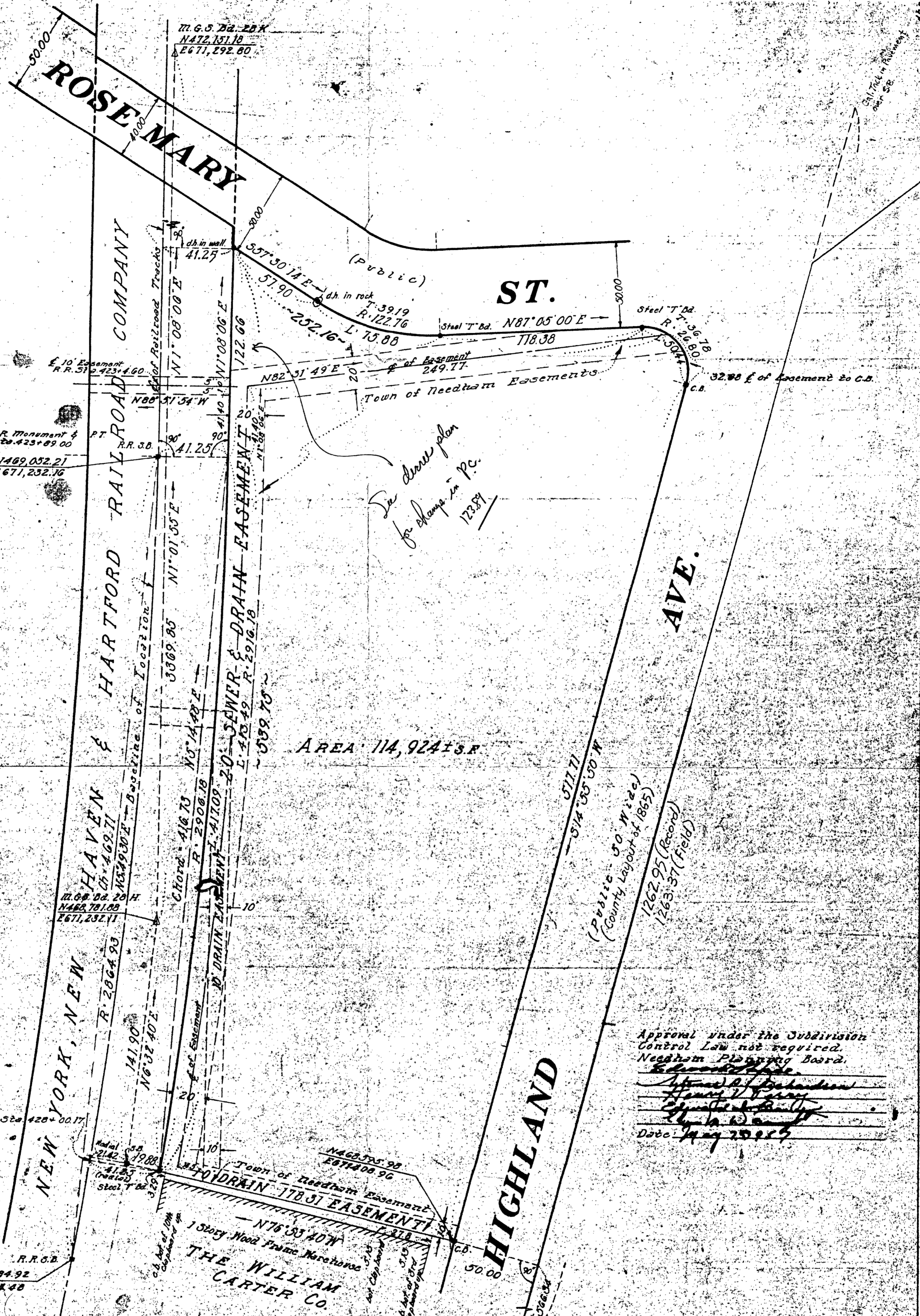
Date: Aug. 2, 1957 Surveyor: *Ema W. McKechnie*



Plan of Land  
in  
**NEEDHAM, MASS.**  
Scale: 1" = 40'. April 25, 1957.  
Schofield Brothers Registered Civil Engrs  
48 Park Street, Framingham, Massachusetts.  
Offices in Framingham & Orleans, Massachusetts.  
Property of Philnorsten Realty Corporation.  
Certified: August 2, 1957.



4659-C



AREA 114,924 ± s.R.

Approval under the Subdivision Control Law not required.  
Needham Planning Board.  
*[Signatures]*  
Date: May 20, 1957

- References**
- 1. Plan 405 of 1954, Book 2047, page 267
  - 2. Plan 1167 of 1956, Book 3504, page 520
  - 3. Plan 97 of 1957, Book 3539, page 335

I certify that this actual survey was made on the ground in accordance with Land Court Instructions of 1950 between April 13, 1957 and April 25, 1957.

Date: Aug. 2, 1957 Surveyor: *[Signature]*



**NEEDHAM, MASS.**  
Scale 1" = 40' April 25, 1957.  
Schofield Brothers Registered Civil Engineers  
48 Park Street, Framingham, Massachusetts  
Offices in Framingham & Orleans, Massachusetts  
Property of Philnorston Realty Corporation.  
Exp. Aug. 2, 1957.

4659-C